

the writer to the conclusion that either the confined specimens were not impregnated, or that they had already deposited all of their eggs, or that the breeding habits differ from those of the mosquitoes of the other genera mentioned.

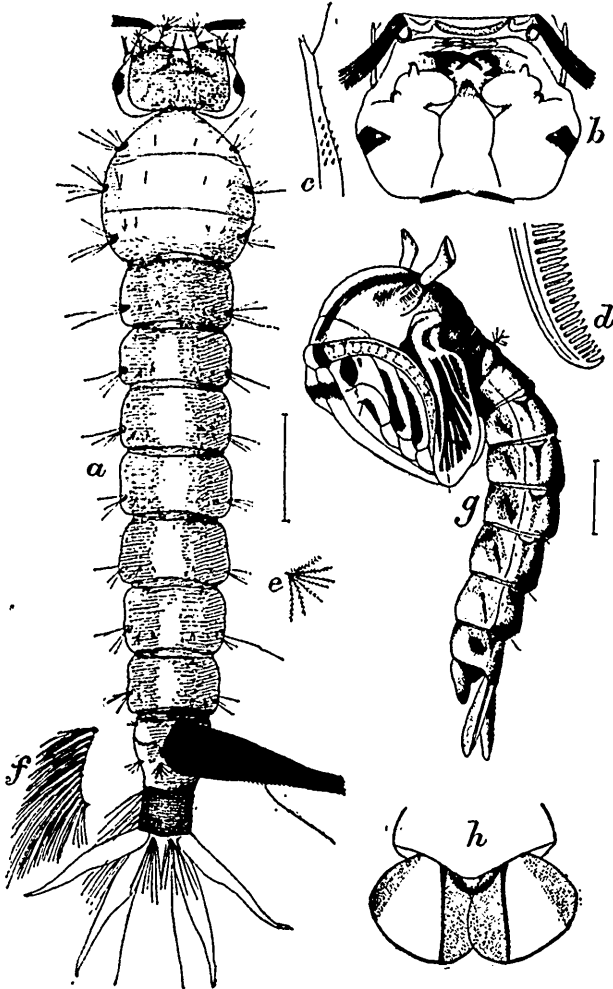


FIG. 31.—*Psorophora ciliata*: *a*, full-grown larva; *b*, head of same from below; *c*, antenna of same; *d*, a mandibular filament; *e*, tuft from penultimate segment of same; *f*, fringe from same; *g*, pupa; *h*, anal flaps of same. Enlarged (original).