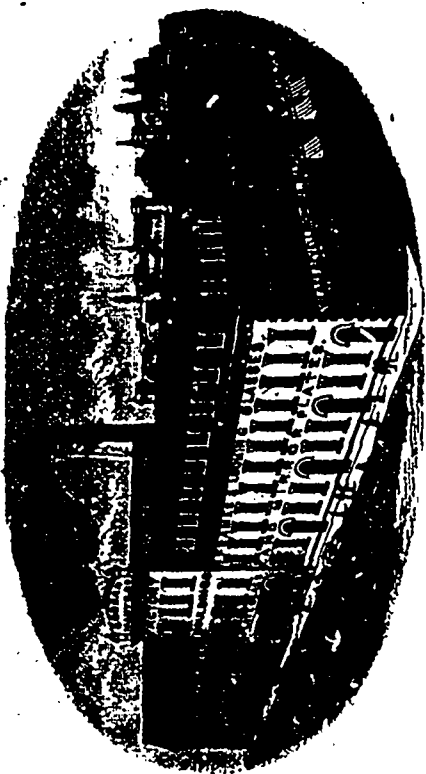


**Cobban Manufacturing Co'y** Factory & Head Office: Toronto.  
 Branch: 148 McGill Street, Montreal.

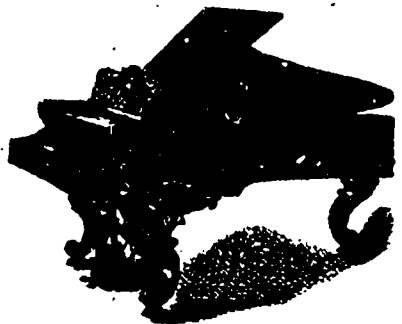


MANUFACTURERS OF  
 Mantles, Over Mantles and Mirrors in Finest Hardwoods. Mouldings, Picture  
 Frames and Looking Glasses. Mirror Plates: British, French, German,  
 Shocks. Plate Glass Beveling and Silvering a Specialty

**TORONTO.**  
**MONTREAL.**

**HEINTZMAN & CO.**

MANUFACTURERS OF



**GRAND,  
 SQUARE,  
 AND UPRIGHT  
 PIANOFORTES.**

SEND FOR ILLUSTRATED CATALOGUE.

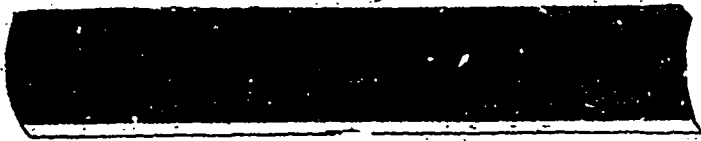
Warerooms, - 117 King St. West,  
**TORONTO.**

**GALT MACHINE KNIFE WORKS.**

PLANING MACHINE  
 KNIVES.



STAVE CUTTER KNIVES.



STAVE JOINTER KNIVES.

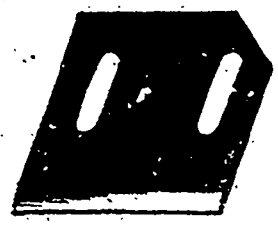


MOULDING, TENONING

MITREING

SHINGLE JOINTER,

And other irregular shapes.



Cheese-box and Veneer, Paper Cutting, Leather Splitting and any special knife made  
 to order. SEND FOR PRICE LIST. ALL WORK WARRANTED.

PETER HAY, - - - GALT, ONT.

THE  
**Polson Iron Works Co.**  
 (LIMITED)

CAPITAL, - - \$300,000.00.

**Iron & Steel Ship Builders & Engineers**

HEAD OFFICE, TORONTO.

PRESIDENT, WM. POLSON. MANAGING DIRECTOR, F. B. POLSON

DIRECTORS:

Hon. W. E. Sanford, W. C. Matthews, Jas. Worthington,  
 D. Graham, A. B. Lee, T. F. Chamberlain,  
 J. B. Miller, Thomas West.

BUILDERS OF

**Iron, Steel, Composite and Wooden SHIPS**

Compound and Triple Expansion

**MARINE ENGINES**

AND

**MARINE BOILERS**

Hoisting Engines, Pumping Engines, The Brown  
 Automatic Engines for Stationary Use.

STEAM BOILERS OF EVERY DESCRIPTION.

Ship Building Works and Dry Dock, OWEN SOUND, ONT.  
 Engine and Boiler Works, Esplanade St., TORONTO.