

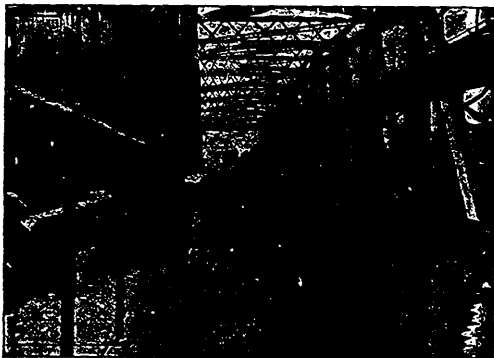


**AQUEDUCT BEING SWUNG ASIDE TO ALLOW VESSEL TO PASS ON SHIP CANAL BENEATH**

seen in the first illustration on this page in its ordinary position and a vessel passing through, is a gigantic structure, 235 feet long, 18 feet wide, the depth of the tank being six feet. The aqueduct covers two spans of ninety feet, and weighs when swinging 1,400 tons. It

is worked from a central pier, and moves upon a radius of sixty-four rollers.

In our final illustration the aqueduct is seen as it is being swung round to afford a clear way for the oncoming vessel in the ship canal.



**VESSEL IN AQUEDUCT OVER THE MANCHESTER SHIP CANAL.**