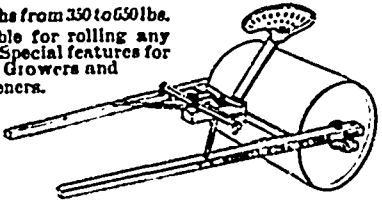


Weights from 350 to 650 lbs.
Suitable for rolling any
soil. Special features for
Fruit Growers and
Gardeners.



Manufactured only by
T. E. Bissell Company Ltd., Dept. N., Elera, Ont.

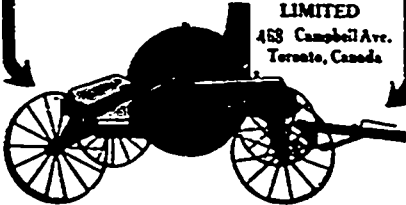
TRADE MARK
Wilkinson Climax B
REGISTERED

**Ensilage and
Straw Cutter**

Our "B" machine, built especially for
the farmer. A combination machine
— it will cut and deliver green corn
into the highest silo or dry straw or hay
into the mow. 12-inch throat, rolls
raise 6 inches and set close to knives—solid,
compact cutting surface. Can change cut with-
out stopping. Can be reversed instantly. Direct
pneumatic delivery. Kalle wheel carries fans.
No lodging, everything cut, wheel always in
balance. Steel fan case.

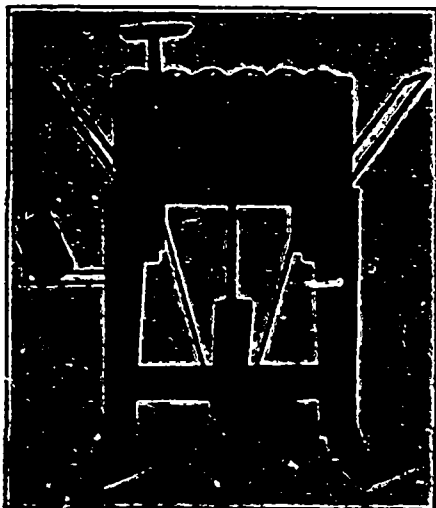
Made in two styles—mounted or unmounted. We
also make large type machine for custom work.
Ask your dealer about the well known machine
and write us for new catalog showing all styles.

**THE BATEMAN-WILKINSON CO.,
LIMITED**
458 Campbell Ave.
Toronto, Canada



Quick and Easy

That is the way the **DAISY APPLE
BOX PRESS** works. A simple pres-
sure of the foot brings the arms up over the ends
of the box, automatically draws them down and
holds them in place while being nailed. The
fastest and only automatic press on the market.



Pat. No. 104,535

If you pack apples in boxes, this machine
will be a great convenience to you and will
save you time and money. Write for price card

J. J. ROBLIN & SON
Manufacturers Brighton, Ontario

British Buying Methods Changed

For years Canadian apple shippers have complained against the system of buying and selling apples by auction that has been followed in Liverpool. During the past two years this system has been changed for the better largely through the efforts of Mr. I. N. Chute, European representative in England of the United Fruit Companies of Nova Scotia Ltd. At the recent annual meeting of the company the Board of Management referred to this change as follows:

In last year's report Mr. Chute explained in detail the system under which fruit was handled in this important market; he explained the operations of the various organizations, the Importers' Association, the Brokers' Association and the Buyers' Association. Strong protests have been made for generations by apple shippers from all parts of the world, especially concerning the operations of the Buyers' Association, who had the monopoly of the auction rooms and who persistently refused to allow any but members to buy in the rooms. Such protests, however, have always been in vain because there was no organization powerful enough to withhold supplies and thus compel recognition.

We are unable to go into details as to how it has been accomplished but have the satisfaction to be able to report to you today that any firm of good financial standing and clean business record can enter the auction room and bid for your apples, so that in future instead of a few men being able under certain conditions to fix the prices they will pay before the sale commences, your apples will be sold to the highest bidders drawn from all parts of the country, many of whom have previously had to pay the old Buyers' Association as high as fifty cents a barrel profit.

The fact that this extra competition means enhanced prices and prevents market rigging is of course apparent. In addition to this, none of your apples are now tolled by the Importers' Association, saving in that direction approximately twenty cents on every barrel.

We feel that this is the most important achievement of The United Fruit Companies of N. S. Ltd., and feel sure that all cooperators will share our satisfaction in the knowledge that it is by their concerted action alone that this sweeping reform has been brought about.

Australian Fruit Exports

Complete figures in regard to the exports of Australian fresh fruit for the 1914 season are not yet available. The subjoined table shows, approximately, the totals for the season, compared with 1913. The Hobart figures establish fresh records for Tasmania, which is the principle apple-growing state:

Tasmania to United Kingdom, 1913, 465, 103 cases; 1914, 766,203 cases. Tasmania to Germany, 1913, 17,275 cases; 1914, 72,175 cases. Tasmania to South America, 1913, 115,763 cases; 1914, 37,908 cases. Total for Tasmania, 1913, 598,141 cases; 1914, 876,186 cases.

Victoria to European ports, 1913, 580,154 cases; 1914, 352,055 cases. South Australia to European ports, 1913, 37,864 cases; 1914, 100,588 cases. Approximate total to May 7, 1914, 1913, 986,159; 1914, 1,328,822.

TO THE TRADE

KELWAY'S

OF LANGPORT, ENG.

RENOWNED PLANTS & SEEDS

As advertised, are offered at
SPECIAL RATES TO
CANADIAN NURSERYMEN.

NO AGENTS
NO BRANCH STORES

Our House is open to every legiti-
mate Nurseryman and Seedsman in
the Dominion. ASK FOR PRICES

**KELWAY & SON, THE HOUSE
OF QUALITY**
LANGPORT, ENGLAND.

MERRYWEATHER'S ROSES

are noted throughout the world

They are Cheap; they are True to
Name; the Trees are Strong and
Sturdy. They defy Competition.

ALL THE
NEWEST VARIETIES
Dwarfs, Standards, Climbers, also
Fruit Trees, Shrubs, Ornamental Trees

Send for Catalogue, Post Free

Henry Merryweather & Sons
SOUTHWELL, NOTTS., ENG. Ltd.

FREE LAND FOR THE SETTLER IN NEW ONTARIO

Millions of acres of virgin soil obtainable free and at a nominal cost are calling for cultivation.

Thousands of farmers have responded to the call of this fertile country and are being made comfortable and rich. Here, right at the door of Old Ontario, a home awaits you.

For full information as to terms, regulations, and settlers rates, write to

H. A. MACDONELL
Director of Colonization
Parliament Buildings, TORONTO
HON. JAS. S. DUFF
Minister of Agriculture
Parliament Bldgs., Toronto