

SEEDS THAT SATISFY

Bruce's Novelties for 1909

SEEDS THAT SATISFY

We offer some of the best of the new introductions, all of which we highly recommend. Our New Catalogue gives a further list of Novelties, and all the Standard Varieties in General Use.

NEW BEET, FIREBALL.—A grand extra early sort for sowing in frames and very desirable for sowing in the open. It is a perfect globe shape, with smooth skin, solid flesh of very sweet flavor, small leaf stalks, slender tap root, and of a bright intense red color. Pkt. 5c, oz. 15c, 2 oz. 25c, $\frac{1}{4}$ -lb. 40c, 1 lb. \$1.25 postpaid.

NEW RADISH, SPARKLER.—The best variety for summer planting, and equally good for forcing. The radishes have a bright scarlet body, with a well defined white tip, and are crisp and mild; growth is rapid, and tap root small. Pkt. 5c, oz. 15c, 2 oz. 25c, $\frac{1}{4}$ -lb. 40c, 1 lb. \$1.25 postpaid.

NEW SWEET CORN, GOLDEN JUSTICE.—A fine early, hardy, variety unequalled in flavor, sweetness, tenderness and other eating qualities. It has a rich creamy, yellow color, of most tempting appearance on the table. Pkt. 5c, pint 30c, quart 55c postpaid.

NEW PEA, VELOCITY.—A round blue pea, not so large or sweet as the wrinkled varieties, but very valuable on account of its extreme earliness, combines all the merits of the extra early varieties, but is fully 10 days earlier and of very uniform size which also adds to its value. Pkt. 10c, $\frac{1}{2}$ -pint 20c, pint 35c, quart 60c postpaid.

Send for our Handsomely Illustrated 100 page Catalogue of Vegetable, Farm and Flower Seeds, Plants, Bulbs, Poultry Supplies, Garden Implements, etc., for 1909. FREE.

NEW MIGNONETTE, WHITE PEARL.—A white flowered variety, of stocky, robust growth, producing in abundance, large, broad, conical heads of deliciously fragrant white flowers; splendid pot culture. Pkt. 10c.

NEW SALVIA SPLENDENS, FIREBALL.—The best of all salvias, flowering early and continuing till frost. It is a bushy plant, branching freely and blooms so profusely as to almost hide the foliage; the flowers are large, a fiery scarlet color, and the spikes are large and broad. Pkt. 15c.

NEW SWEET PEA, MRS. ROUTZAHN SPENCER.—Flowers very large, with blending shades of soft rose, buff and primrose and a decided rose edge, and of perfect form. Pkt. 15c.

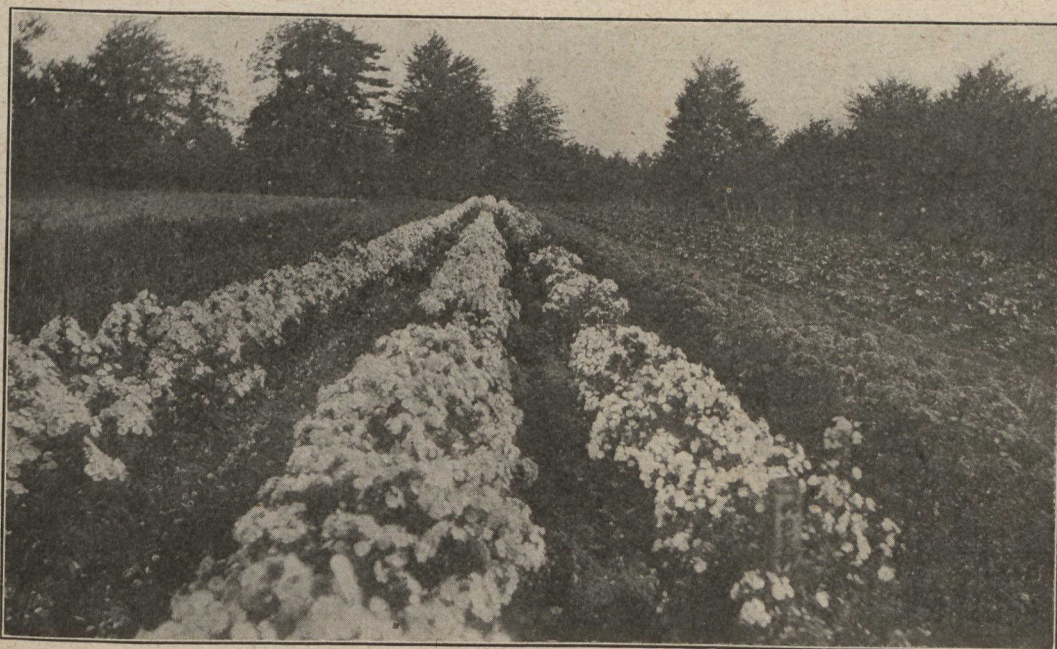
NEW SWEET PEA, ASTA OHN SPENCER.—Flowers very large and wavy, the stems long and steady, with four blossoms to the stem. The color is a beautiful lavender, suffused with mauve. Pkt. 15c.

NEW SWEET PEA, LOVELY SPENCER.—Flowers very large and a beautiful bright pink, shading lighter to the edges. Pkt. 15c.

NEW SWEET PEA, MRS. SANKEY SPENCER.—Flowers very large, a pure clear white, and of splendid form. Being black seeded it germinates strongly. Pkt. 15c.

John A. Bruce & Co.SEED MERCHANTS
ESTABLISHED 1850**Hamilton, Ont.****THE FONTHILL NURSERIES**

OLDEST and LARGEST in CANADA—ESTABLISHED 1837—Over 850 ACRES



Block of HARDY PHLOX, Showing Saleable Plants for Spring 1909.

SEND FOR OUR
"PEERLESS" COLLECTION
OF
HARDY PHLOXES

All the newest and improved varieties from pure white to the deepest dark maroon. Immense panicles of flowers from June till frost.

Easy to Grow and
Perfectly Hardy

Send for List of Named Kinds
and Price

OLEANDERS

For indoor culture, and suitable for lawn decoration in summer in pots or tubs.

New Varieties and Colors
in Rose, White and Yellow

RUBBER PLANTS

Nothing more beautiful for interior decoration than the large waxy leaves of the Rubber Plant.

We offer strong thrifty plants for Pot Culture.

STONE & WELLINGTON, TORONTO, ONT.