

TO INVESTORS

We have recently opened a Bond Department at Toronto, through which we shall be glad to arrange the purchase or sale of Victory or any other bonds for our customers.

THE CANADIAN BANK OF COMMERCE

PAID-UP CAPITAL \$15,000,000
RESERVE FUND \$15,000,000
CAMPBELLTON, L. R. R. A. H. Russell, Manager.

CENTRAL LIVERY STABLE

Opposite Central Book Store, Water Street.

Hacks meet trains night and day.

Double Hack for Weddings,
Driving Parties, etc.

DUNCAN CHAMBERLAIN, Proprietor,
Phone 426.

Groceries

A Choice Line of Staple and Fancy Groceries Always on Hand.

Oats, Flour, Hay and Feed. Also a
Full Line of Fresh and Salt Meats.

PRICES RIGHT.

Thos. Ellsworth, Corner O'Leary and
Roseberry Streets
PHONE 322.

COMMUNITY CABINETS

FOR

WEDDING GIFTS.

Community Silver Plated
KNIVES, FORKS, & SPOONS

In Four Patterns

Patrician
Sheraton
Exeter
Primrose.

H. R. Humphrey

Jeweler & Optician

CAMPBELLTON, N. B.

That Your Home May Echo
With Quaint Carols of
Peace and Good Will
at Christmas-Tide.

The thrill of joy, the marvelous inspiration, the tremendous up-lift of hearing carols sung as sweetly, as perfectly and naturally as if the singers stood before you in the flesh; of hearing hand and orchestra music as well in every way as if the musicians were right beside you, await you now, for you are at liberty to order

The NEW EDISON—"The Phonograph with a Soul"

and have it placed at once in your home. And the payments needn't worry you, for the Edison BUDGET PLAN makes them so easy that you'll wonder why you had not come for your New Edison long ago.

ASK YOUR NEAREST EDISON DEALER ABOUT THE BUDGET PLAN.

W. H. THORNE & CO., Ltd., Distributors - St. John N. B.

The Graphic.

H. B. ANSLAW, MANAGER

Subscription, \$2.00
To the United States \$2.50
Strictly in Advance.
If not paid in advance, \$2.50 per year.

The Graphic is on sale at the following places:

A. McE. McDonald, Water St.
Thos. Wran's Drug Store, Water St.
Central Book Store, Water St.
White's Drug Store, Gerrard St.

DAIHOUSSIE

The Dalhousie Mercantile Company.

The Clifford Pharmacy.

Sheehy Music Store.

FERGUSON MANOR

A. I. Macquill, Postmaster.

ADVERTISING RATES.

The rates for Transient Advertising in The Campbellton Graphic, effective June 1st, 1920 are as follows:

Per inch, first insertion.....80c.

Per inch, second insertion.....40c.

Local Reader advs. 15c per line

each insertion. Minimum charges 50c.

Card of Thanks, Notices of Engagements, Births, Marriages and Deaths 60c.

Poetry with Death or Memorial Notices, 10 cents per line extra.

General mercantile display rates on application.

Campbellton, N. B., Nov. 25th, 1920

THE LESSON OF THE TIMES.

Increased wages obtained by labor were based on higher prices paid by the public. With prices forced down by public sentiment, a new condition will obtain bearing down upon the wage scale. A standard of living for labor higher than that of before the war is desirable. To maintain it in the face of falling prices, requires bigger production. To make industry profitable in time of low prices there must be bigger sales. Production must pursue the retreating consumer. These facts admit of no dodging. Now is the time for spirited acceptance of the lesson they teach. Ignoring them will lead to disillusionment as soon as economic laws operate. If labor has learned to live more comfortably, the new advantages it has earned are worth keeping.—Montreal Star.

THE DOWNWARD TREND.

Further downward movements in prices are shown by the monthly report prepared for publication in the October Labour Gazette by the Cost of Living Branch of the Labour Department. This report shows that the retail prices of foods averaged lower during October than in the previous month, the decreases being particularly marked in sugar and potatoes. Smaller decreases were reported in the price of beef, bread, flour and rolled oats. There were advances in prices of hog products, eggs, milk and in coal. The weekly good budget averaged \$15.83 in sixty Canadian cities at the middle of October, as compared with \$15.95 in the middle of September, \$14.21 in October 1919, and \$7.93 in October 1914.

According to the report, substantial decreases occurred during the month of October in the prices of grain, cattle, sheep, butter, vegetables, cereals, sugar, cotton, hides, some lines of metals and lumber, linseed oil, turpentine, chemicals, raw rubber and laundry starch.—Ex.

The British Food Ministry is looking to the abundant harvests in Canada, Australia and India to enable it in the early spring to wipe out the broad subsidy and substantially reduce prices.

The funeral of the late Senator W. L. Stafford was held in Vancouver yesterday afternoon. All public bodies were represented at the funeral and floral tributes were sent by the members of the House of Commons and Senate.

A Kidney Remedy

Kidney troubles are frequently caused by badly digested food which overtaxes these organs to eliminate the irritant acids formed. Help your stomach to properly digest the food by taking 15 to 30 drops of Extract of Roots, sold as Mother Seigel's Carative Syrup, and your kidney disorder will promptly disappear. Get the genuine.

Parting Hour Waltz, Rosa Cyr.

La Coquette, Emma Shannon.

Queen of the Fairies, Nelly Kerr.

Viola Duet—Tris Waltz—Marion Nadeau, Jeanne Lachance, Troy.

Nadeau, Jeanne Lachance, Troy.

Kerr, Maria Nadeau, Troy.

Chanson du Sol, Marion Harquail.

Broken Promises, Ida Savidant.

American March, Gertrude Cormier.

Sous Bois, Louise Polier.

Vocal Duet—"Ma Photographie"—Maria Nadeau, Troy.

Piano Duet—"No Surrender"—Gertrude Titus and Louise Polier.

God Save the King.

CHURCH SOCIAL.

The members and adherents of the Methodist Church enjoyed a pleasant social evening in the Sunday School Hall last evening. A short programme was rendered and refreshments served.

CONCERT AT DALHOUSIE JCT. A GREAT SUCCESS.

A very successful concert was held in the temperance hall at Dalhousie Junction Wednesday, Nov. 17th. The attendance was large in spite of the very unfavorable weather. Both children and grown-ups carried out their parts well, which showed the efficient work of their trainers. The Junction people were proud of the concert which went to prove what could be done in a country district where the work is so up-hill.

Several who attended the concert found it the best they had ever seen. The proceeds went to procuring some necessities for the school. The following programme was carried out:

Address—Mr. J. Jamieson.

Chorus—School Children.

Recitation—Washing Babies—Florine Hamilton.

Tableau—"She Loves Me"—"She Loves Me Not"—Lloyd Hicks.

Solo—Keitha Atkinson.

Reading—Mildred MacCurdie.

Intermission.

Dialogue—"Little Visitors"—School Children.

Recitation—"The High Cost of Living"—By Ernest Hicks.

Flag Drill—School Boys.

Recitation—"When the Teacher Came to Tea"—By Randolph Hicks.

Comic Solo—Uncle Joe.

Recitation—"Tiny Tot"—Chester Roberts.

Intermission.

Dialogue—"Out of the Sangle."

Reading—"A Yankee in Love."

Tableau—"Rock of Ages"—Annie Hicks.

Recitation—"The Dying Soldier"—By Keitha Atkinson.

Address and Recitation—"The Face on the Floor"—Mr. A. Langies.

Good Night—Chorus—School Children.

God Save the King.

A MUSICAL TREAT.

A very interesting evening was spent by the music pupils of the Hotel Dieu on the Feast of St. Cecilia—the patroness of Musicians. A program compared mainly of selections which the pupils had learned since the reopening of classes in September, was carried out very successfully, and was listened to with wrapt attention by the friends of the performers. All expressed themselves agreeably surprised at the excellence of the work done in so short a time.

Here and there between the instrumental selections a few voluntary vocal and recitative contributions were made by the pupils.

The programme was as follows:

Piano Duet—Sleigh Bell Chimes—Gertrude Cormier and Rosa Cyr.

Vocal Chorus—Homage to St. Cecilia—The Class.

Violin Duet—Home Sweet Home—Clair, Allard, accom. by Helena Allard.

Vocal Solo—"There Little Girl Don't Cry"—Anastasia Arsenault.

Piano Solos.

Wild Rose Polka—Helena Allard.

Robin Red Breast—Stella Plourde.

Tulip Polka Mazurka—Anastasia Arsenault.

Frappe Waltz, Lea Comeau.

Chicago March, Sarah Imhoff.

Vocal Selection—"Foolish Little Maiden"—Sarah Imhoff.

Violin Solo—Twilight Idyl—Marion Nadeau.

Piano Solos.

Military March, Corinne St. Onge.

Thine Own Waltz, Jean Gilker.

Blue Rose Waltz, Angelina Loudon.

Durand 2nd Waltz, Gertrude Titus.

Piano Duet—Taps—Ida Savidant and Nelly Kerr.

Violin Solo—Crimson Blushes—Jeanne Lachance.

Vocal Solo—"Million Miles from Nowhere"—Jean Gilker.

Piano Solos.

Parting Hour Waltz, Rosa Cyr.

La Coquette, Emma Shannon.

Queen of the Fairies, Nelly Kerr.

Viola Duet—Tris Waltz—Marion Nadeau, Jeanne Lachance, Troy.

Nadeau, Jeanne Lachance, Troy.

Kerr, Maria Nadeau, Troy.

Chanson du Sol, Marion Harquail.

Broken Promises, Ida Savidant.

American March, Gertrude Cormier.

Sous Bois, Louise Polier.

Vocal Duet—"Ma Photographie"—Maria Nadeau, Troy.

Piano Duet—"No Surrender"—Gertrude Titus and Louise Polier.

God Save the King.

CHURCH SOCIAL.

The members and adherents of the Methodist Church enjoyed a pleasant social evening in the Sunday School Hall last evening. A short programme was rendered and refreshments served.

HOLIDAY GOODS

We expect to have our complete line of Toys and Fancy Articles, suitable for gifts on display Monday the 22nd inst.

To arrive per S. S. Megantic direct from Belfast, Ireland; a large importation of lines in Centres, Squares, Napkins, Doilies, Handkerchiefs, Etc.

Dainty Novelty Handkerchiefs Embroidered corners in pretty Floral and Spray Designs in all white Maderia effects with scallop and embroidered corner also pure Irish Linen.

CAPS & SCARFS.

4 sets of Travellers' Samples to clear at wholesale prices.

Geo. G. McKenzie Co., Ltd.

PHONES 267 and 406.

SWEATERS

All wool pullover Sweaters for Ladies, Misses, and Infants. In new shades, including Turquoise, American Beauty, Strawberry, Cardinal and Buff.

Kiddies Wool Overalls in White, Grey and Cardinal, exactly right to wear in cold weather. They will really go well with Sweaters, Pullovers and Coats.

WOOL.

All shades in Monarch Down and Floss, Shetland Floss, Saxony, Fingering, Teazle, and Zephy Wool.

HOSIERY.

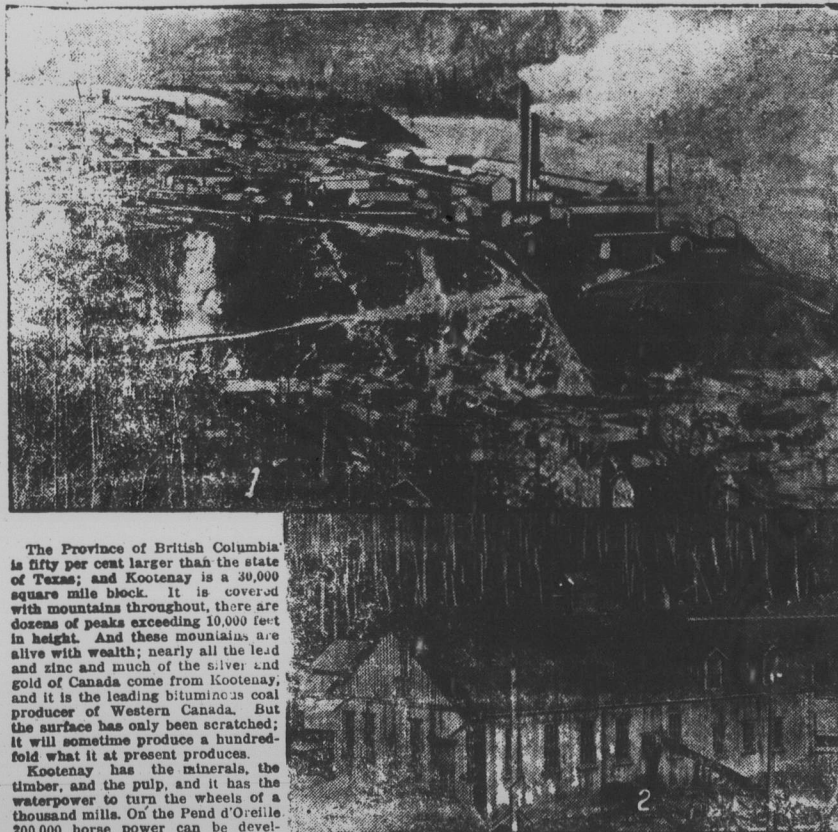
Ladies' Heather Mixture, wide ribbed and plain prices \$1.50 to \$3.00 per pair.

PHONE 63.

M. P. MOORES

Campbellton, N. B.

A Great Canadian Mining Region



The Province of British Columbia is fifty per cent larger than the state of Texas; and Kootenay is a 30,000 square mile block. It is covered with mountains throughout, there are ranges of peaks exceeding 10,000 feet in height. And these mountains are alive with wealth; nearly all the lead and zinc and much of the silver and gold of Canada come from Kootenay, and it is the leading bituminous coal producer of Western Canada. But the surface has only been scratched; it will sometime produce a hundred-fold what it at present produces.

Kootenay has the minerals, the timber, and the pulp, and it has the waterpower to turn the wheels of a thousand mills. On the Pend d'Oreille 200,000 horse power can be developed, and on the lower Kootenay 100,000 horse power, with half a million more scattered throughout the district. Many mountain streams are power generators.

The district is well supplied with railroads. The main line of the Canadian Pacific crosses the north part of the Kootenay and the Crow's Nest line of the same railway crosses the southern part. The Lake Windermere branch, running north and south through the beautiful Windermere region, connects two lines in the Kootenay and the Crow's Nest line. The main line of the Crow's Nest line at Grand Forks, Trail, Nelson and Fernie; a branch of the Crow's Nest line runs from Fernie to the border to Spokane.

The leading industries of Kootenay are lumbering, mining and fruit raising. At present other lines of industry are in their infancy.

Enough of the total area is covered with forest. The question of wood-pulp is intimately associated with the lumber industry.

The demand for pulp and the scarcity of paper are felt in Canada and elsewhere. Canada has 22 pulp mills, but there is not a mill between the west coast of British Columbia and the Rocky River, a distance of over 1,000 miles.

For the purpose of mining, Kootenay is divided into two distinct parts: the coal mining field and the metal mining field. The coal measures are limited to the extreme eastern part of the district and there are no metals there. The rest of the district is rich in metals but has no coal.

There are three known bituminous coal areas in Canada, two of them on islands at the extremities of the country, Cape Breton Island at the eastern end of the country and Vancouver Island at the western end and the shores of the lakes are rich in metals; not 2,000 square miles out of the 30,000 can ever be brought beneath the plow.

Agriculture takes a secondary position in the Kootenay. Only along the river and the shores of the lakes are cultivatable; not 2,000 square miles out of the 30,000 can ever be brought beneath the plow.

At the present nearly all of the cultivated land is devoted to fruit raising, and thousands of fruit—apples, pears, plums, cherries, and strawberries—are shipped from the neighborhood of Nelson, Creston and Grand Forks to the prairie provinces.

The Kootenay is a sportsman's paradise. All the streams of that region team with mountain trout and the mountains are alive with four-footed game. The district is famed for its big game; the mountains are full of deer, mountain goats, black bear, and smaller game of many sorts. Big game and prairie bear frequent the mountain tops and the upper reaches of the Elk Valley.

(1) Trail Smelter, B.C.

(2) One of the Mine Buildings at Fernie, B.C.

At Trail the Consolidated Mining and Smelting Company possesses the necessary facilities for reducing lead, zinc, copper, and gold, and its Sullivan mine at Kimberley is the greatest zinc producer in the Dominion. Practically all the lead and zinc produced in Canada come from the Kootenay. The district also possesses rich deposits of fluorite and manganese.

The Kootenay is a sportsman's paradise. All the streams of that region team with mountain trout and the mountains are alive with four-footed game. The district is famed for its big game; the mountains are full of deer, mountain goats, black bear, and smaller game of many sorts. Big game and prairie bear frequent the mountain tops and the upper reaches of the Elk Valley.

At the present nearly all of the cultivated land is devoted to fruit raising, and thousands of fruit—apples, pears, plums, cherries, and strawberries—are shipped from the neighborhood of Nelson, Creston and Grand Forks to the prairie provinces.

The Kootenay is a sportsman's paradise. All the streams of that region team with mountain trout and the mountains are alive with four-footed game. The district is famed for its big game; the mountains are full of deer, mountain goats, black bear, and smaller game of many sorts. Big game and prairie bear frequent the mountain tops and the upper reaches of the Elk Valley.

At the present nearly all of the cultivated land is devoted to fruit raising, and thousands of fruit—apples, pears, plums, cherries, and strawberries—are shipped from the neighborhood of Nelson, Creston and Grand Forks to the prairie provinces.

The Kootenay is a sportsman's paradise. All the streams of that region team with mountain trout and the mountains are alive with four-footed game. The district is famed for its big game; the mountains are full of deer, mountain goats, black bear, and smaller game of many sorts. Big game and prairie bear frequent the mountain tops and the upper reaches of the Elk Valley.

At the present nearly all of the cultivated land is devoted to fruit raising, and thousands of fruit—apples, pears, plums, cherries, and strawberries—are shipped from the neighborhood of Nelson, Creston and Grand Forks to the prairie provinces.

The Kootenay is a sportsman's paradise. All the streams of that region team with mountain trout and the mountains are alive with four-footed game. The district is famed for its big game; the mountains are full of deer, mountain goats, black bear, and smaller game of many sorts. Big game and prairie bear frequent the mountain tops and the upper reaches of the Elk Valley.

At the present nearly all of the cultivated land is devoted to fruit raising, and thousands of fruit—apples, pears, plums, cherries, and strawberries—are shipped from the neighborhood of Nelson, Creston and Grand Forks to the prairie provinces.

The Kootenay is a sportsman's paradise. All the streams of that region team with mountain trout and the mountains are alive with four-footed game. The district is famed for its big game; the mountains are full of deer, mountain goats, black bear, and smaller game of many sorts. Big game and prairie bear frequent the mountain tops and the upper reaches of the Elk Valley.

At the present nearly all of the cultivated land is devoted to fruit raising, and thousands of fruit—apples, pears, plums, cherries, and strawberries—are shipped from the neighborhood of Nelson, Creston and Grand Forks to the prairie provinces.

The Kootenay is a sportsman's paradise. All the streams of that region team with mountain trout and the mountains are alive with four-footed game. The district is famed for its big game; the mountains are full of deer, mountain goats, black bear, and smaller game of many sorts. Big game and prairie bear frequent the mountain tops and the upper reaches of the Elk Valley.

At the present nearly all of the cultivated land is devoted to fruit raising, and thousands of fruit—apples, pears, plums, cherries, and strawberries—are shipped from the neighborhood of Nelson, Creston and Grand Forks to the prairie provinces.

The Kootenay is a sportsman's paradise. All the streams of that region team with mountain trout and the mountains are alive with four-footed game. The district is famed for its big game; the mountains are full of deer, mountain goats, black bear, and smaller game of many sorts. Big game and prairie bear frequent the mountain tops and the upper reaches of the Elk Valley.

At the present nearly all of the cultivated land is devoted to fruit raising, and thousands of fruit—apples, pears, plums, cherries, and strawberries—are shipped from the neighborhood of Nelson, Creston and Grand Forks to the prairie provinces.

The Kootenay is a sportsman's paradise. All the streams of that region team with mountain trout and the mountains are alive with four-footed game. The district is famed for its big game; the mountains are full of deer, mountain goats, black bear, and smaller game of many sorts. Big game and prairie bear frequent the mountain tops and the upper reaches of the Elk Valley.

At the present nearly all of the cultivated land is devoted to fruit raising, and thousands of fruit—apples, pears, plums, cherries, and strawberries—are shipped from the neighborhood of Nelson, Creston and Grand Forks to the prairie provinces.

The Kootenay is a sportsman's paradise. All the streams of that region team with mountain trout and the mountains are alive with four-footed game. The district is famed for its big game; the mountains are full of deer, mountain goats, black bear, and smaller game of many sorts. Big game and prairie bear frequent the mountain tops and the upper reaches of the Elk Valley.

At the present nearly all of the cultivated land is devoted to fruit raising, and thousands of fruit—apples, pears, plums, cherries, and strawberries—are shipped from the neighborhood of Nelson, Creston and Grand Forks to the prairie provinces.

The Kootenay is a sportsman's paradise. All the streams of that region team with mountain trout and the mountains are alive with four-footed game. The district is famed for its big game; the mountains are full of deer, mountain goats, black bear, and smaller game of many sorts. Big game and prairie bear frequent the mountain tops and the upper reaches of the Elk Valley.

At the present nearly all of the cultivated land is devoted to fruit raising, and thousands of fruit—apples, pears, plums, cherries, and strawberries—are shipped from the neighborhood of Nelson, Creston and Grand Forks to the prairie provinces.

The Kootenay is a sportsman's paradise. All the streams of that region team with mountain trout and the mountains are alive with four-footed game. The district is famed for its big game; the mountains are full of deer, mountain goats, black bear, and smaller game of many sorts. Big game and prairie bear frequent the mountain tops and the upper reaches of the Elk Valley.

At the present nearly all of the cultivated land is devoted to fruit raising, and thousands of fruit—apples, pears, plums, cherries, and strawberries—are shipped from the neighborhood of Nelson, Creston and Grand Forks to the prairie provinces.

The Kootenay is a sportsman's paradise. All the streams of that region team with mountain trout and the mountains are alive with four-footed game. The district is famed for its big game; the mountains are full of deer, mountain goats, black bear, and smaller game of many sorts. Big game and prairie bear frequent the mountain tops and the upper reaches of the Elk Valley.

At the present nearly all of the cultivated land is devoted to fruit raising, and thousands of fruit—apples, pears, plums, cherries, and strawberries—are shipped from the neighborhood of Nelson, Creston and Grand Forks to the prairie provinces.

The Kootenay is a sportsman's paradise. All the streams of that region team with mountain trout and the mountains are alive with four-footed game. The district is famed for its big game; the mountains are full of deer, mountain goats, black bear, and smaller game of many sorts. Big game and prairie bear frequent the mountain tops and the upper reaches of the Elk Valley.