

Just as Important as Fuel

IMPERIAL Lubricants

For gasoline-burning engines—automobiles, tractors, trucks.

**IMPERIAL POLARINE AND
IMPERIAL POLARINE HEAVY**

For motors requiring an unusually heavy oil.

IMPERIAL POLARINE A

For kerosene-burning stationary engines and tractors.

**IMPERIAL POLARINE KEROSENE
TRACTOR OIL AND IMPERIAL
POLARINE KEROSENE TRACTOR
OIL, EXTRA HEAVY**

For open bearings of separators, binders, etc.

**IMPERIAL PRAIRIE HARVESTER OIL
LIGHT**

**IMPERIAL PRAIRIE HARVESTER OIL
HEAVY**

For worn and loose bearings—a thick oil.

**IMPERIAL ELDERADO CASTOR
MACHINE OIL**

For steam cylinder lubrication—tractors and stationary engines.

IMPERIAL CAPITOL CYLINDER OIL

For stationary and portable engines using either kerosene or gasoline.

**IMPERIAL STANDARD GAS ENGINE
OIL**

For grease cup lubrication—a clean solidified oil.

IMPERIAL ARCTIC CUP GREASE

Made in different consistencies.

Imperial Farm Lubricants are sold in 1 and 4 gallon sealed cans, half-barrels and barrels.

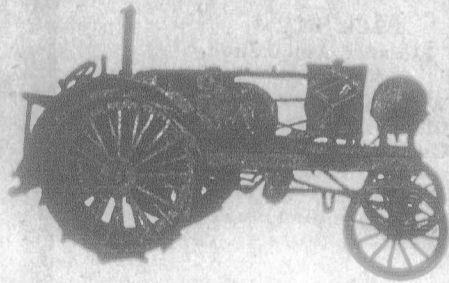
A PROPER supply of lubricating oil, of correct body and composition, is just as important as good fuel. No single oil or grease will properly meet the varying needs of all the different and costly machines of the modern farmer.

Recognizing the vital importance of correct lubrication for each machine, we have developed a line of carefully formulated Imperial Farm Lubricants. Each has been tested under actual service conditions. They are recommended by the leading manufacturers of tractors, automobiles and other farm machinery.

To make sure you are giving your automobile and tractor the most suitable lubrication, consult the Imperial Charts of Recommendations—displayed wherever Imperial Lubricants are sold. If in doubt, ask the Imperial Oil Man; or write to any of our branches.

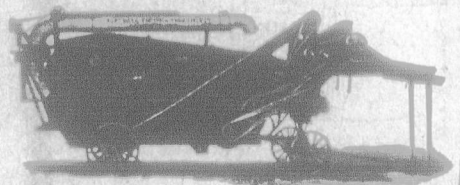
IMPERIAL OIL LIMITED
Power - Heat - Light - Lubrication
Branches in all Cities

Tractors and Threshers



WATERLOO BOY

The Simplest, most Accessible, most Powerful 3-plow Tractor on the market. Suitable for hauling 3 plows, Threshing, Silo Filling and General Farm Work.



Individual Farmers' Threshers, suitable size to be driven by small Tractors and Gasoline Engines. Do your own Threshing. Keep your farm clean and save expense. Write for free catalogue, prices and any information wanted.

THE ROBT. BELL ENGINE & THRESHER COMPANY, LIMITED, Seaford, Ont.
Also Steam Tractors and large size Threshers.

PATENT SOLICITORS—Fetherstonhaugh & Co. The old-established firm. Patent everywhere. Head Office: Royal Bank Buildings, Toronto. Ottawa Office: 5 Elgin Street. Offices throughout Canada. Booklet free.

Opportunities in the Veterinary Profession

If you desire to enter a profession you should consider what the new field of Veterinary Science has to offer. Graduates have splendid opportunities for a successful career. You should inquire.

SESSION BEGINS OCTOBER 1st, 1920.

Write for Bulletin and Calendar to
C. D. MCGILVARY, M.D.V., Principal,

Dept. D, Ontario Veterinary College
Toronto, Ontario

Affiliated with
University of Toronto

Under the Ontario
Dept. of Agriculture

NORTHERN ONTARIO

A vast new and of promise land freedom now open for settlement to returned soldiers and sailors FREE; to others, 18 years and over, 50 cents per acre. Thousands of farmers have responded to the call of this fertile country, and are being made comfortable and rich. Here, right at the door of Old Ontario, a home awaits you. For full particulars as to terms, regulations, and settlers' rates, write

H. A. MADONNELL,
Director of Colonization,

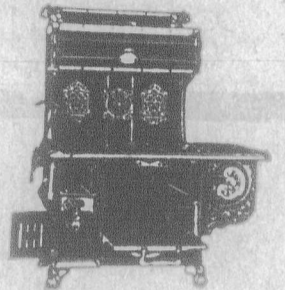
HON. MANNING DOHERTY,
Minister of Agriculture,
PARLIAMENT BUILDINGS, TORONTO

Corona Steel Range

Handiest Grates

AVOID the exasperating expense of grates going wrong by using the Corona Range. Not only are the Corona grates different in shape from the old-fashioned sort, but they are built for long life, being heavier. And you can change them in a minute. Instead of sliding in and out like the old-timers do, you simply release a plate and lift the grates from their position in a jiffy. That's handy enough for anybody surely! No fuss and expense having a mechanic to take them out. How handy for changing from coal to wood, too.

Certainly you should know all about this handiest of handy ranges with its fuel-saving and easy management features. See the Corona at the dealers and write us directly for free literature.



Tudhope-Anderson Co., Ltd.
ORILLIA ONTARIO

Western Distributing Houses: Winnipeg, Regina, Saskatoon, Calgary, Edmonton. Eastern Distributing Houses: London, Ont.; Smiths Falls, Ont.; J. Clarke & Son, Ltd., Fredericton, N.B.; Lounsbury Co., Ltd., New Castle, N.B.

35

DEMONSTRATED FREE ON YOUR FARM FREE

The Most Popular Engine in Canada. Time is money on the farm to-day. Be a modern farmer! Get a Gilson Engine. It will save you many a time-killing, back-breaking job. Get chores done quickly. Give you more time for money-making work in the field.

Sold Direct to You—Easy Payments. Gilson Engines are the standard for economy and dependability. A size for your needs. Our Easy Payment Plan makes the Gilson pay for itself while it works for you. Get the full facts—write to-day for catalogue, price and Easy Payment Plan.

GILSON Mfg. Co., Ltd.
1119 York Street
GUELPH, ONT.



GILSON ENGINES SEND FOR CATALOGUE

HYLO SILO

Sweet Fresh Ensilage down to the last forkful

THE HYLO SILO is perfectly air-tight. No frozen or spoiled ensilage around the walls. Convenient and perfect fitting doors, adjustable without hammer or wrench. Made of Guaranteed Long Leaf Yellow Pine. Built to last a life-time. Stands rigid when empty.

Write for prices and catalogue. AGENTS WANTED.
Gilson Mfg. Co. Ltd. 49 York St. Guelph (a)



Steel Rails

For Reinforcing Bridges and Barn Driveways.

Cut any Length
JNO. J. GARTSHORE
58 Front Street West, Toronto