

Issued Each Week—Only One Dollar A Year

VOL. XXX.

NUMBER 52.

Index

11 Dec
Subscription

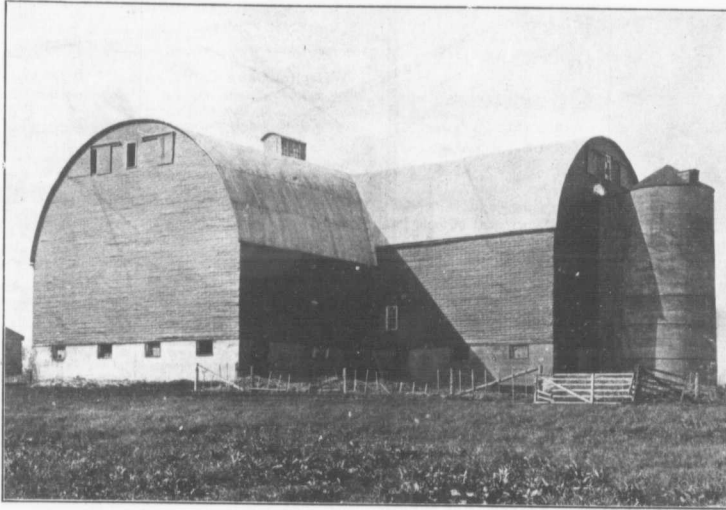
FARM AND DAIRY

RURAL HOME

PETERBORO, ONT.

DECEMBER 28

1911.



THE MANUFACTURING PLANT ON A WELL-MANAGED ONTARIO DAIRY FARM

The farmer who sells the hay, grain and other raw products produced on his farm is neglecting the most profitable department of the well-managed farm.—the manufacturing end of the business. The progressive farmer is a manufacturer. He turns the raw materials that he grows in the fields into such manufactured products as milk, pork, beef and live stock. Hence he realizes two profits instead of one on his farming operations. The building here illustrated is the manufacturing establishment on the dairy farm of S. A. Freeman, Oxford Co., Ont. Mr. Freeman milks over 70 cows, and considers the manufacturing of feed into milk the most profitable end of dairy farming.

DEVOTED TO
BETTER FARMING AND
CANADIAN COUNTRY LIFE