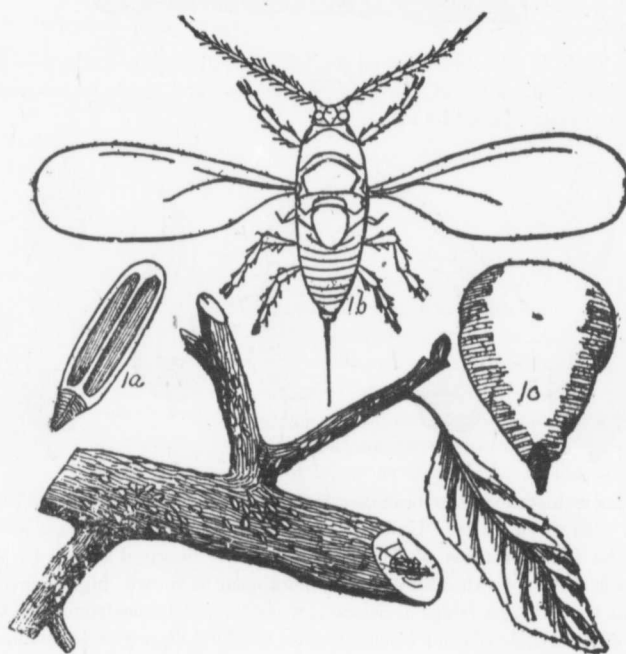


THE SCURFY BARK LOUSE.

(Chionaspis Purpure).

This insect was found this season in the Okanagan district where it was doing considerable damage. It resembles in some respects the Oyster Shell bark louse, yet is sufficiently dissimilar to be readily distinguished from it. In this species the scale of the female is oblong in form, pointed below, very flat, of a greyish white color and about one-tenth of an inch long.

It is found chiefly on the apple but sometimes affects the pear and also the mountain ash. It is far less common than the Oyster Shell bark louse and is nowhere anything like as injurious as that insect.

REMEDY.

Same as for the Oyster Shell bark louse.

SAN



(Fig.

A and B, portions

This dreaded ornamental and fruit tree pest is found in Oregon and Washington this Province. It develops the fact that these destructive insects are found all over the coast.

The remedy to be applied to without first knowing the fact that these destructive insects are found all over the coast.