

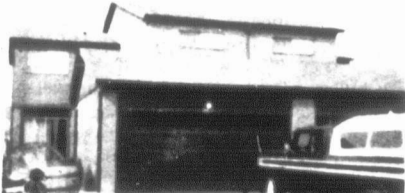
REALTOR
Royal Trust
 THE SIGN
 THAT SELLS

Royal Trust

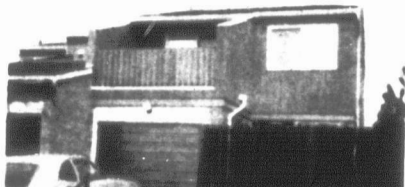
First in homes. First in service.



NEAR MISSISSAUGA RD. — CUL DE SAC \$86,900. Cozy 3 bedroom bungalow, fieldstone front, large lot 135x210'. Good starter home, lots of potential. Excellent area. R. VanHorn 279-3432.



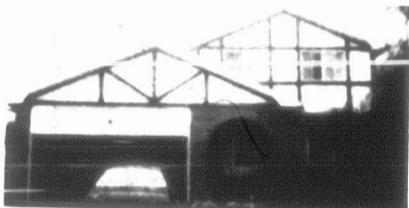
HANDSOME SEMI \$69,900, ERIN MILLS. Fantastic oversized master bedroom, sunny kitchen, fireplace, 1 1/2 baths, splendid rec. room, 2 car garage. This home is a delight! L. Davis, 279-3432.



ASH ROW CRES. BEAUTY! 10% MORTGAGE OF \$54,800. New broadloom, walkout from basement, balcony off master bedroom. Asking \$64,500. Call Pam Johansson, 828-1122 or 823-4512.



ENGLISH TUDOR NESTLED IN TREES \$115,900. Spacious foyer and spiral staircase to 4 large bedrooms, separate dining room, family room with fireplace & walkout to beautiful lot. Much more. Bob Lozinski, 279-3432.



CREDIT WOODLANDS BEAUTY! Superbly maintained 4 bedroom, family home, completely finished, 2 fireplaces, pool sized garden, outstanding decor! B. Lemski, 828-1122.



LOOKING FOR THE BEST? This one boasts an exceptional mortgage, sunshine kitchen, central air conditioning, plus more. For appt. call Doreen Heisdon, 828-1122.



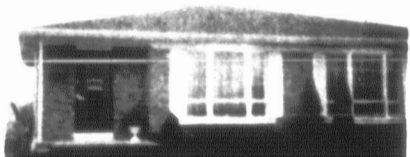
A UNIQUE HOME! Vaulted ceilings give this side split level home a spacious feeling, antique brick fireplace, air cond. etc. Call Robert Bachle, 828-1122.



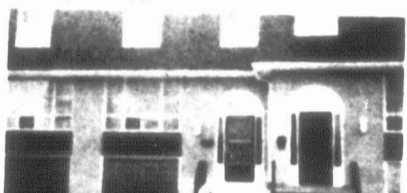
MORTGAGE \$52,500 AT 11 1/4% 2,000 SQ. FT. Beautiful floor plan, privacy plus space, large master bedroom & family room, bright high basement. Call Pam Johansson 828-1122.



MEADOWVALE. \$89,900, charming 3 bedroom home has main floor family room with fireplace & walkout, bright family size kitchen, 3 baths. R. Wonfor, 279-3432.



FIRST TIME OFFERED, BELIEVE ME! IT IS SPOTLESS. Gorgeous large eat-in kitchen, 3 bedrooms, gleaming hardwood floors, 4 pce. bathroom. 10 1/4% mtge. Steve Toplak, 279-8440.



\$41,900. BARGAIN PRICED \$2,000 DOWN PAYMENT Appliances included. Call Jim Rathgeber, 279-3432.



MISSISSAUGA DETACHED \$57,900. Beautifully kept 4 bedroom home with separate dining room, full high basement R I dishwasher, near schools, buses. Gilyan Crew, 279-3432, 844-2735.



SUPER FOUR BEDROOM SEMI UNBELIEVABLE MORTGAGE. Must be sold. Call Jim Rathgeber, 279-3432.



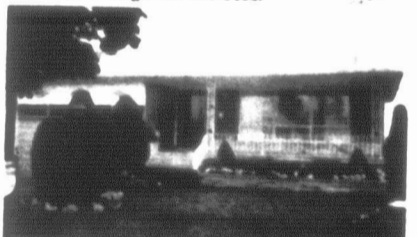
FOUR BEDROOMS BACKS ONTO PARK \$106,900. Terrific first mortgage \$45,500 at 10 1/4% 'til Dec. 83 call Jim Rathgeber, 279-3432.



BACKING ONTO PARK ON QUIET COURT \$93,900. Spotless 3 bedroom home with main floor family room & fireplace, walkout from dining room onto large cedar deck, 2 baths, central air. R. Wonfor, 279-3432.



BLOOR-CAWTHRA \$47,900 \$3,000 down to qualified buyer. Super 3 bdrm home backs onto park. 2 walkouts, ensuite to master. Garage. Deanna Gannon, 279-8440.



BIG VALUE! 4 BEDROOMS HEART OF THE APPLEWOODS! 7 1/4% Long term mortgage, centre hall plan, broadloom over hardwood, 3 baths, 3 walkouts to beautiful garden, spacious family room, gorgeous rec. room, wet bar, central air and more. Steve Toplak, 279-8440.



FAR FROM THE MADNING CROWD 9 1/4% MORTGAGE. This charming home on over 1.3 acre offers privacy yet is close to all facilities in Mississauga. You'll love the remodelled bright eat-in kitchen & beamed dining room ceiling. Call Stuart or Jill Mapp, 828-1122.

5 MINUTES TO SQUARE ONE! LIVE IN CAREFREE STYLE! Luxury end unit, 3 bedrooms, sunken living room, central air, many extras. Excellent development. Call Honor MacPherson Fri. 279-3432.

FOR RENT NEAR SQUARE ONE & BURNHAMTHORPE RD. New 3 bedroom brick semi, broadloomed thruout, 1 1/2 baths, fireplace, garage, references — \$550 monthly. Ruth Van Horn 279-3432.

BACKS ONTO BEAUTIFUL WOODLAND PARK & CREEK. \$53,900. Enjoy this rare townhome for a long time to come, 4 bedrooms, upstairs walkout to cedar deck, fireplace downstairs, 10 1/4% mortgage. Bill Elliott, 279-3432.

ERIN MILLS VALUES. Jerring Mews lot 50x109, fireplace, 3 bedroom + den. Spruce needle cathedral ceiling, fireplace. Peachtree Cr. Large lot, prices start at \$74,900. All fenced. Mr. Philipp, 274-0620 or 828-1122.

WATERFRONT PROPERTY FOR RENT \$1,500 MONTHLY. Unique modern home with water rights, available for early occupancy, fantastic view! Mrs. Rose Gilchrist, 279-3432, 625-3260.

TAKE OVER \$47,000 AT 11 1/4% TODAY!! Super Dutch-clean semi now available in quiet, residential area, carpeted thruout with walkout from kitchen! Brenda Bonham 828-1122.

ALL OFFICES OPEN SUNDAYS FROM 11 A.M.



NEW MEADOWVALE OFFICE

ROYAL TRUST CORPORATION OF CANADA is proud to announce the opening of our newest Real Estate branch at Meadowvale Court, 6549 Mississauga Road North at Erin Mills Parkway, Mississauga, Ontario. Telephone 822-6900. Staffed with fully experienced Real Estate Agents who have been specially trained to meet all of your Real Estate needs,

Royal Trust takes pleasure in now being able to serve the community of Meadowvale in a more concentrated way. We look forward to providing our clients with a high level of real estate knowledge and ability when you call on Royal Trust. Real Estate training never stops at Royal Trust. That is why our agents are the best in the business. We are first in homes because we are first in service.

2545
 Hurontario St.
 279-3432

3200
 Erin Mills Parkway
 828-1122

1090
 Dundas St. E.
 279-8440

Rexdale
 Malton
 745-5144

6549
 Mississauga Rd. North
 822-6900

Royal Trust. Your first name in real estate.

Royal Trust Corporation of Canada Realtor