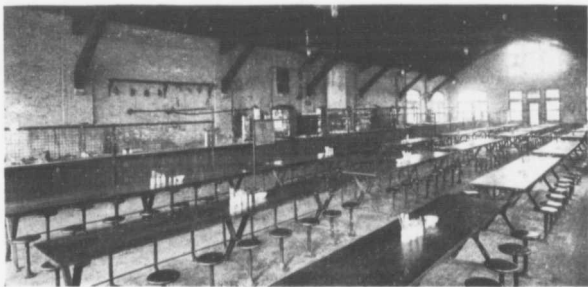


The general plan on which these buildings are operated is as follows :— The Railway Company makes a monthly appropriation sufficient to cover the salary of the secretary, in addition to providing light, heat, repairs, etc. The men pay a fee of \$5, which covers use of baths, reading-room and general social privileges of the building. They pay \$1.25 a week for a room and \$4.50 a week for board. The operation of the building is in the hands of a local committee, composed for the most part of railway men.

Buildings have been opened at Schreiber and Chapleau, on the C. P. R. transcontinental line, in connection with the Railway Y.M.C.A. The buildings recently opened at these points each provide for 44 men in the dormitories, and have a dining-room seating 48 ; three bowling alleys in the basement, two billiard tables, reception room with large open fireplaces made of rough stones, bath-rooms, reading-rooms, smoking-rooms, lockers, etc.



Dining hall at Canadian Pacific Angus Shops, Montreal.

Comfortable Meals

Napoleon said that an army travels on its stomach ; a good comfortable meal for a workingman certainly means better work. Among the many special features at the mammoth Angus Shops, Montreal, where the Canadian Pacific builds and repairs its cars and engines, are the dining rooms for the men, which are unique in Canada. Good, wholesome, well-cooked food is served in warm, comfortable surroundings at very low prices. This service is possible because the Company furnishes free buildings, light, etc. The system used is known as the "help yourself"—the men come in at one door, take a tray and pass along a counter, where they help