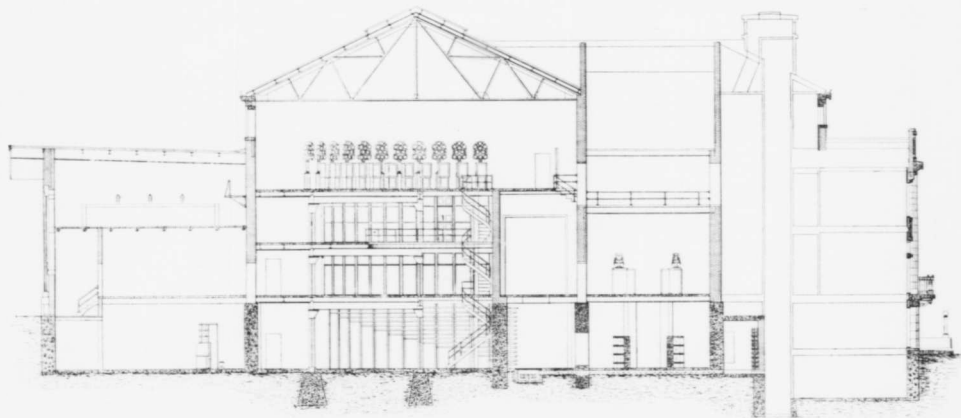


THE ONTARIO POWER COMPANY  
CROSS SECTION OF DISTRIBUTING STATION

ALGERA, FALLS  
J. H. HARRIS  
ARCHT. 1917

E. L. HUNN  
E. L. HUNN  
ENGINEER

SCALE 1" = 10' 0"



SECTION THROUGH CONTROL CHAMBER.