



## WANTED.

At the several collieries of the Dominion coal co. Limited, skilled coal miners and mine laborers.

—9999—9999—9999—9999—

Apply on the works Or by letter

**Dominion Coal Company, Ltd**

*Genuine Garlock Packings*  
FOR ALL PURPOSES.

**Pipe and Boiler Coverings,  
ENGINEERS SUPPLIES.**

also

"Tauril" High Pressure Jointing  
the Best Sheet Packing yet  
Produced.

**THE GARLOCK PACKING CO.**  
HAMILTON, ONTARIO.

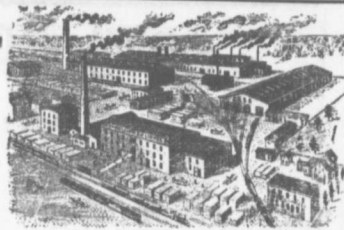
Used by Collieries in Lancashire, Staffordshire  
& Yorkshire

**XTERRA' COLLIERY LAMP OIL.**

For Marant, Hossle Detector or Closed Lamp

PURE WHITE FLAME LOW PRICE

**E. WOLASTON, Tutin St MANCHESTER**  
Sole Representatives for Canada, AUSTEN BROS.,  
Halifax, N. S.



—MANUFACTURERS OF—

RAILWAY  
STREET and  
MINING

**CARS,**

CAR WHEELS Church Pews,  
FORGINGS & Fittings for Stores, Schools, &  
CASTINGS A SPECIALTY

Large Stocks of Foreign and Domestic Lumber on Sale.

**Rhodes, BUILDING MATERIALS  
Curry & co., Ltd. GENERAL**

Branch ROBBIE STREET,  
HALIFAX, N. S.

AMHERST, N. S.

## INTERCOLONIAL RAILWAY

On and after SUNDAY, JUNE 28th 1908 trains  
run daily, Sunday excepted, as follows:—

### —TRAINS LEAVE STELLARTON—

No 144 Mixed for Hopewell	5.55
No 79 Mixed for Trenton	6.30
75 Mixed for Hopewell	6.55
18 Express for Halifax, and St. John	7.40
21 Mixed for Pictou Landing	7.45
62 Mixed for Pictou	7.45
55 Mixed for Mulgrave	8.30
19 Express for Sydney	11.05
28 Mixed for Pictou	11.05
56 Mixed for Truro	11.05
65 Express for the Sydney	13.55
20 Express for Halifax and Montreal	15.50
140 Mixed for Pictou	15.55
101 Mixed for Pictou Landing	16.50
22 Mixed for Hb swell	18.10
60 Mixed for New Glasgow	18.40
85 Express for Halifax and St. John	19.50
17 Express for New Glasgow	21.15
66 Express for Pictou	21.15

### —TRAINS ARRIVE AT STELLARTON

79 Mixed from Hopewell	6.30
75 Mixed from Trenton	6.55
61 Express from Pictou	7.30
18 Express from New Glasgow	7.35
21 Mixed from Hopewell	7.50
62 Mixed from Truro	8.00
29 Mixed from New Glasgow	30.40
17 Mixed from Pictou	19.45
66 Mixed from Mulgrave	13.15
19 Express from Halifax and St. John	16.20
159 Mixed from Pictou	15.35
85 Express from Halifax and St. John	15.35
20 Express from Sydney	15.45
22 Mixed from Pictou Landing	15.10
77 Mixed from Hopewell	15.45
62 Mixed from Pictou	19.25
86 Express from the Sydney	19.45
60 Express from New Glasgow	19.25
17 Express from St. John and Halifax	21.10

All trains are run by Atlantic Standard 14x 20x 40x  
O'clock in midnight. Montreal, N. B. June 28th, 1908.  
Sleeping and Parlor Cars between Halifax and Sydney.  
Dining cars on No. 25 and 36 trains between Halifax and  
Mulgrave. On Nov. 19 and 36 trains between Mulgrave and  
South River.