

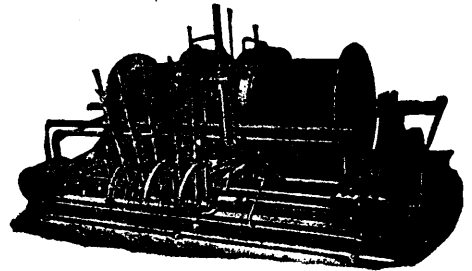
# FLORY HOISTING ENGINES STEAM AND ELECTRIC

Are designed for "STRENUOUS" duty. In Mines, Quarries, and the various requirements for Contractors: Pile Driving, Bridge Building and general Hoisting Purposes . . . . .

**The FLORY CABLEWAY  
and TRAMWAY SYSTEM**

**IS UNEQUALLED**

**Slate Mining and  
Working Machinery**

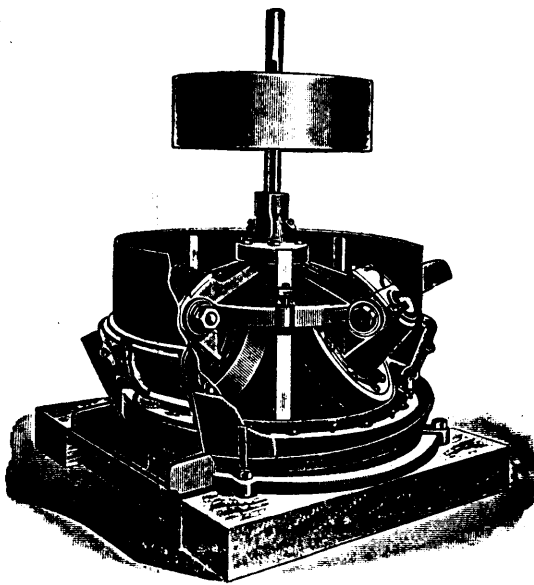


SALES AGENTS—  
I. MATHESON & CO.,  
New Glasgow, N.S.  
W. H. C. MUSSEN & CO.,  
Montreal.

**S. Flory M'f'g Co.**

ASK FOR OUR CATALOGUES.

Office and Works: BANGOR, Pa., U.S.A.

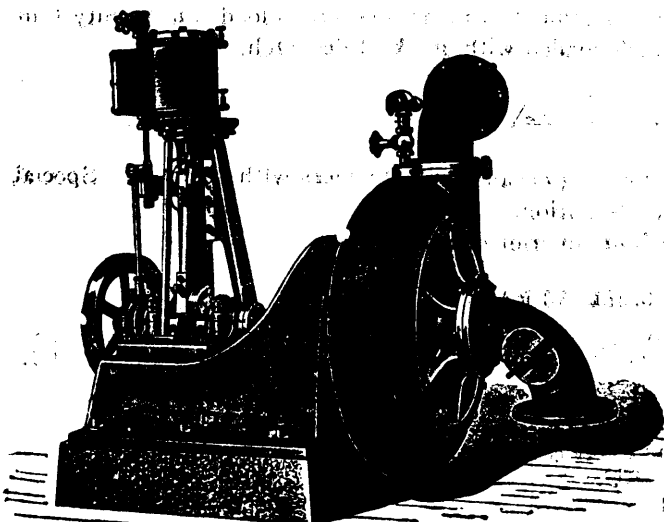


## THE GRIFFIN THREE ROLLER ORE MILL

The Griffin Three Roller Ore Mill is a simply constructed Mill, suitable for working all kinds of ores that require uniformly fine crushing by the wet process. This Mill is a modification of the well-known Chilian Mill, but the rollers run upon a crushing ring or die, which is inclined inwardly at an angle of about 30 degrees, the rollers themselves also being inclined to the central shaft of the Mill, thus utilizing the centrifugal force, as well as the weight of the rollers themselves as a crushing agent. The Griffin Three Roller Ore Mill is therefore a Mill of great strength, and has few wearing parts. We construct these Mills with extreme care, using only the best of raw materials, which are most carefully worked by men who are specialists as mill builders. We sell the Griffin Ore Mill on its determined merits, and will gladly supply full information regarding it to any one.

*Send for free illustrated and descriptive catalogue to*

**Bradley Pulverizer Co. BOSTON, MA**



## MORRIS MACHINE WORKS

BALDWINVILLE, N.Y.

**Centrifugal Pumping Machinery for various Industrial Purposes**

We are building a special solid steel lined pump for handling tailings or slimes in gold mining. Estimates furnished upon application for pumping outfits for special purposes. Write for catalogue. New York office—39-41 Cortlandt St.

AGENCIES—

Hendon & Hubbell, 61-69 North Jefferson St., Chicago, Ill.  
Harron, Rickard & McCone, San Francisco, Cal.  
Zimmerman-Wells-Brown Co., Portland, Oregon.  
H. W. Petrie, Toronto, Ont.