

idea of setting monkeys to pick cotton. Judging from the deftness of monkeys he thought he could revolutionize cotton picking, as one man might look after 20 monkeys, who could pick ten times as fast as the human cotton picker; but when he got to work he found it took about 20 men to look after one monkey, and the problem baffled him. He predicted that the work of the engineer would obliterate tariff walls, and while we might have our local governments and institutions, we did not want to have any fellow looking into our trunks when we crossed a boundary, but we wanted our horses, our timber, our coal and other products freely exchanged between the two countries.

Prof. Swain, of the Massachusetts Institute of Technology, also spoke of the satisfaction it gave him to know that the Canadian society had chosen Boston as the objective of their excursion. The ties between Canadians and Americans were growing, and they have never been so strong as they are at the present time.

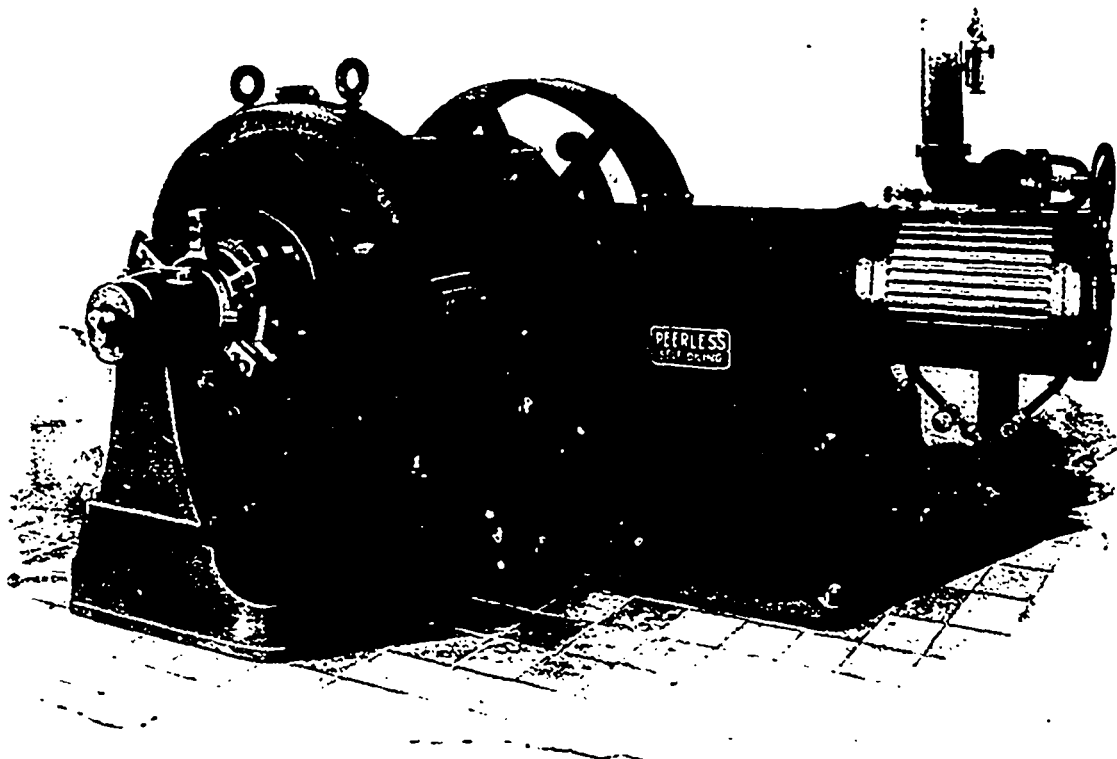
Mr. Dodwell, of Halifax, then sang "In Cellars Cool," and in response to an encore gave "Simon the Cellarer."

Prof. McLeod, of McGill University was called on to reply to the toast of "Our Society." Briefly returning thanks he laid down for himself the law that as secretary of the society his work was to do and not to talk.

### THE ELECTRIC LIGHTING AND POWER PLANT OF VICTORIA HOSPITAL, LONDON, ONT.

One of the most efficient electrical equipments installed during last season was that of the Victoria Hospital at London, Ont. A rigid specification was prepared by the Gilbert Wilkes Engineering Co., of Detroit, under whose supervision the work was installed and tested. The plant, consisting of two direct connected engines and generators of 43 h.p. and 32 k.w. capacity respectively, were to be of noiseless operation, to have a regulation within two per cent. limit, and a capability of being overloaded to twenty-five per cent. for several hours without injury. The contract was secured by the Electrical Construction Co., of London, Ltd., who have installed the entire plant, which has been in use now about five months, giving the very best of satisfaction.

Being a duplicate plant it has been customary for the engineer-in-charge to run each unit for twenty-four hours alternately with the other, as light and power are required continuously throughout the building. However, beginning with 17th February, one of the generating sets was started on a 7-day continuous run night and day, at the end of which temperatures were taken showing the following temperature rise of the different parts above the surrounding atmosphere: Commutator,



DIRECT CONNECTED ENGINE AND GENERATOR, INSTALLED AT VICTORIA HOSPITAL, LONDON, BY THE ELECTRICAL CONSTRUCTION COMPANY OF LONDON, LIMITED, AND E. LEONARD, ENGINEERS, LONDON, ONT.

Charles Baillairge consulting engineer of Quebec city, was also called on and compared the work of the engineer with other professions, with the conclusion that engineering was the head of all professions. A general had to look at things around and facts that were visible, but an engineer had to look into and through things, and to draw inferences from things that were not visible or but dimly known. When one looked about him he would see that all the comforts of modern life were due to the skill of the engineer.

Prof. Bovey here proposed the health of Mr. Metcalf, who had personally done so much for the visitors, and the toast was drunk with "He's all right."

"The Ladies" were remembered in a humorous speech by Col. Francis, resident engineer of the N. Y., N. H. and Hartford Railway, and by T. H. White, of Montreal.

Before separating the president reminded the company of the forthcoming convention of the American Society of Civil Engineers, to be held this year in England, and he hoped not only that the attendance of Americans would be large but that many Canadians would join.

11° C., armature core, 17° C., crank pin journal, 17° C.; left bearing of engine, 13° C.; right bearing of engine, 11° C.; oil of engine, 16° C., field coils of dynamo, 9° C. Considering that a limit is allowed in general engineering practice of 40° C., and sometimes 50° C., the above figures are exceptionally satisfactory. During the week the load had varied between ten per cent. overload and one fifth of full load, no adjustment of the brushes being necessary nor was any special attention required.

The engines which are supplied by E. Leonard & Son, of London, are of their new Peerless self-oiling type, and are lubricated automatically in all parts without attention. Renown engine oil being used for all bearings, and Capital Renown for the cylinder. A description of the principal features of this new engine, which is having a large sale, was given in our December number.

The equipment is electrically controlled by means of a handsome Tennessee marble switch-board, provided with ten light circuit switches, five motor circuit switches, main switches, pilot lights and rheostats, etc., making a very compact and well arranged board. The plant also furnishes power for two direct