

Here and There

The annual tobacco yield in the United States has a value of over \$250,000,000.

A regular air service between Sweden and England has been decided upon and will be established shortly. The terminals will be Malmo and London with intermediate landings in Hamburg. Only six hours will be required for the flight.

The Minister of Lands has announced that a Dutch organization has offered to purchase 200,000 acres of land in the Stuart Lake district, British Columbia, for the purpose of colonization by Dutch agriculturists.

The Canadian Pacific is now perfecting plans to aid in the development of the mining industry of Ontario, by placing car ferries on Lake Temiskaming. These ferries will ply between South Lorrain and Ville Marie, and between New Liskeard, Haliburton and other Ontario points, and the Quebec port.

Major-General MacBrien, chief of staff of the Department of National Defence, Ottawa, addressing the members of the Canadian Club at London recently, announced that it is probable that the Canadian Permanent Force of Militia will be established by Order-in-Council on April 1.

Forty-nine automobile cars of Ford machines recently left Windsor, Ont., for Vancouver, B.C., via Canadian Pacific. This was an unusually heavy movement of cars to one city, and another remarkable feature was that all of the automobiles, some three hundred, were for local consumption.

The Canadian Pacific Railway, which in 1899 brought down to the head of the lakes only 26,000,000 bushels of grain, actually brought down 185,000,000 bushels last season. This is equal to the total volume of grain moved by all the railways of the United States combined during the same time to the terminals at Minneapolis, Chicago and Duluth.

The Canadian Pacific Railway within the next few weeks will have sent out to its station agents 11,000 packets of seed and from thirty to forty thousand flower bulbs, and later on to its Western station agents 100,000 trees and shrubs. It requires 200,000 bedding plants to fill the beds of the permanent gardens and parks of the company every year.

The crack train of the Canadian Pacific Railway, the Trans-Canada, run every summer, will make the trip from Montreal to Vancouver in 90 hours, instead of 92 hours, the schedule run for years past. Previously the 92-hour run was the fastest continental run in North America, and the two hours cut off this time adds to its superiority for travel between the Atlantic and the Pacific.

Seventy-five creameries in Alberta last year produced 17,750,000 lbs. of butter, as compared with 15,417,070 lbs., representing the output of 54 creameries, in 1922, according to the Provincial Dairy Commissioners' report. In addition, the production of cheese has shown a remarkable growth. In 1922, 14 factories produced 931,922 lbs., while in 1923, 13 factories had an output of 1,850,000 lbs., an increase of almost 100 per cent.

The completion of plans for the development of hydro-electric power during the current year will add 900,000 h.p. to the present total of \$228,000 h.p. already installed in Canada. This additional power will be used in British Columbia to assist the mining and pulp industries, in Manitoba to supply rural needs, and in Ontario for gold mining and other industries. In Quebec the chief developments are in connection with the pulp and paper industries, and farther east, in the Maritime Provinces, for public utility purposes.

ALL BUSY

A farmer sawing wood thought he ought to have the help of one or more of his five boys. Lifting up his voice he called but not a boy appeared. At dinner, of course, all turned up. "Where were all of you boys," asked the father, "about two hours ago when I wanted you and shouted for you?" "I was in the shop settin' the saw," said one. "And I was in the barn settin' a hen," said the second. "I was in grandma's room settin' the clock," said the third. "I was in the garret settin' the trap," said the fourth. "You are a remarkable set," remarked the father. "And where were you?" he continued, turning to the youngest. "Me?" said the youngest, thoughtfully. "I was on the doorstep, settin' still!"

Minard's Liniment Relieves Colds.

SHAPING THE YOUNG APPLE TREE

The directing of the growth during the early years of the apple tree is of particular importance. The ideal tree is probably that which has the first branches about 21 inches from the ground, and the five or six branches which form the frame of the tree spaced evenly as far apart as possible. Particularly desirable is it to remove the next to the last branch at the top, which, if left, will produce a weak top because of the forked crotch formed with the top limb.

Heading back at planting time is necessary to balance the loss of roots cut off by digging. Tests made at Kentville show an average growth of 4.82 inches the first year and 20 inches the second year, where newly planted trees had three-quarters of their growth removed, whereas similar trees not headed back made a growth of one inch the first year and 2.4 inches the second year.

Strong growth branches should be suppressed by heading back and weak branches not pruned at all. If the whole tree is weak, a severe heading back in the spring will throw greater vigor into the remaining buds, and thus bring about a more vigorous development. But, if there are weak branches on one side of a tree and strong ones on the other, the reduction of the leaf area on the weak branches will tend further to weaken these branches because of the stronger sap flow toward the greater foliage area. Obviously, therefore, a reduction of foliage area on the strong branches will lessen this tendency and throw more growth toward the weaker branches.

The central branch should be established to maintain the lead, not however, for the purpose of forming a pyramidal tree with a central leader, but that from it several well-spaced scaffold limbs may be developed, thus forming a more desirable type of tree than if scaffold branches are developed on side limbs only. After a few good scaffold branches are formed on this central leader, further tendency toward a pyramidal form with central leader extending high into the air and having many branches radiating from it should be checked, the aim being to form a tree combining the desirable features of the moderate pyramidal form and eliminating the undesirable open centre type of tree.

To balance the tree, the heading back of strong growing branches is necessary. This heading back tends to develop side branches, and attention must be given to the elimination of some of these, so that too many scaffold branches may not be formed. The whole aim should be to build up a framework that will carry large crops of fruit and at the same time not have an over-abundance of large branches.

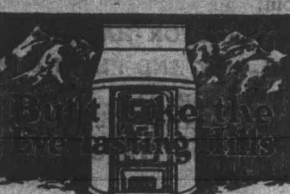
W. S. BLAIR,
Supt. Experimental Station,
Kentville, N. S.

TARNISHED SILVER

Into a granite wear utensil deep enough to allow the silverware to be covered by the solution, put a clean piece of aluminum or zinc, one teaspoon each of salt and baking soda to one quart of water (let the solution come to a boil before dropping in the zinc or aluminum), then immerse the silver so that it is in contact with the zinc. The tarnish should disappear in a few seconds; the silver object should then be removed from the solution, washed, rinsed and polished with a soft cloth. This cleansing method cannot be adopted, however, where there is printed work as in some tea-pots, and in silver knives, with mother of pearl or ivory handles.

The Church Union Bill passed in the Saskatchewan Legislature last Saturday without a division.

ENTERPRISE PIPELESS FURNACE



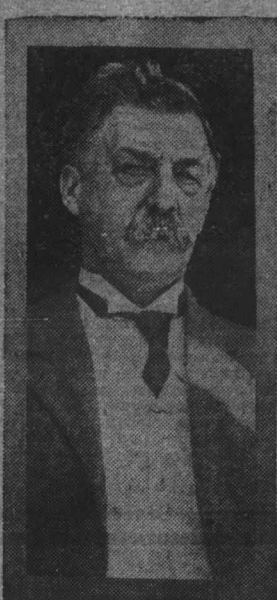
ALL-CAST for length of life.
ALL-CAST for heat and fuel economy.
ALL-CAST joints, cupped and flanged for lasting tightness.
ALL-CAST for extra weight and double strength.
ALL-CAST for cleanliness and health.
ALL-CAST for ease of regulation.

Made by
ENTERPRISE FOUNDRY CO.
LIMITED
SACKVILLE, N.B.

ENTERPRISE PIPELESS FURNACE

Sold in Wolfville District by
H. E. FRASER

SENATOR TURRIFF



Representative for Assiniboine, who has presented a resolution for the reform of the senate, which includes a reduction of salary and the retirement of members when they reach seventy-five years of age. Senator Turriff declared Canada was over governed, and that the opposition party should have the right to appoint members to the senate.

THIS TIME OF YEAR

Hubby—"Such a life. Such a life. I wish I was a dog."
Wife—"George, don't talk like that; it's wicked."
Hubby—"Well, I do—yes, I do. Just think all my taxes paid for me."

Pay your Subscription today



Anglo-Canadian Feed Co., Limited
Halifax, N. S.

Homes Wanted!

For children from 6 months to 16 years of age, boys and girls. Apply to
H. STAIRS, Wolfville
Agent Children's Aid Society.

"Death Accidental"

If this should one day be written after your name—what a godsend to your family if you have chosen a Crown Life Double Indemnity Policy! It means that the Company will pay double the face value. Ask us about this Policy. Telephone No. 237.

WM. C. BLEAKNEY, General Agent.
B. R. HOOPER, Superintendent.
Central Maritime Office: Subway Block, Moncton.

CROWN LIFE INSURANCE COMPANY

MILK AND CREAM

DELIVERED DAILY
SATISFACTION GUARANTEED

A. R. STIRLING
PHONE 57-21

Office Supplies

Typewriter Paper, good quality bond, \$1.45 per ream.
Better quality bond, \$2.35 per ream.
Copy Paper, manilla, \$1.00 per 1000 sheets.
Business Envelopes, \$1.00 to \$2.50 per box of 500.
Carbon Paper, black or purple, 5 cents per sheet.
Onion Skin Paper, cut to size required.
Stenographer's Note Books, 15 cents each.
Adding Machine Rolls, 25 cents.
Orders taken for Typewriter Ribbons, any make.
Orders also taken for Loose Leaf Binders and sheets for same, any size or style of ruling

The Acadian Store

WOLFVILLE, N. S.

SUPPORT
"THE ACADIAN"
YOUR HOME PAPER.

Did You Ever Stop To Think ?

- THAT the wise buyer always reads the advertisements.
- THAT it is the way to save money.
- THAT everybody should know of your home town's business advantages.
- THAT your town is an acknowledged leader in your section for certain lines of business.
- THAT it is a good plan to think before you speak.
- THAT some men often speak before they think.
- THAT it often causes much grief.
- THAT if you think more about Wolfville and study its advantages, you can be a better community booster.
- THAT there are two sides of human nature, optimistic and pessimistic. THERE SHOULD BE ONLY ONE SIDE IN WOLFVILLE.
- THAT some citizens would rather knock their own home town than to boost it. PUBLIC OPINION should make this class of citizen hard to find.
- THAT communities get reputations the same as men.
- THAT Wolfville should have the best of reputations.
- THAT optimism and common sense should be mingled in good proportion.
- THAT if you do this, you will find it easier to think, to speak and to act in a way that will help to make yours a better and bigger community.
- THAT pernicious propaganda in business circles should cease. Now is the time for the trouble monger, the fellow who has done his best to keep things down, to shut up and do some thinking.

THE ACADIAN

PROFESSIONAL CARDS

Eaton Brothers Dentists

Dr. Leslie Eaton, D.D.S., University of
Dr. Eugene Eaton, D.D.S., Pennsylvania
Tel. No. 43.

V. PRIMROSE, D.D.S.

(McGill University)

Telephone 226

J.A.M. Hemmeon, M.D.

Diseases of
EYE, EAR, NOSE and THROAT
(Glasses Fitted)
Royal Bank Bldg., Wolfville, N. S.
Hours: 10-12, 2-3, and by Appointment

Dr. H. V. Pearman

Specialist
EYE, EAR, NOSE and THROAT
Office practice only
WOLFVILLE, N. S.

M. R. Elliott, M.D.

(Harvard)
Office Hours:
1.30 to 3.30 P. M. 7 to 8 P. M.

G. K. Smith, M.D., C.M.

Grand Pre, N. S.
Office in residence of H. P. KINNEY
Hours: 1.30 to 3.30 P. M.
7 to 8 P. M. Phone 311

G. C. NOWLAN, LL. B.

Barrister and Solicitor
Money to Loan
Orpheum Bldg. WOLFVILLE
Phone 240 Box 134

W. D. Withrow, LL. B.

BARRISTER, SOLICITOR
NOTARY PUBLIC
Money to Loan on Real Estate.
Eaton Block - Wolfville
Phone 284. Box 210.

M. J. TAMPLIN

Accounts Checked, Books Written
Up, Balance Sheets
Prepared, etc.
WOLFVILLE, N. S.

H. E. GATES

Architect
HALIFAX, N. S.
Established 1900

D. A. R. Timetable

The Train Service as it Affects Wolfville

No. 96 From Kentville (Mon., Wed., Sat.) arrives 8.41 a.m.
No. 95 From Halifax arrives 10.10 a.m.
No. 98 From Yarmouth, arrives 3.27 p.m.
No. 97 From Halifax (Mon., Wed., Sat.) arrives 6.07 p.m.
No. 99 From Halifax (Mon., Thurs., Sat.) arrives 11.48 p.m.
No. 100 From Yarmouth (Mon., Wed., Sat.), arrives 4.28 a.m.

Welsh Coal

arriving this week
Order Promptly

A. M. WHEATON

PHONE 15

Plumbing and Furnace Work

JOBING PROMPTLY DONE

H. E. FRASER

Phone 75

BREAD!

Our bread has been reduced to
10 Cents per loaf
Our bread is mixed with up-to-date machinery and wrapped before leaving bakery.

W. O. Pulsifer and F. W. Bartheaux
both sell our bread at this price.

A. M. YOUNG

It pays to use MARTIN-SENOUR 100% PURE PAINT & VARNISHES

For Every Purpose—For Every Surface
Write to Head Office, Montreal for Free Booklet
HOME PAINTING MADE EASY

SOLD BY

A. W. BLEAKNEY,
Wolfville

