

TORONTO MARKETS.

Cobalt oxide, black, \$1.50 per lb.
 Cobalt oxide, grey, \$1.65 per lb.
 Cobalt metal, \$2.25 per lb.
 Nickel metal, 45 to 50 cents per lb.
 White arsenic, 17 cents per lb.

May 27, 1918—(Quotations from Canada Metal Co., Toronto).

Spelter, 10 cents per lb.
 Lead, 9 cents per lb.
 Antimony, 16 cents per lb.
 Copper, casting, 28 cents per lb.
 Electrolytic, 28½ cents per lb.
 Ingot brass, yellow, 21 cents; red, 26 cents per lb.

May 27, 1918—(Quotations from Elias Rogers Co., Toronto).

Coal, anthracite, \$10.00 per ton.
 Coal, bituminous, nominal, \$9.50 per ton.

SILVER PRICES.

	New York cents.	London pence.
May 6	99½	49½
May 7	99½	49½
May 8	99½	49½
May 9	99½	49½
May 10	99½	49½
May 11	99½	49½
May 13	99½	48¾
May 14	99½	48¾
May 15	99½	48¾
May 16	99½	48¾
May 17	99½	48¾
May 20	99½	Holiday
May 21	99½	48¾
May 22	99½	48¾
May 23	99½	48¾
May 24	99½	48¾

STANDARD MINING EXCHANGE.

Messrs. J. P. Bickell & Co. report the following closing quotations on the Standard Stock & Mining Exchange at the close of business, May 23, 1918.

Gold.	Bid.	Asked.
Apex	.04	.04½
Dome Extension	.11½	.11½
Dome Lake	..	.20
Dome Mines	8.00	..
Hollinger	4.87	4.95
Imperial	.01	.01½
McIntyre	1.29	1.30
New Ray	.20½	.22
Porcupine Crown	.10	.12
Vipond	.11	.12

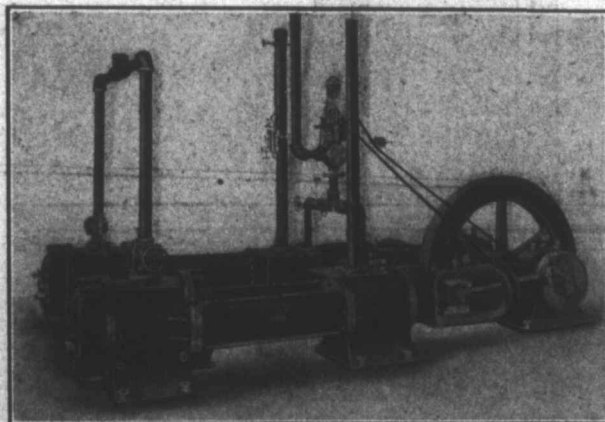
	Bid.	Asked.
Preston East Dome	.02¾	.03
Teck-Hughes	.45	..
West Dome	.11	.11½

Silver.

Adanac	.09¾	.10
Bailey	.03½	..
Buffalo	..	1.05
Beaver	.26½	.27
Chambers Ferland	.11½	.12
Contiagas	2.90	..
Crown Reserve	.16½	.17½
Gifford	.02½	.03
Great Northern	.02¾	.04
Hargraves	.07¾	.08
Hudson Bay	..	34.00
Kerr Lake	5.75	5.90
Larose	.40	.44
McKinley	.39½	.41
Nipissing	8.80	8.90
Peterson Lake	.09½	.10
Right of Way	.03¾	.04
Seneca Superior
Silver Leaf	.7%	.01¼
Temiskaming	.28	.28½
Wettlaufer	.04	.06½
Mining Corporation	3.50	3.65
Provincial	.51	.52

NEW YORK MARKETS.

Connellsville Coke—
 Furnace, †6.00.
 Foundry, †7.00.
 Crushed, over 1-inch:
 Beehive, †7.30.
 † Fixed under Lever Act.
 Straits Tin, spot, f.o.b. none offering.
 Copper—
 Prime Lake, *23.50.
 Electrolytic, *23.50.
 Casting, *23.50.
 Lead, Trust price, 7.00.
 Lead, outside, nom., 7.00 to 7.25.
 Spelter, prompt western shipment, 7.40 to 7.50.
 Antimony—
 Chinese & Jap. nom., 12.12½ to 12.37½.
 Aluminum—Government price, carload lots, f.o.b. plant:
 98-99% Virgin, 32.10.
 98-99% remelt, 32.10.
 No. 12 Aluminum Co., 32.30.
 No. 12 remelt, 32.30.
 Scrap aluminum, 32.10.



For Sale at a Bargain

Rand Class "B-1" Air Compressor

Duplex Steam, Duplex Air. Steam Pressure, 80 to 100 pounds.
 Air Pressure, 80 to 100 pounds. Cylinders 8 inches x 12 inches.

Requires 40 to 46 Steam Horse Power for Full Working Load

Used by us for three or four years, giving good satisfaction; but as we now use electric power instead of steam, we have no further use for this machine. Write us for full particulars.

This Compressor cost us \$1,700 New before the war. We are now offering it at considerably less than half this price

MARSH ENGINEERING WORKS Limited,
 BELLEVILLE, ONT.