

Write for Prices and Terms.

LARGE FEED OPENING.

Dain's Pull Power All Steel Baling Press

Catalogue Mailed on Request.



Compound Leverage Power.

MENTION THIS PAPER.

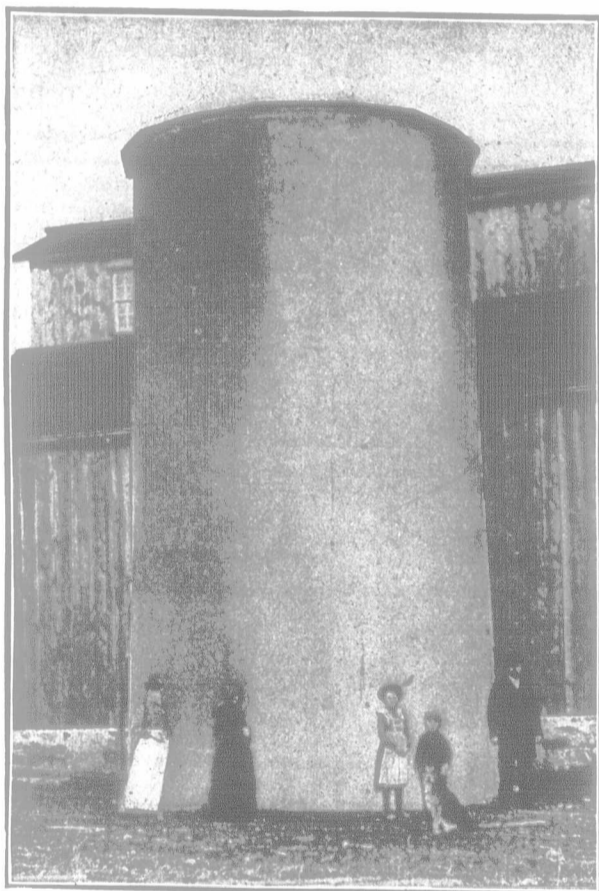
FRED R. SHANTZ
Preston, Ont., Sales Agt. for Can.
DAIN MFG. CO., of Iowa,
Mfrs. of Special Hay Machinery.

THE POWER APPLIED TO PLUNGER IS A DIRECT PULL, NO PUSH PITMAN. For durability, light draft, rapid work and for making smooth and compact bales, we challenge all competition. The press can be set at the center of the stack; therefore, will bale more hay with less labor than other presses. The pneumatic check on power prevents strain or wear from the quick back stroke of the plunger.

Canadian Branch: DAIN MANUFACTURING CO., Preston, Ont.

PORTLAND CEMENT

Concrete Silo



BUILT FOR SHERMAN HARRIS, VERSCHOYLE, ONTARIO,
14 feet in diameter and 30 feet high, with

"RATHBUN'S STAR" BRAND

MANUFACTURED BY The Canadian Portland Cement Co., LIMITED

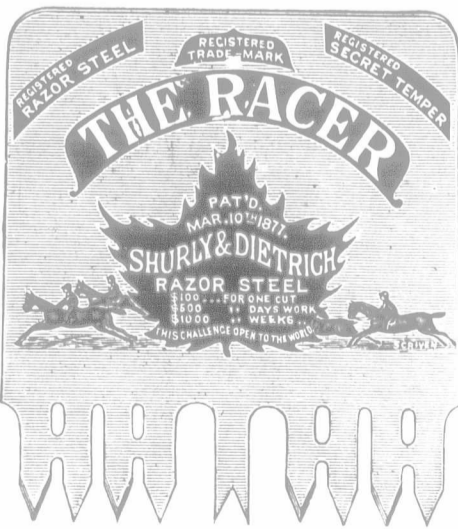
SOLE SALES AGENTS:

THE RATHBUN COMPANY

310 and 312 FRONT STREET WEST, TORONTO, ONTARIO

THE RAZOR STEEL, SECRET TEMPER, CROSS-CUT SAW.

WE take pleasure in offering to the public a saw manufactured of the finest quality of steel, and a temper which toughens and refines the steel, gives a keener cutting edge, and holds it longer than by any process known. A saw to cut fast "must hold a keen cutting edge." This secret process of temper is known and used only by ourselves. These saws are elliptic ground thin back, requiring less set than saws now made perfect taper from tooth to back. Now, we ask you, when you go to buy a Saw, to ask for the Maple Leaf, Razor Steel, Secret Temper Saw, and if you are told that some other Saw is as good, ask your merchant to let you take them both home, and try them, and keep the one you like best. Silver steel is no longer a guarantee of quality, as some of the poorest steel made is now branded silver steel. We have the sole right for the "Razor Steel" brand. It does not pay to buy a saw for one dollar less, and lose 25 cents per day in labor. Your Saw must hold a keen edge to do a large day's work. Thousands of these Saws are shipped to the United States and sold at a higher price than the best American Saws. Manufactured only by SHURLY & DIETRICH, GALT, ONT.



GOSSIP.

Aberdeen-Angus breeders, see the announcement of the annual meeting on December 9th, Commercial Hotel, Guelph, 1.30 o'clock.

Wife—"Oh, doctor, Benjamin seems to be wandering in his mind."
Doctor (who knows Benjamin)—"Don't trouble about that—he can't go far."

It is reported that a young married man, of Golconda, wrapped in the greatest excitement, flew to the telegraph office of his town, and wired his wife's relatives a happening as follows: "Twins to-day, more to-morrow."

Dr. Jephson was noted for being brusque and unceremonious. A great London lady, a high and mighty leader of society, who was taken very ill, sent for him. Jephson was so off-hand with her Grace that she turned on him angrily and asked: "Do you know to whom you are speaking?" "Oh, yes," replied Dr. Jephson, quietly, "to an old woman with the stomachache."

A shining example of the profitability of breeding from first-class stock is that of the 16-year-old Clydesdale mare, Her Ain Sel, purchased by Mr. Robert Davies, Thorncliffe Farm, Toronto, at the dispersion sale of the historic stud of Col. Holloway, at Alexis, Illinois, last month, as reported elsewhere in this issue. The produce of this mare since she commenced to breed, it is said, has sold for \$21,000, and she is believed to be in foal to Macara since April last.

An Irishman was travelling down by train from London to Brighton, and a smart, dapper-looking gentleman got into the same carriage with him at Victoria Station. The Irishman was a good-nature fellow, and when the train started he tried to get into a conversation with his fellow-traveller.

"It's a fine day," said Pat.
No answer.
"I said it's a fine day," repeated Pat.
"Don't talk to me," said the stranger.
"And for why shouldn't I talk to you?" queried Paddy.
"I'm a commercial traveller from London," was the response.
"Oh! indeed," said Pat, "I didn't know that. I beg your pardon. I didn't mean any harm."
Silence followed.

On arriving at Brighton the men went their different ways, but the Londoner, while walking on the seashore with a friend, spotted his fellow-traveller of the morning.

"Wait a minute," said he to his friend, "and see me take a rise out of this Irishman."
"Good afternoon, Pat," says he, addressing the Irishman, "can you tell me what those things are?"
"Which things?" queried Pat.
"Those things," said the Londoner, pointing to a couple of donkeys ambling along the shore.
"Av coorse I can," says Pat.
"Well, what are they?" was the query.
"And don't ye know?" said Paddy, "sure they're commercial travellers from London."
The discomfited Londoner was glad to beat to retreat.

Rupture

In marked contrast with all ordinary truss dealers, this firm stands alone in this field as an institution engaged in the real work of manufacturing and fitting trusses guaranteed to hold and cure Rupture of any kind. Buy Direct from the Makers. We can save you 100 per cent. of what you would have to pay so-called Rupture Specialists. Write for our FREE Book on Trusses—its FREE We Guarantee Perfect Fit by Mail. Address: The F. E. KARN CO. 152 Victoria St., Toronto (4) Canada's Leading Mail Order House.

Farmers Contemplating Marriage, AS WELL AS Those Already in Wedded Bliss,

should present their bride or family, as the case may be, with a BEAUTIFUL MASON & RISCH PIANO. Liberal allowance made for old pianos and organs. Call and get our prices before buying. The Mason & Risch Piano Co., Ltd., 211 Dundas St., London

Now Is a Good Time TO INVESTIGATE

the advantages offered to all who are able and willing to WORK, in NEW ONTARIO. Free Lands; Cheap Lands; Good Markets. Write for information to HON. E. J. DAVIS, Commissioner of Crown Lands, TORONTO, ONT.

BISSELL'S

DISK HARROWS Get there every time. No matter how hard the ground or how tough the job. Built in sizes for 2, 3 and 4 horses.

Write for full particulars and prices. T. E. BISSELL, Dept. W, Elora, Ont.



The first requisite in a good fence is good wire. The LAMB FENCE has high carbon steel laterals and hard steel cross bars. THE H. R. LAMB FENCE CO. LIMITED. LONDON, ONT., AND WINNIPEG, MAN.