



## Why Waste Your Time in Drudgery and Toil, When a GILSON "GOES LIKE SIXTY" ENGINE

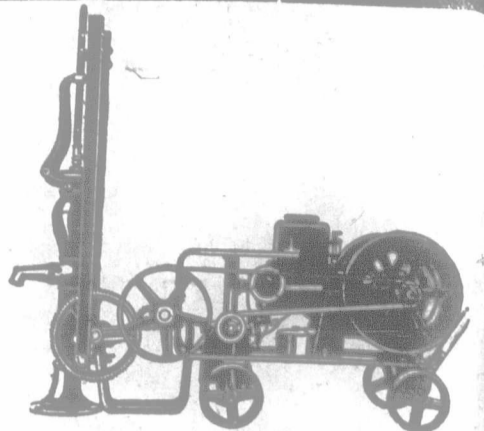
will do your work cheaper, faster and better. It will do all your pumping and will operate your cream separator, churn, washing machine, cutting-box, grinder, pulper, grindstone, etc., at trifling cost. It is a complete power house on wheels—equipped to do your work. It lends itself to more different jobs than any other engine made. It gives the exact speed required for each job—it saves investment for extras required with other engines.

The 1 1/2 and 3 h.-p. sizes consist of a powerful and efficient engine, mounted on truck, with line shaft, five interchangeable pulleys of various sizes, and a universal pump-jack for any pump—all ready for work. No other engine will give the service that the Gilson yields. It is properly equipped for 100% service.

Sizes 5, 6 and 8 h.-p. are either stationary or portable, and are fitted with a patented 5-Rim Friction Clutch pulley and high-tension magneto. No batteries required, easiest starting engines made. No pulling and tugging and cranking. A boy or girl can start them.

Send for complete descriptive catalogue and state what size most interests you. Agents wanted.

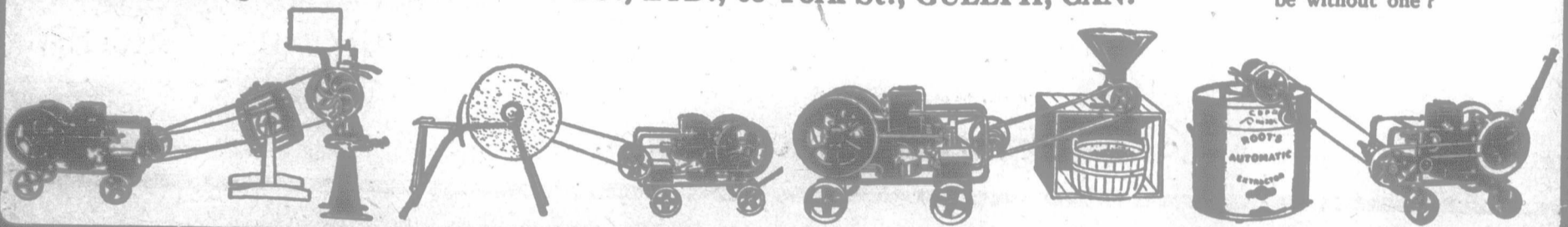
GILSON MFG. CO., LTD., 68 York St., GUELPH, CAN.



### WATER

A Gilson Engine will pump 1,000 gals., or 35 bbls., in one hour for one cent. No need to be stingy with water then. Can you afford to be without one?

**WATER**  
An abundance of water is one of the richest treasures on the farm. Without it neither man nor beast can attain fullest strength and vigor.



### Put T-A Wheels on Your Wagons

These Wide-Tire Steel Wheels are so constructed that they roll smoothly over the roughest roads, without tiring your horses. And they are absolutely accident-proof—yet cheaper than ordinary, wooden wheels.

### T-A Wide-Tire Steel Wheels & Handy Farm Wagon

Our Handy Farm Wagons are built low—making them easy to load and unload—and are especially designed to meet the requirements of the man who wants a light, strong wagon for all kinds of work on the farm.

Let us send you our catalogue. It will give you complete information.



Tudhope-Anderson Co., Ltd.  
Orillia, Ontario.

M. Moody & Sons Co., Terrebonne, Que.  
Selling Agents for Province of Quebec.

### GRAND TRUNK RAILWAY SYSTEM

### HOMESEEKERS' EXCURSIONS

To MANITOBA, SASKATCHEWAN AND ALBERTA

Each TUESDAY until Oct. 28th, inclusive.  
Winnipeg and Return - - - \$35.00  
Edmonton and Return - - - 43.00

Proportionate low rates to other points.  
Return limit two months.

### Settlers' Excursions

To ALBERTA and SASKATCHEWAN

Every TUESDAY until April 29th inclusive, from stations in Ontario, Port Hope, Peterboro, and West, at very low rates.

Through coaches and Pullman Tourist Sleeping cars are operated to WINNIPEG without change, leaving Toronto 11.00 p.m., via Chicago and St. Paul on above dates.

The Grand Trunk Pacific Railway is the shortest and quickest route between Winnipeg-Saskatoon-Edmonton.

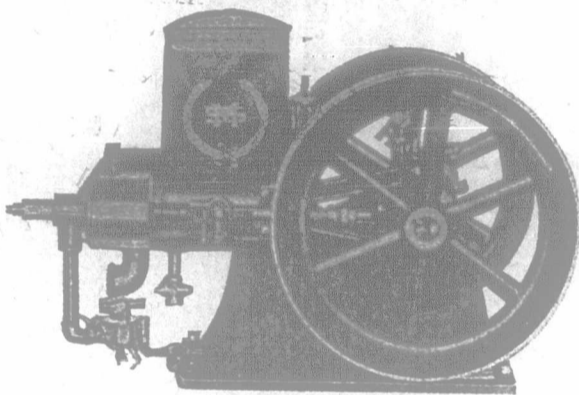
Berth Reservations and particulars from Grand Trunk agents.

### STAMMERERS

can be cured, not merely of the habit, but of its cause. The Arnott Institute has permanently restored natural speech to thousands—is doing it to-day. Write for full information and references to:

The Arnott Institute, Berlin, Ontario.

### THE ST. MARYS "KOAL-OIL-KING"



Gas, Gasoline and Coal Oil Engines are specially adapted for work on your farm.

The St. Marys is the only simple Engine. Easiest engine to start and operate. Anyone can run it. So simple that it can hardly get out of order. It has only one-third the number parts seen on other engines. Runs on one-third less fuel. Runs on gas, gasoline or Coal Oil. Gasoline is becoming higher in price all the time, so you will be money in pocket by having our Engine that runs on coal oil.

It is mounted on skids, ready to run. It will pump your water, grind your feed, saw your wood, run the cream separator, churn and washing machine by day and light your home with electricity by night.

All engines FULLY GUARANTEED and shipped ON 30 DAYS' FREE TRIAL to any Point in Canada. Write for further particulars of our 2 1/2, 4 and 7 horse-power engines.

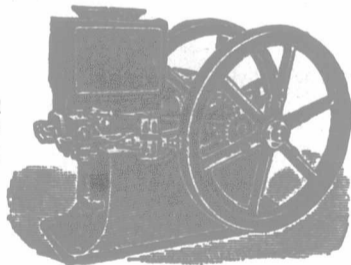
A. W. PARKS & SON

PETROLIA, ONT.

### Why "MONARCHS" are Best

Our "red circle" folder explains the wonderful "Monarch" farm engine, part by part. This engine will saw, pump, grind, run cream separator, cut silage. Move it from place to place. Every part is made by experts, and made to last. Get our folder.

Send a Post Card to-day for the "red circle" folder and prices and terms on 1 1/2 to 35 horse-power sizes.



CANADIAN ENGINES, LIMITED, DUNNVILLE, ONT.

Sole Selling Agents in Eastern Canada

The FROST & WOOD CO., Ltd., Smith's Falls, Ont.  
Montreal, Quebec, St. John, N. B.

### APPLE TREES

We offer, subject to sale, the following stock, which we guarantee to be true to name. No. 1 stock in every respect; 5 to 7 feet high. Price, f.o.b. Pointe Claire, Que., \$27.00 per 100.

- |               |                        |             |
|---------------|------------------------|-------------|
| 200 ALEXANDER | 500 BEN DAVIS          | 600 STARKE  |
| 200 BALDWIN   | 500 DUCHESS            | 600 SPY     |
| 200 BAXTER    | 500 FAMEUSE            | 500 WEALTHY |
|               | 200 YELLOW TRANSPARENT |             |

Also complete list of ornamental shrubs and trees of all kinds.  
WRITE TO-DAY

THE CANADIAN NURSERIES COMPANY, LIMITED  
10 Phillips Square, MONTREAL, QUE.  
Nurseries: POINTE CLAIRE, QUE.

### Cunard Line

Canadian Service  
Immigration Department

### Special Interest to FARMERS' CLUBS

We secure "Help" for Farmers from the country districts of the British Isles. Requisitions must be filled up. Copies sent on application. Average time to get your "Help" about 6 weeks: No fee charged. Only regular fare on Ocean and Rail to pay. You need not be without "Help" this Summer or Fall if you send requirements early. Write for further particulars.

Cunard Steamship Co., Ltd.  
114 King Street W, Toronto.

### STUMP EXTRACTOR

If you are troubled with stumps, give our "Patent Samson Stump Extractor" a trial. It has now been in use in Europe for the past three years with the greatest success. By its assistance, two men will do the work of three men and a horse. It can also be used for felling trees.

WRITE US FOR DETAILS.

The Canadian Boving Co., Ltd.  
164 Bay Street, TORONTO

### MITCHELL SLIDE-EASY QUALITY TIES STYLE VARIETY



**Build Concrete Silos**  
Any size with the London Adjustable Silo Curbs. Send for Catalogue. We manufacture a complete line of Concrete Machinery. Tell us your requirements. LONDON Concrete Machinery Co., Limited, Dept. B, London, Ontario. Largest manufacturers of Concrete Machinery in Canada. 1

**PATENTS** procured everywhere  
EGERTON R. CASE  
Registered Attorney Dept. E, Temple Building,  
Toronto. Booklets on request. 20 yrs. experience

For rapid, low-priced tile and silo-block machines that deliver the goods, write:  
Wm. G. JOY, Napanee, Ontario  
Catalog on request. Dept. 9