

the following contracts last week : Pavements : Kensington avenue, St. Patrick to Baldwin, asphalt, \$3,391; Toronto Asphalt Paving Company; Dundas street, from the bridges to Bloor street, vitrified brick, \$24,735. Constructing and Paving Company; Sparkhall avenue, Broadview to 380 feet east, macadam, \$1,555. City Engineer. Concrete walks—To Godson Contracting Co., Bellevue avenue, west side of Bellevue place, to Oxford, 93c. per lineal foot; Simcoe street, west side, King to Pearl, \$1; Goodman & Co., Dufferin street, west side, north of Bloor, 89½c.; Grant & Co., Strachan avenue, west side, railway to 640 feet south, 95c.; W. R. Pogue, Fenning street, west side, Queen to Humbert, 93c.; Jones avenue, west side, Dagmar to Gerrard, 93c.; Crescent Co., Dufferin street, west side, Dominion to Mississauga, 94½c.; River street, east side, King to Queen, 94½c.; River street, east side, Queen to Mark, 50c.; Wright avenue, south side, Macdonell to Sorauren, 94½c.; Toronto Contracting Co., Spadina, west side, 90 feet north of St. Andrew to 93 feet further north, 17c. per square foot; Tecumseh street, west side, Queen to Farley, 95c.;

## Portland Cement...

HIGH GRADE GERMAN BRANDS FOR GRANOLITHIC AND ARTIFICIAL STONE SIDEWALKS.

**Sewer Pipes, Best English Cements. Best Belgian Cements  
Culvert Pipes, &c. W. McNALLY & CO., Montreal**

**The ALGOMA STEEL COMPANY, Limited**  
Sault Ste Marie, Ont.

Is now booking orders for

## STEEL RAILS

For late Summer 1905, and Early Spring 1906 Delivery.  
Parties intending purchasing will find it to their interest to let us have their specifications at an early date so as to ensure desired deliveries.

**Drummond, McCall & Co.,**

OFFICE : Canada Life Building, MONTREAL

GENERAL SALES AGENTS

One Grade

"The Cement of Quality"

The Highest



## NATIONAL PORTLAND CEMENT



Acknowledged by competent Architects and Engineers to be unequalled for fineness, wonderful development of strength and sand carrying capacity.

THE BEST IS THE CHEAPEST

**The National Portland Cement Company**

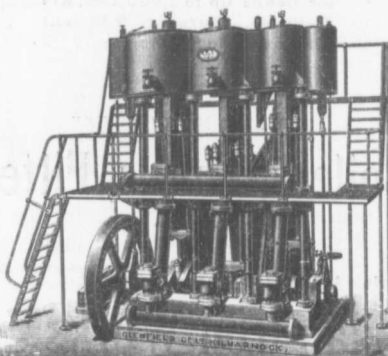
Limited

Toronto Sales Office : 22 James Building

Head Office and Mills : DURHAM, ONTARIO

## Glenfield & Kennedy, Limited

KILMARNOCK



Sluice Valves, Air Valves, Relief Valves, Hydrants  
Stand-Posts

AND ALL CLASSES OF WATER FITTINGS

**Accumulators, Pumps, Hydraulic Machinery**

**Penstocks, Flushers, Sewerage Fittings**

KENNEDY'S PATENT WATER METERS. Over 165,000 in use.

**ASHLEY'S PATENT DEEP-WELL PUMPS**

Canadian Representative : **John T. Farmer,**  
Coristine Building, Montreal