

STYLISH EATON BRAND TAILORED SUITS IN THIS SEASON'S NEWEST STYLES AND PATTERNS

**FIT
GUARANTEED**



**WILL
PLEASE YOU**

YOU SHOULD REMEMBER

that in **EATON Brand Clothing** the lapels and collar are interlined with linen canvas and the collar is padded, giving perfect shape to them and making them lie smoothly and evenly. You will notice the lapels of our coats have a smooth, even, dressy effect and a stylish appearance that is entirely wanting in most clothing. Over the shoulder and around under the arm hole we use sanitary shoulder padding as indicated, which rounds out the shoulders, giving them that broad effect so much desired by young men and makes them fit perfectly and comfortably. You can see the different layers of padding used by examining that part of illustration which represents the shoulder cut off at the arm hole. (See illustration on back cover.)

Our EATON Brand Overcoats, as well as the coats and pants, are made in the same substantial manner as above described.

A Perfect Fit Guaranteed. Our system of fitting people whom we never see with clothes is so simple and perfect that it is next to impossible to make any mistake. Our rules for self-measurement are enclosed herewith; they are plain and easy to understand, and it only requires a few moments to take your own measure or have a friend to do it for you. In ordering clothing of any kind from us, you take no risk whatever, for we positively guarantee to fit you perfectly and please you in every way or refund your money in full, besides paying transportation charges both ways. We surely could not make this liberal offer unless we made clothes properly and in a manner to fully satisfy our customers.

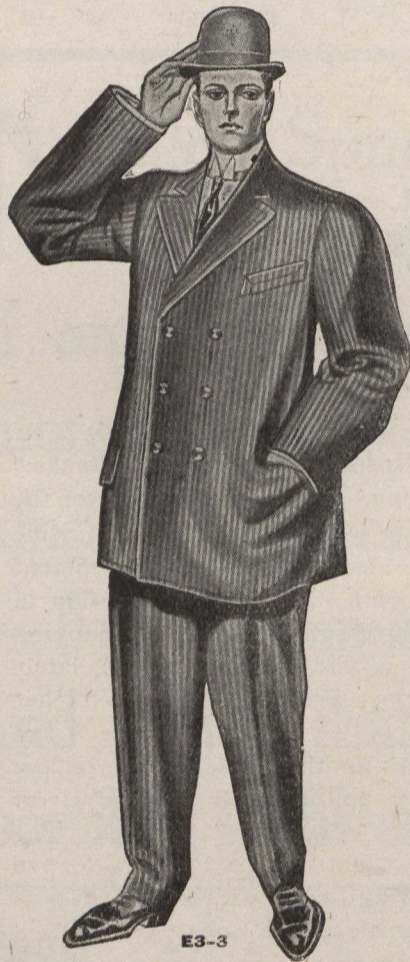


E3-1

MEN'S \$15.00 EATON BRAND SUITS

E3-1. Men's Fine Suits, **EATON Brand** make, for early Spring and Summer wear, the fabrics are those fashionable worsteds, all wool, colors are dark olive, also dark stone drab with colored pin stripes. These are modeled in three buttoned single breasted sack shape. Note the broad, long lapels. The collars are felled by hand, the button holes are hand worked, the coats have fronts of haircloth extending to the bottom, good quality trimmings, as cut E3-1, sizes 36 to 44. **15⁰⁰**

When ordering be sure to state size



E3-3

AN ALL WOOL EATON BRAND SUIT

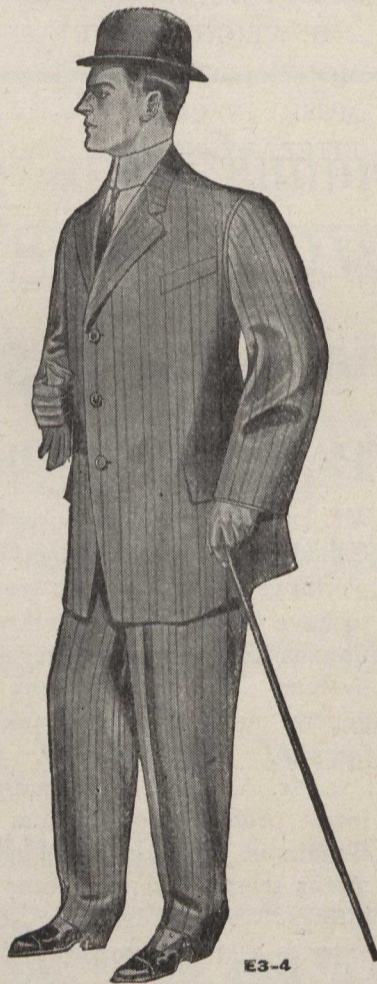
E3-3. **EATON Brand** Suits of Pure Wool Botany Worsteds, dark olive brown with light brown pin stripe, celtic weave effect, a very pretty combination. These are made up three buttoned double breasted sack shape, long broad lapels, stylish up-to-date models, hand felled and hand padded collars, button holes hand worked, hair cloth clear down fronts of coats, trimmings A1 quality, as cut E3-3, sizes 36 to 44. **16⁵⁰**

When ordering be sure to state size

ENGLISH FABRICS MADE UP INTO EATON BRAND SUITS

E3-2. In this particular line we give you your choice of three very stylish designs. One is a very new medium shade of grey diagonal worsted with slight herring bone and colored stripe, the others are dark brown and dark olive with celtic woven stripes and colored pin stripes. The style of coat is single breasted with long lapels and close fitting collars. Any one of these designs makes a handsome, fashionable garment. The linings are of good quality. There is considerable hand tailored work on these suits. As cut E3-2, sizes 36 to 44. **16⁵⁰**

When ordering be sure to state size



E3-4

STYLISH THREE BUTTONED SINGLE BREASTED SACK SUITS FOR GOOD DRESSERS

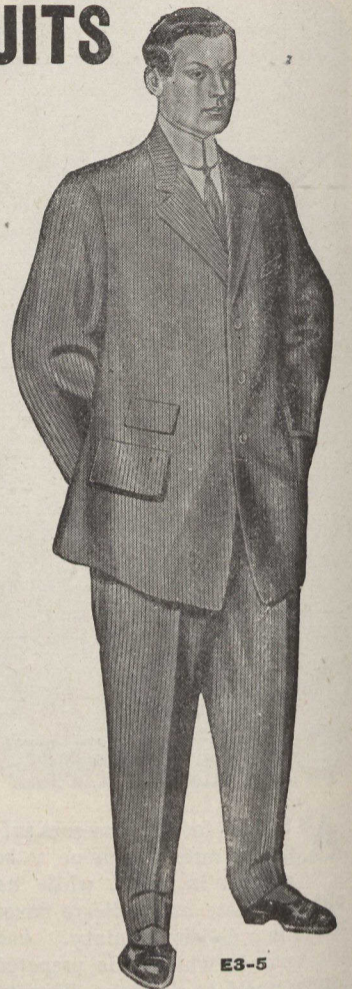
E3-4. There is an old saying, "Tis the clothes that makes the man." How very often this has been the case. Here we are showing three stylish cloths, one is mid grey pin head pattern with broken stripe, another is dark olive with green and brown stripes, the other is Oxford grey hairline stripe with celtic design. These are all worsteds and made **EATON Brand** style, best hand tailored work, extra trimmings, as cut E3-4. sizes 36 to 44. **18⁰⁰**

When ordering be sure to state size

HIGH GRADE SUITS FOR MEN WHO LIKE TO APPEAR WELL DRESSED

E3-6. They are made up in **EATON Brand** way, hair cloth fronts, hand button holes, hand felled collars, hand padded lapels, stylish three button single breasted sack shape. The fabrics are imported from England. One shade is dark olive with celtic woven stripe, the other is that stylish goods so much in vogue this season, a dark grey hairline effect with colored blue thread stripe. The linings are of the best throughout, as cut E3-6, sizes 36 to 44. **20⁰⁰**

When ordering be sure to state size



E3-5

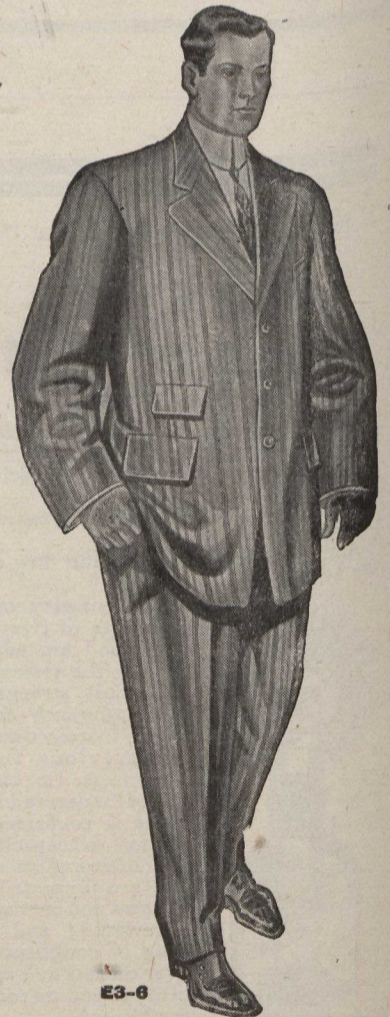
STYLISH HIGH GRADE EATON BRAND SUITS

E3-5. Fine Imported West of England Worsteds. This season for the finest goods the color most desired is grey. Here we give you your choice of two exceptionally fine fabrics, one shade is slate grey hairline stripe, the other is mid grey hairline stripe with broken celtic woven stripe. These are designed after the most fashionable single breasted models, broad long lapels, made up **EATON Brand** way, choicest linings and trimmings, as cut E3-5, sizes 36 to 44. **22⁵⁰**

When ordering be sure to state size



E3-2



E3-6

Complete line listed in our spring and Summer Catalogue

THE T. EATON CO LIMITED
TORONTO CANADA

Satisfaction Guaranteed or your money refunded in full.