

almost to points under the arms. The free edges of the caps are adorned with passementerie, and similar trimming encircles the close-fitting standing collar. The front edge of the overlapping front, the skirt portion of the left front and the bottom of the Princess are richly trimmed with passementerie, and diagonal rows of passementerie are effectively applied on the body portion of the left front and right lining-front. The skirt exposed with panel effect is modishly adorned with three graduated frills of silk, the highest one being set near the knee. The costume may be made up with a slight train or in round length, as preferred.

The small velvet toque is trimmed at the front with velvet ears, roses and a jet aigrette.

Figure No. 501 D portrays a back view of the costume, the materials being fawn cloth and velvet. The sleeves are made of velvet, and the caps and standing collar are entirely overlaid with black mohair braid, similar braid covers the center and side-back seams to the waist-line.

Very elegant gowns may be developed by the mode in satin, velvet, brocade, Liberty satin, cloth, Bengaline, velours or any of the handsome bouretted suitings, color combinations being particularly effective. Bands of fur, passementerie, jet, braid, insertion, gimp, galloon, etc., will form attractive garnitures, and may be applied sparingly or abundantly, according to the material selected for the gown.

FIGURE No. 503 D.—  
LADIES' TEA-  
GOWN.

(For Illustration see  
Page 610.)

FIGURE No. 503 D.—This illustrates a Ladies' tea-gown. The pattern, which is No. 6576, and costs 1s. 6d. or 35 cents, is in thirteen sizes for ladies from twenty-eight to forty-six inches, bust measure, and is shown in three views on page 627.

Handsome India silk showing black discs on a gray ground is the material here represented in the tea-gown, which introduces

huge puff sleeves and a Watteau effect that will be decidedly becoming to the general woman. The front is shirred to yoke depth at the center and falls below in soft, unbroken folds to the lower edge, the closing being made invisibly to a desirable depth at

the center. The shirrings are tacked to short, closely adjusted lining-fronts, and long under-arm darts ensure a becomingly close adjustment at the sides. The back which is arranged upon short center-backs of lining, is shirred at the top to correspond with the front, the fulness appearing between the side-back gores with the graceful effect of a Watteau. Deep Bertha-bretelles arranged upon the gown at round yoke depth stand out broadly over the full sleeves, and their ends disappear beneath the fulness at the center of the front and back. The edges of the Bertha-bretelles are trimmed with ribbon, and tiny bows of ribbon are placed on the rows of shirring at the front and over the closing of the stylishly high standing collar. The immense puff sleeves spread in balloon fashion, and their smooth, coat-shaped linings are covered below the puffs with round cuff-facings.

Developed in an inexpensive woollen material, the mode will produce a pretty and serviceable wrapper for a busy housewife, while the choice of plain, figured or flowered silk, silk or cotton crêpon, challis or cashmere, with a profuse decoration of lace or ribbon, will render the gown sufficiently ornamental to be worn at an informal luncheon or a breakfast *en famille*. A particularly dainty gown may be made of primrose-yellow eglantine, with yellow-and-brown shot velvet for the sleeves and collar.

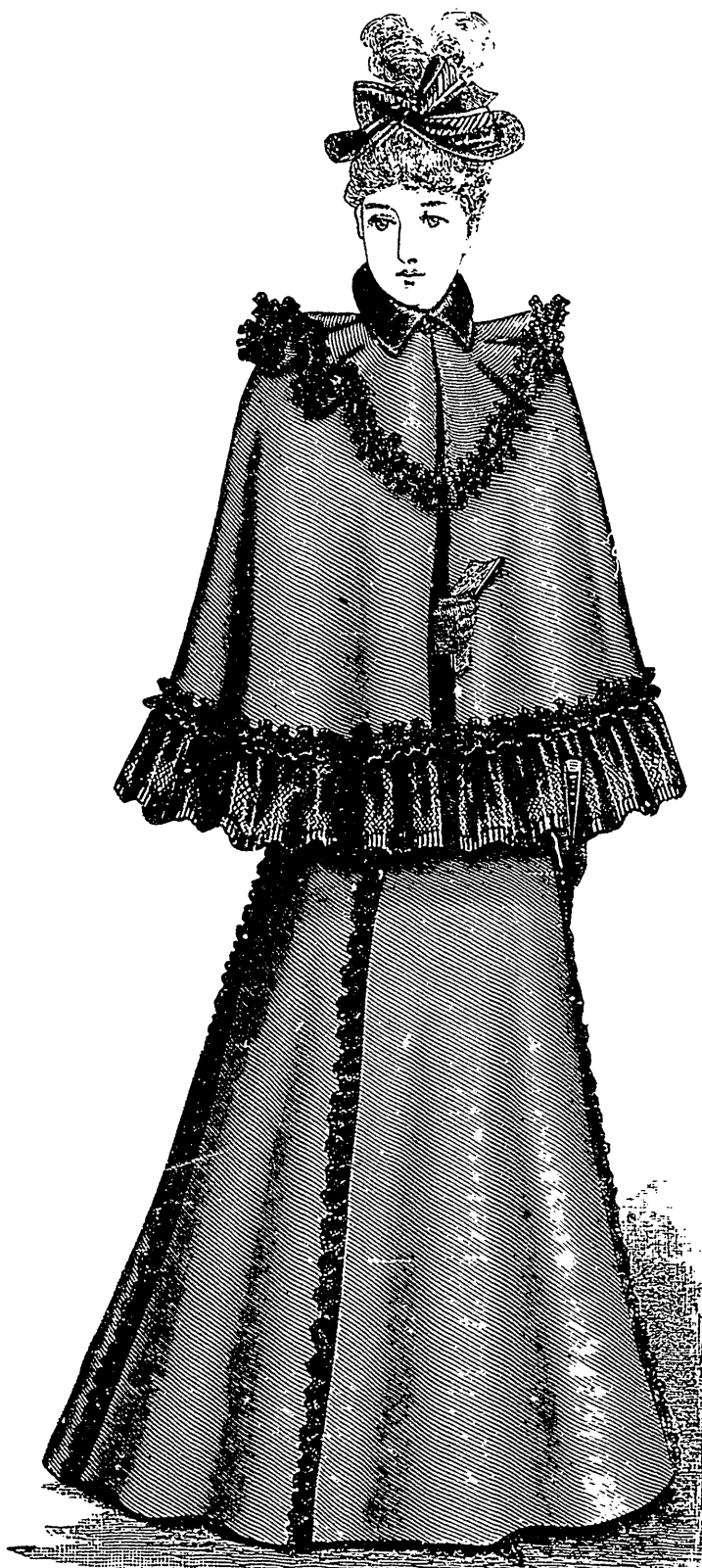


FIGURE No. 509 D.—LADIES' TOILETTE.—This consists of Ladies' Cape No. 6615 (copyright), price 1s. or 25 cents; and Skirt No. 6511 (copyright), price 1s. 3d. or 30 cents.

(For Description see Page 620.)

FIGURE No. 504 D.—  
LADIES' EVENING  
TOILETTE.

(For Illustration see  
Page 611.)

FIGURE No. 504 D.—This consists of a Ladies' waist and Marquise skirt. The waist pattern, which is No. 6577 and costs 1s. or 25 cents, is in thirteen