



### FROST HOG AND CATTLE FENCE

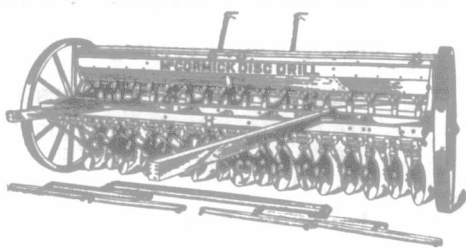
is the ideal combination. The high carbon hard coiled steel wires form a regular "stone wall" against live stock. The Frost Locks, the biggest little things in the world, LOCK running wires and uprights without crimping or bending. There's no repair bill to pay—no cause for worry about cows in the corn or the pigs in the potato patch, when you have Frost Fences on your farm.

If you want the facts in the case, our booklets give some "climbers" in favor of the FROST.

HAMILTON, Ont.  
WINNIPEG, Man.  
CLEVELAND, Ohio

FROST WIRE FENCE CO. Ltd.

## For All Kinds OF Seeding



**N**O machines or implements are quite so effective as **The McCormick Line of Seeding Machines.**

The line embraces Hoe Drills, Shoe Drills, Disk Drills and Broadcast Seeders.

All are equipped with a positive double run force feed which insures perfect and even seeding, even if the grain is not perfectly cleaned.

**Hoe Drills** may be quickly changed to broadcast seeders. Hoes change from straight to zigzag line by convenient lever.

Safety springs on each hoe draw-bar prevents breakage in passing over roots, hidden stones, etc.

Powerful lifting spring aids the lever in easily lifting the hoes. Made in three sizes having 10, 11 and 13 hoes.

**Shoe Drills**—specially adapted to sandy or loamy soils. Driven from both wheels, insuring even flow of seed at all times. Provided with divided lift—user can lift half the shoes with each lever.

Perfect regulation of pressure on shoes.

This drill is made in three sizes: 16, 18 and 20 shoes.

**Zigzag Disk Drill** specially adapted to drilling stubble or trashy land. Being zigzag, with wide spaces between disks, drill will not choke or clog. Splendid for seeding on fresh breaking or sod plowing. Cuts up the earth, making a fine seed bed.

Made in three sizes: 15, 17 and 19 disks.

**Cultivator and Seeder** may be quickly changed from one to the other. Sows all kinds of small grain broadcast and covers it with the cultivator. Equipped with grass seed attachment.

Made in two sizes—6-foot with four sections and 7½-foot with five sections.

**Broadcast Seeder** worked with one horse, fluted force feed and safety spring grain spout. Grass seed attachment. Sows all small grains in any desired quantity. A very strong and efficient machine.

The McCormick line of tillage implements for Canada is complete and includes Smoothing harrows, spring tooth harrows, disk harrows, scufflers, cultivators and land rollers.

Call on the International Agent for information or write nearest branch house for catalog.

CANADIAN BRANCHES: Calgary, London, Montreal, Ottawa, Regina, St. John, Toronto, Winnipeg.

INTERNATIONAL HARVESTER COMPANY OF AMERICA, CHICAGO, U. S. A.

W. C. (INCORPORATED.)



## COW and HORSE HIDES TANNED FOR ROBES

SEND FOR OUR FREE CIRCULAR

CARRUTHERS & CO.,  
Custom Tanners

BRANDON - - MANITOBA

## The Manufacturers Life Insurance Co.

Insurance in Force - - - \$42,270,272.00  
Assets - - - 7,189,682.00  
Surplus on Policy-Holders' Account 906,912.64

## Money to Loan

Agents Wanted

BRANCH AGENCIES:

J. Addison Reid, Regina, Sask. J. D. Reid, Moose Jaw, Sask.  
W. B. Barwis, Calgary, Alberta  
De Blois Thibaudeau, Edmonton, Alberta  
Casper Killer, Supt., Manitoba Herbert J. Goode, Loan Inspector  
E. S. Miller, Mgr., Western Canada, 217 McIntyre Blk., Winnipeg, Man.

IF YOU ARE GOING TO BUY A

## British Columbia Fruit Farm

Remember that Columbia Gardens

is the only irrigated tract of Fruit Land on the market in British Columbia that is reached by railway.

**That** it is the only irrigated tract convenient to local markets.

**That** it is the only tract with a super-abundant water supply.

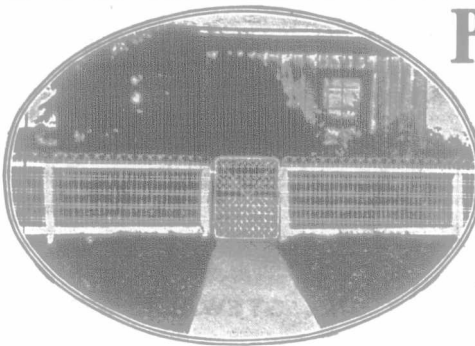
**That** it is the only proposition where no charge is made for the water.

And Don't Forget that

it is being sold at prices about one-half of what is asked for land, elsewhere, possessing none of these advantages.

WRITE FOR PAMPHLET.

R. F. Langford, 533 Spence St., Winnipeg



## Page Lawn Fence

For Lawns, Gardens,  
Cemeteries, Parks, Etc.

Galvanized and coated with white enamel paint.

Any height up to 8 feet and any length from 10 feet up. No waste.

THE PAGE WIRE FENCE CO., Limited

WALKERVILLE, MONTREAL, 412  
TORONTO, WINNIPEG, ST. JOHN

ESTABLISHED 1883

## THE PATMORE NURSERY

Is the oldest and contains the largest and best assortment of nursery stock in the west. You need

TREES, SHRUBS and PLANTS

to aid in making a home. Don't waste your time and money on tender stock. We have been here for 20 years, and know what to offer you. Trust us with your orders, and we will give you the best of value at the lowest cost. We have the hardiest varieties of Fruit Trees, Ornamental Trees, Shrubs, Rose Bushes, Herbaceous Flowering Plants, Rhubarb Roots, etc. Write for catalogue to

THE PATMORE NURSERY, BRANDON, MAN.

# Last Mountain Valley

Buy Your Tickets to Strassburg  
Via Winnipeg by the Soo Line

In this section you can see two Trans-Continental Railways actually building. Write for maps, prices and handsomely illustrated booklet descriptive of this rich region.

Read What Prof. Thos. Shaw Says About this District:

Speaking of Last Mountain Valley, he writes, after personal inspection: "This rich and beautiful farming section lying east of Last Mountain Lake, embraces one of the finest areas, in the Northwest. The land is undulating in this region, mostly open prairie. The soil is a rich, black vegetable loam, from one to two feet deep, and is underlaid with a clay sub-soil. Frost, to injure the wheat is virtually unknown. Being thus favored so highly by nature, it is not surprising that the production of wheat in this region is phenomenally high; in several instances forty to forty-five bushels per acre have been reaped. Oats, Barley, Flax and all small grains yield relatively as good as those of wheat. Potatoes grow most luxuriously. Two or three years ago, there were not more than thirty-five settlers in the entire area, now there are over three thousand and others rapidly coming in."

WILLIAM PEARSON COMPANY, WINNIPEG, CANADA

The heart of the great Saskatchewan Wheat Plains of Western Canada.