

BREAKFAST

A quiet, comfortable place in which you'll enjoy the delicious breakfast—the Palm Room, Sixth Floor.

THE ROBERT SIMPSON COMPANY LIMITED

LUNCHEON

Hot and wholesome, is served daily. Palm Room and Lunch Room, Sixth Floor.

Today's Good News for Simpson Shoppers. Come Early When Possible

Three Special Values in Wanted Dress Goods

54-inch Heavy Wool Poplin, in an assortment of the best selling shades for skirts and suits. Regular \$2.50. Thursday, **2.00** per yard.

A Wide Color Range in Armures and Epingle Cords, 42 inches wide; \$1.50 value. Thursday, per yard **1.25**

Wool Crepe de Chine, the ideal fabric for dresses, in soft draping finish and lovely shades for evening, street or business wear; 42 inches wide. Regular \$1.25. Thursday, per yard **.95**

In the Silk Section Today

Black Taffetas and Satins are much in vogue now for separate skirts. Here are three splendid offers:

300 Yards of Black Silk Taffetas of Swiss manufacture, 35 to 36 inches wide, deep full black. Regular \$1.29. On sale Thursday at **1.10**

\$1.50 Black Satin Duchesse, of soft rich finishes, in perfect dyes, in qualities that we recommend. On sale Thursday, a **1.33** yard

Black Silk Chiffon Taffetas, from the best makers of Lyons and Zurich, beautiful soft weaves; \$2.00 qualities at **1.63**

Clearing Odd Pieces of \$1.00 Quality Striped and Figured Japanese Shirting Silks, **.79** at

Silk Shantung, in natural color, extra big value, Thursday, a **.59** yard

A Shipment of the "New Purple" Chiffon Velveteens has just been unpacked, and is marked at the old price of, yard **1.00**

Handsome New Portieres



A collection of high-class portieres, made up and ready to hang, and what is more we have the materials to match if you want window curtains.

At \$6.95—Of red serge or green basket cloth; 7 ft. 6 in. long, trimmed with neat tapestry border on one side and bottom.

At \$9.75—Of English rep, 7 ft. 6 in. long, in pretty shades of brown, green or blue, and trimmed with banding of tapestry to match.

At \$10.95—Of Egyptian cloth, 7 ft. 6 in. long, in shades of green, brown, blue, red or rose, trimmed with tapestry banding to match.

At \$14.95—Of green velour faced with Italian damask, in rich shades of green, blue or rose, finished with heading and hooks; 6 ft. 9 in. long.

Window Shades—Do not forget to get our prices for window shades, made of best quality Scotch Holland, which is most reliable and serviceable. A phone message will bring a man to measure your windows. Main 7841.

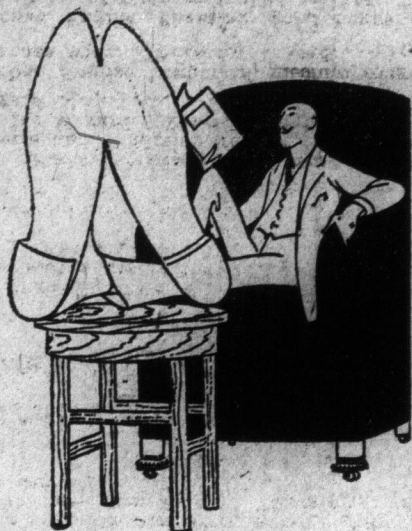
Something New in Stationery

"Marwin Lawn" is a new high-grade writing paper which we are introducing to the public this week. Distinctive in quality and finish, of correct size and shape, handsomely boxed. Paper, per box **.50**
Envelopes, per 100 **.50**

This Complete Outfit of Lighting Fixtures \$14.75

The "National," a set of 11 fixtures with shades, as illustrated, installed for \$14.75.
Insulation Joints (if required) and permit not included.
The many new designs of fixtures and table and floor lamps now being shown in this department will interest every person who has a home to refurbish or rearrange. We also offer at present a large number of fixtures that have been reduced in price for immediate clearance.
(Sixth Floor)

When Boots are such a large item you'll find that it pays to buy the best you can afford.



Boots of the Better Grades for Men and Women

Trot-Moc Boots for Men
English recede style, made of tan calf, special Trot-Moc Goodyear welt sole, blind eyelet lace to top. Price **8.00**

Same Style in Black Calf, \$8.00. Made of glazed kid, nature shape last, Blucher style, Trot-Moc sole; Goodyear welted. **8.00** Priced at

Women's English Walking Boots
Made of tan Russia calf, lace, perforated wing tip and low walking heel; Goodyear welt sole, high cut top, soft dark shade of imported leather, American made. **8.00** Price

Another style has dark brown kid vamp, perforated wing tip, low walking heel, grey suede top; lace style. Price **6.00**

Then there is the famous Trot-Moc Tan Moose Hide Walking Boot, lace style, Goodyear welt sole. A soft, comfortable, stylish walking boot, with specially treated sole. Price **8.00**

Two Specials for Thursday

Women's Ribbon Trimmed Red Felt Slippers, flexible leather sole, low heel, low cut ankle height. Regular \$1.25 and **.99** \$1.35. Thursday

Women's Felt Cloth Bedroom Slippers, padded soles; colors wine and green. **.99** Regular \$1.25. Thursday

Women's Hose

Women's "Pen-angle" Brand Plain Black Cashmere Hose, knitted seamless and close, from fine winter weight yarn. Sizes 8 1/2 to 9 1/2. Thursday special **.39**

Children's English Cashmere Hose, 2-1 ribbed, knitted seamless and extra close; reinforced heel, toe and sole; sizes 6 to 8. Thursday, 3 pairs for **55c**, a pair 20c.

Sheetings and Cottons Specially Priced Today

160 Longcloth, 12 1/2c, a good general purpose Cotton, 36 inches wide. Rush price, Thursday, **12 1/2c** yard

Factory or Unbleached Cotton, heavy quality. 36 inches wide. Thursday, a yard **.11**

Fine Quality Nainsook, 36 inches wide, for women's and children's undergarments, etc. Regular 15c a yard. Thursday, priced at **12 1/2c** per yard

Bleached English Longcloth, medium weight; 36 inches wide. Thursday, a yard **.09**

Bleached English Sheeting, good heavy quality; your choice of plain or twilled weaves; 72 inches wide. Extra special Thursday, priced at, per **.38** yard

Circular Pillow Cotton, 42 inches wide. Thursday, yard **.19**

Heavy Circular Pillow Cotton, 42 inches wide; will launder nicely. Special Thursday, per yard **.23**

Plain Bleached Sheeting, medium weight; 70 inches wide. Thursday, a yard **.24**

Let Us Lay Your Hardwood Floors

We make a special feature of our Hardwood Flooring Department, and have on hand a quantity of the very best lumber it is possible to procure, well seasoned and kiln dried. Our workmen are thoroughly experienced and reliable. We will send a man to measure your rooms and give estimates free of charge.

All selected quarter-cut white oak. Per square foot **.20**
No. 1 quarter-cut white oak. Per square foot **.18**

All selected plain oak. Per square foot **.18**
No. 1 plain oak. Per square foot **.16**

The above prices include cost of laying, waxing and polishing complete.

Come and See the New Patterns in Brussels and Wilton Rugs

Every kind of new design and color is represented in our big new stocks. They are from the very best makers, and come in Oriental, conventional, floral, chintz and two-tone effects, in a big range of sizes and suitable for almost any room.

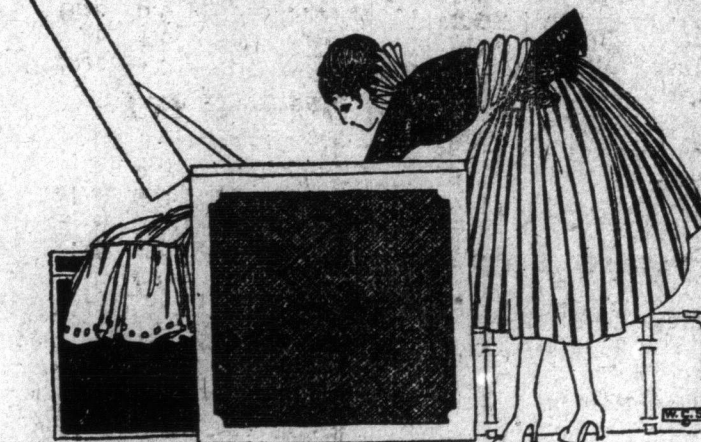
The Wilton Rugs

Size 4.6 x 7.6 **15.00**
Size 6.9 x 9.0 **24.50**
Size 6.9 x 10.6 **29.50**
Size 9.0 x 9.0 **35.75**
Size 9.0 x 12.0 **45.00**

The Brussels Rugs

Size 4.6 x 6.6 **6.75**
Size 4.6 x 7.6 **8.75**
Size 6.9 x 7.6 **12.95**
Size 6.9 x 9.0 **15.50**
Size 6.9 x 10.6 **18.50**
Size 9.0 x 9.0 **21.00**
Size 9.0 x 10.6 **23.75**
Size 9.0 x 12.0 **26.75**
Size 9.0 x 13.6 **33.00**
Size 11.3 x 12.0 **34.25**
Size 11.3 x 13.6 **38.50**

Even if you have to store it away in a trunk till needed, you'll never regret buying this Lingerie at these Mid-winter Sale prices:



Nightgowns, regular \$2.00 to \$10.00, half price **\$1.00 to \$5.00**
Petticoats, regular \$2.50 to \$10.00, half price **\$1.25 to \$5.00**
Envelope Chemise, regular \$2.00 to \$8.50, half price **\$1.00 to \$4.25**

Other Big Values in Whitewear

Women's Drawers, of heavy cotton with frill of embroidery, umbrella style, with deep frill at knee. Both styles. Mid-winter sale price **.39**

Women's Nightgowns, made of excellent quality white cotton crepe; slipover style, with round neck and short kimono sleeves, daintily trimmed with hemstitched tube edge. Thursday **.98**

Women's Corset Covers, made of good quality fine white nainsook, with deep yokes, neck and front of lace with edge of lace to finish neck and arms. Sizes 34 to 42. Thursday **.25**

Women's Drawers, made of heavy cotton, in a wide umbrella style, with deep plain frill of self, finished with deep hem. Both styles. Thursday **.25**

Women's Vests, made of winter weight fine ribbed silk and wool mixed yarn. Low neck and short sleeve style. Sizes 34 to 40 **.69**

Women's Vests and Drawers, made of fine ribbed cotton and wool mixture. Vests are high neck, button front, and long sleeves; the drawers are ankle length, both styles. Cream color. Sizes 34 to 40. Thursday sale price **.75**

Prices to Tempt You to Buy White Wash Goods in January.

Prices like these should tempt you to buy your wash materials now, for it is absolutely certain that you will have to pay more for them later.

2,200 yards White Fancy Pique Skirtings, 36 inches wide. Regular 30c. Thursday **.25**

1,000 yards 40-inch White Voiles, suitable for waists and dresses. This is a particularly big special worth a considerably higher price. Thursday, a yard **.14**

3,500 yards of 40-inch Striped Crepes, suitable for waists and dresses. Regular 39c a yard. Thursday **.25**

1,500 yards of fine white Linon Lawn for waists, girls' wear, etc. 32 inches wide. Regular 55c. Thursday, a yard **.25**

It's hard to keep warm these days, but you'll find these things will help.

Sheep-lined Corduroy Coats for Men \$8.50

The Driver's or Teamster's Favorite Warm Coat for rough weather. The outside a good quality olive shade corduroy. Has heavy sheepskin lining, wide storm collar of beaverette fur; patent fasteners, wind cuffs in sleeves, excellent coat. Sizes 38 to 46. Priced at **8.50** each

Men's Grey Frieze Reefers

Made from a heavy grey frieze cloth in double-breasted reefer style, with wide storm collar, and is lined throughout with warm tweed. A splendid outdoor coat. Sizes 38 to 44. Price **7.50**

Other Warm Things in This List

Men's Scotch Wool Shirts and Drawers, "Pen-angle" brand; made from fine Shetland wool yarns. Shirts are double-breasted. Sizes 34 to 44. Special Thursday, a garment **.59**

Men's Flannelette Night Robes, collar attached style; pinky blue, brown and grey stripes on light grounds. Sizes 14 to 20. Thursday **.98**

Men's and Boys' Silk Neckwear, the balance of our left-overs from the Christmas stock. In the lot are stripes, all-over designs and floral patterns; large flowing end shapes. Thursday **.19**

Men's Khaki Wool Socks, heavy ribbed finish, seamless foot, close fitting ribbed cuff. Thursday, a pair **.39**

Men's Plain Black Cashmere Socks, medium weight, fine union yarn, closely knitted. Sizes 9 1/2 to 11. A pair **.25**

Men's Horsehide Working Mitts, knitted wool lining and ribbed wool cuff, soft pliable leather, large and roomy. Thursday, a pair **.75**



A Sale of Diamonds

Cluster of seven blue white diamonds, in 14k. gold Tiffany style ring, with the new white gold top. Regular \$60.00. Thursday **47.50**

Solitaire Rings, set with perfect diamonds of exceptional brilliancy, Tiffany mountings of 18k. gold, with platinum crown. Reg. \$50.00. Thursday **39.50**

Single Stone Diamond Rings, in showy Tiffany, 14k. gold, brilliant blue-white diamonds. Regular \$20.00. Thursday **14.95**

Diamond Scarf Pins, in showy settings of 14k. white gold, brilliant blue-white diamonds. Regular \$15.00. Thursday **11.95**

Diamond Earrings, for pierced ears, dainty flower design mountings of 14k. gold, brilliant white diamonds. Regular \$10.00. Thursday **7.95**

The Pure Food Market

Telephone Adelaide 6100

MEATS

Round Steak, Simpson quality, lb. **.24**

Cod Steaks, per lb. **.20**

Minced Shoulder Steaks, per lb. **.20**

Brisket Boiling Cuts, per lb. **.20**

Family Sausage, our own make, per lb. **.15**

All Port Sausage, our own make, per lb. **.15**

Maple Leaf Pure Lard, 5-lb. pail, gross weight, special per pail **.75**

Trout Steaks, per lb. **.20**

5,000 lbs. Finest Creamery Butter, special, per lb. **.48**

One can Standard Granulated Sugar, in 20-lb. cotton bags, per bag **.35**

Choice Manitoba Flour, Quaker Brand, 24-lb. bag **1.15**

Finest Bleached Sultana Raisins, lb. **.25**

Finest Feathered Coconut, per lb. **.25**

Fresh Flaked Wheat, 7 lbs. **.30**

Patna Rice, 3 lbs. **.25**

Salt, in bags, 3 lbs. **.15**

St. Williams' Strawberry Jam, 4-lb. pail **.48**

500 fine National Blauk Co.'s Famous Ginger Wafers, regular 30c, while they last, per tin **.27**

Choice Red Salmon, tall tin **.24**

White Beans, 2 lbs. **.25**

Oxo Cubes, 3 tins **.25**

Santa Clara Prunes, 6-lb. tin **.25**

Peanut Butter, in bulk, our own make, per lb. **.12**

Campbell's Soups, assorted, 2 tins **.25**

Upton's Marmalade, 4-lb. pail **.48**

Pure Cocoa, in bulk, per lb. **.25**

Edwardsburg or Beehive Table Syrup, 4-lb. pail **.25**

45c ASSAM TEA, PER LB. 27c.

1,000 lbs. Fine Rich Full-bodied Assam Tea, of uniform quality and fine flavor. Regular 45c. Special, per lb. **.37**

FRUIT SECTION

Finest Sunlight Naval Oranges, good size, sweet and seedless, per dozen **.48**

Choice Grapefruit, 3 for **.25**

Fresh Table Apples, per doz. **.25**

Fresh Parsnips, per doz. **.25**

FLOWER SECTION

Choice Pinks, each **.45**

Pans of Tulips and Hyacinths, each **.45**

Fern Pans, each **.25** and **.35**

Cyclamen, in bloom, each **.25** and **.35**

Boston Sword Ferns, each **.25** and **.35**

Rubber Plants, each **.25**

Cherry Trees, each **.25**

Wear-Ever Aluminum Cooking Utensils

Clean, bright and sanitary. Cost but little more than ordinary utensils and wear for many years.

500 Wear-Ever Aluminum Covered Kettles, same as illustration, 4-quart size. A **1.25** kettle of many uses **1.25**

Phone Orders Carefully Filled. Main 7841.



Gibson Teapots 25c

Slightly imperfect, not enough to diminish their value to you, various sizes and designs, very special on Thursday, at **.25** each

Dinner Set Special at **12.95**

English semi-porcelain with pretty pink floral and conventional border decoration, gold tracing and edges. 97-piece **12.95** set. Thursday

FOR...
Note...
Special to Th...
W...
paration, r...
which they a...
powers to F...
was received...
The all...
cation in th...
purpose of...
the same, sa...
evidence,"...
allies in the...
tail until th...
summarize...
Resto...
Belgium...
Evanc...
France...
reparatio...
Reor...
upon a...
guarante...
Rest...
rest fro...
will of...
Libe...
ans, fro...
The...
man...
populisti...
"It seve...
encompass...
people," sa...
The hot...
of peace co...
granted the...
terms on...
The ful...
"The a...
note which...
of the Gov...
December...
are imposi...
tion which...
and by the...
to the Am...
In a ge...
respect for...
erican not...
with the p...
which sha...
world. The...
of humani...
of interna...
violent co...
agreement...
ary to ins...
an appare...
aggression...
ments fo...
supposes...
conflict;...
the Govern...
as possibl...
are respon...
fering up...
But...
tain at th...
secure to...
the guar...
not of ag...
the cent...
which it...
Europe;...
will enab...
lished up...
are conc...
interests...
dance of...
The...
suffering...
well as to...
they do...
having in...
war, and...
the meas...
sencies...
the wile...
It is...
note of...
sunlight...
with the