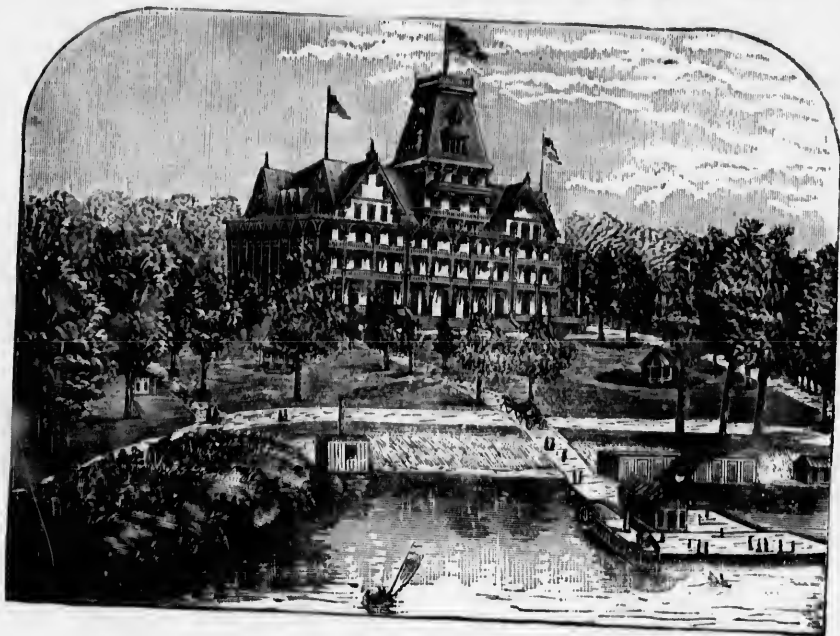


# Thousand Island Park Hotel.



The most central and pleasantly situated Hotel on the River St. Lawrence.

**T**HIS very popular summer hotel will be opened for the reception of guests June 15th. It inaugurates its seventh season under the management of S. V. Warner, who has a wide and favorable reputation as a hotel manager.

The hotel is located on the famous Park from which it derives its name, situated on Wells Island, St. Lawrence River, in the midst of the famed "Thousand Islands."

Being thoroughly and substantially built, the hotel is known for its architectural beauty and solid strength. It has a broad veranda, sixteen feet wide, extending around the building on three sides. Above this are wide balconies for the second and third floors, also a tower 150 feet high, from which a view of the river, with its "countless island gems," as well as the varied scenery of the surrounding country, can be had. The building is supplied with all modern conveniences, as gas, electric bells, baths, etc. Its rooms are high and airy, with double French windows (doors) opening on the veranda or balconies.

There are four flights of stairs located at the extremities of the building, which, together with the French windows and balconies, constitute the best of fire escapes, making it practically impossible to imperil the lives of guests in case of fire. Its dining-room is one of the largest and finest in the country. The hotel has accommodations for 400 guests. Rates reasonable. Table board furnished.

## FINE FISHING TO BE HAD IN THE VICINITY.

A boat livery is connected with the Park, where competent oarsmen can be found at all times. All who are now arranging for their summer vacations are requested to write for terms, stating accommodations required. Address,

**S. V. WARNER,**  
**THOUSAND ISLAND PARK,** **NEW YORK.**