

JAS. PORTER,

W. M. RONALD.

# PORTER & RONALD,

DIRECT IMPORTERS OF

**CROCKERY,**  
**GLASSWARE,**  
**CHINA,**  
**LAMPS,**  
**CHANDELIERS,**  
**CUTLERY,**  
**SILVER-PLATED WARE & FANCY GOODS.**

271 MAIN ST., WINNIPEG.

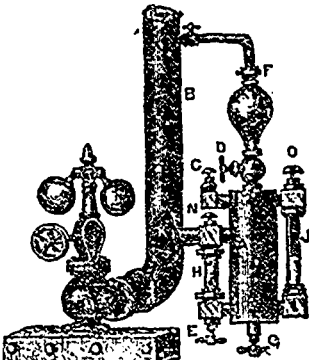
## THE CONTINUOUS FEED LUBRICATOR!

Manufactured by

**R. MITCHELL & CO.,**

St. Peter and Craig Streets, - MONTREAL.

A saving of fully 75% of oil, which will more than cover its cost in a few months. We guarantee perfect satisfaction as they never fail. Send for prices and particulars.



A saving of fully 75% of oil, which will more than cover its cost in a few months. We guarantee perfect satisfaction as they never fail. Send for prices and particulars.

W. FRANKLIN MORPHY.

ALEX. STEWART.

## MORPHY & STEWART,

Barristers, Solicitors, Notaries Public, &c.,  
MINNEDOSA, MAN.

## Chicago, St. Paul, Minneapolis, Omaha, & North-Western Railways.

### GOING EAST.

Express trains leave Minneapolis at 1.00 p.m. and 8.00 p.m.; and St. Paul, 1.45 p.m. and 8.45 p.m.; arriving in Chicago at 7.00 a.m. and 2.00 p.m.

### COMING WEST.

Express trains leave Chicago at 11.30 a.m. (except Sunday) and 9.00 p.m., arriving at St. Paul at 6.15 a.m. and 12.45 p.m., and Minneapolis at 7.00 a.m. and 1.30 p.m.

This is the only line between St. Paul and Chicago running the Pullman Smoking Room Sleepers, and Palace dining cars.

### GOING SOUTHWEST.

The Chicago 5 p.m., and Omaha trains leave St. Paul for Sioux City, Omaha, Kansas City and San Francisco at 7.10 a.m. and 3.50 p.m.

## D. S. BRIGGS,

Wholesale and Retail Dealer in

**LUMBER, LATH AND SHINGLES,**

ALSO

## READY-MADE HOUSES.

358 Main Street, West Side, North of Tracks,  
WINNIPEG.

# CAMPBELL, SPERA & CO.,

WHOLESALE IMPORTERS OF

## GENTS' FURNISHINGS, FANCY DRY GOODS,

SMALLWARES, ETC.

Manufacturers of White Dress Shirts, Colored Shirts, Overalls and Woolen Shirts and Drawers.

Corner of William and Princess Streets,

WINNIPEG, MANITOBA.

## H. R. BANKS & CO.

Manufacturers and Dealers in

**LUMBER,**  
**LATH,**  
**SHINGLES, Etc.**

Planing Mill and Factory,

Garland St., Portage La Prairie.

Branch Yard, Moose Jaw.

## EDWARD TERRY,

PORTLAND, KEENS' and THORALD CEMENTS.

PLASTER PARIS.

Fire Brick and Clay, Sewer Pipes, Hair, Lime, White and Grey, Land Plaster, Salt, &c.,

23 and 25 GEORGE STREET, TORONTO.

## Albert Lea Route.

The favorite route from the North to Chicago and the East. Chicago "Cannon Ball" Express leaves Minneapolis at 7.00 p.m. daily, arriving at Chicago 3 p.m. next day. This is a solid train, consisting of comfortable day coaches, Pullman sleeping cars, and our justly famous palace dining cars, running through without change.

Train leaving Minneapolis 7.40 a.m. has comfortable coaches, Pullman sleeping cars, and Horton reclining chair cars.

J. F. McFARLANE, Gen. Northwestern Agent, Winnipeg, Manitoba.

J. A. McCONNELL, Traveling Passenger Agent.

S. F. BORD, General Traffic and Passenger Agent.

## CARL KAUFFMAN,

Manufacturers Agent & Commission Merchant

SPECIALTY

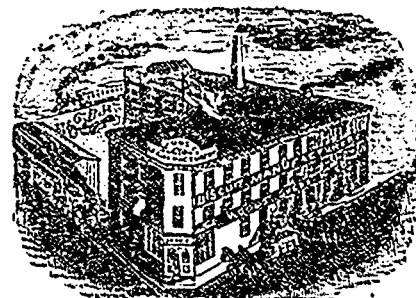
Cigars imported from Hamburg, Germany

42 FRONT STREET EAST, - TORONTO.

## HENRY, SNYDER & CO., PACKERS,

And Wholesale Dealers in Canned Goods, Jams, Jellies, Fruits, Vegetables, Meats, Pickles, &c., &c.  
Packing House and Head Office: 121 & 123 Front St. East,  
TORONTO, ONT.

Highest Awards and Medals at Exhibitions of 1882.



Manufacturers of

**BISCUIT—every variety. Brooms. Coffee & Spices. Self-Raising Flour.**

The Trade only supplied, and on best terms. Send for Price List.

WOODS, OVENS & CO.,

Factory and Office—Corner Higgins, Fonseca and Argyle Streets, Winnipeg.

WILLARD C. COPELAND.

JNO. A. GIBBONS.

COPELAND & GIBBONS,

Brokers & Commission Merchants

Custom House business attended to promptly.

All kinds of goods bought and sold on commission.

## St. Paul, Minneapolis & Manitoba.

SOUTHEASTWARD.

Express leaves St. Vincent at 11.15 p.m. and 11.80 a.m., arriving at St. Paul at 6.20 p.m. and 8.10 a.m., the day following, making close connections with trains running in all directions.

NORTHEASTWARD.

Express leaves St. Paul at 7.00 p.m. and 8.00 a.m., arriving at St. Vincent at 4.20 p.m. and 3.45 a.m. the day following, making close connections with the Canadian Pacific.

Trains run between St. Paul and Minneapolis almost every hour.

Sleeping cars on all night trains.

Trains run on St. Paul time.

## ROBERT MUIR,

### MACHINERY BROKER,

—AND—

MANUFACTURERS' AGENT.

P.O. Box 554. 544 Main St., Winnipeg.