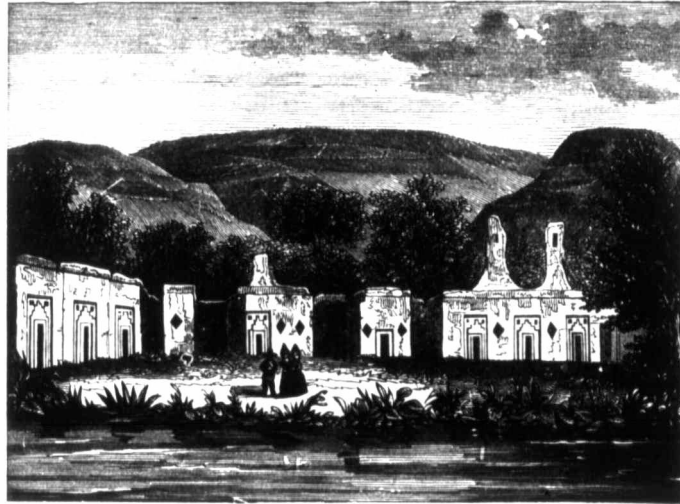


many truncated conical mounds, or huacas, of fine gravel, from some of which interesting relics and large quantities of gold have been taken. The so-called Temple of the Sun is three quarters of a league east of the city near Moche, in connection with which are several adobe structures, one of them, perhaps the temple itself, so far as may be determined by Rivero's vague account, made worse than vague in the English translation, is a regular pyramid of adobes. It is four hundred and fourteen by four hundred and thirty feet at the base, three hundred and forty-five feet wide on the summit, and over eighty feet high, built in terraces, pierced with a gallery through the centre, and affording a fine view of the sea and the city of Truxillo.

The cut represents a ruin on the Island of Titicaca



Ruin at Titicaca.

in the lake of the same name. These island remains are among the oldest of Peruvian antiquities, and all

the s  
these  
"tho  
"wit  
of he  
above  
in the  
At  
hewn  
in sig  
and c  
a for  
sides,  
feet lo  
interio  
which  
ing.  
were  
the r  
the st  
twent  
people  
aqued  
writer  
of wh

The  
nucio c

