

that soil into a brick condition, making it worse than when only partial cultivation was given at the time of sowing. Here is when the weeder comes on, to go over that ground after a hard rain and loosen up the surface. Again, when the spring is cold and backward and weeds are making more progress than the crop, a scratch or two of the weeder will loosen up the surface, facilitate warmth and kill all weeds. Cultivation—light weeder cultivation—is very important to the success of early sowed crops of grain as well as corn.

In conclusion then, success with our forage and grain crops next year calls distinctly for (1), fall plowing; (2), early sowing; (3), frequent cultivation of all grain and forage crops with a weeder such as Breed's.

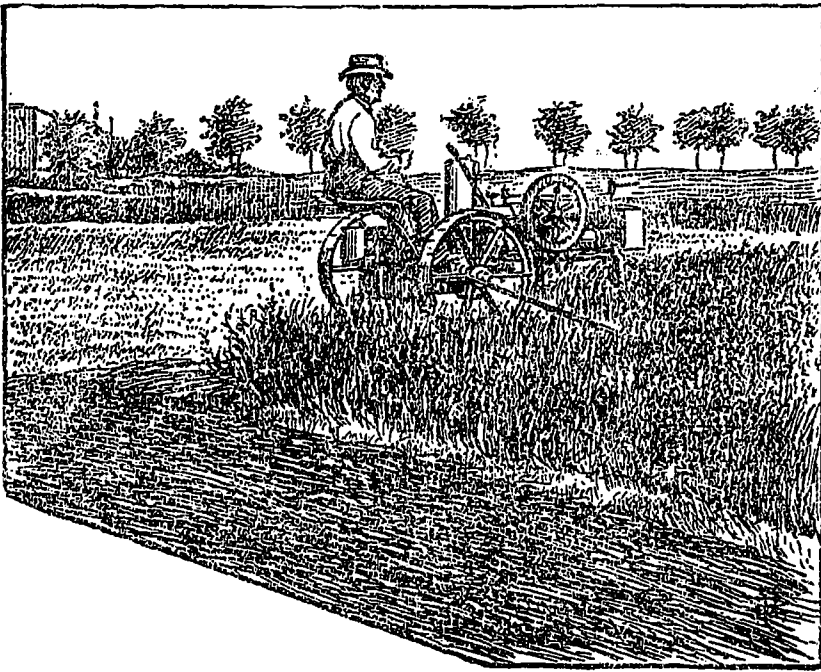
"In times of peace prepare for war."

(1)

J. A. M.

Hermanville, Canada.

(1) Worthy of all attention. Ed.



Automobile-mower at work.

## Household Matters.

(CONDUCTED BY MRS. JENNER FUST).

We have duly honoured the great Festival of the year 1900.

With it ends the great century of wonders, in which the world at large has every reason to be proud that they have been privileged to live.

The starting of a new year is a sort of new life in many years; worries forgotten,

for the time being, are sure to turn up again; picking up the tangled thread of duties, and bringing them into working order once more, is a duty which few escape after great festivities.

In some cases it is just as well that there are duties to take the mind from dwelling too much on the past, and forgetting present blessings. There is no better cure for a morbid mind than constant activity, work of any sort, to keep the mind from roaming.

The mother of a large family is often a