

Lepthyphantes lamprus, sp. nov.

Female.—Carapace fulvous, the eyes edged with black and a marginal stripe on each side also black. Sternum dusky, almost black. Legs fulvous, strongly annulate with black, the femur with an annulus at each end and one at middle, the patella with one at distal end, the tibia and tarsus each with one just proximad of middle and one at distal end, and the tarsus darkened at middle. Abdomen in general black, a network of yellowish or whitish lines above separating off a longitudinal row of black spots on each side with a pointed longitudinal mark between them at base. Venter with a light spot in front of spinnerets. Head protruding a little forward above clypeus, the upper part of which is depressed, from where the latter slants forward. Anterior row of eyes straight; the median eyes decidedly smaller than the laterals and much nearer together, being rather less than their radius apart but nearly their diameter from the laterals. Posterior row of eyes straight; median eyes larger than the laterals from which separated by scarcely their radius, nearer to each other. Area of median eyes much wider behind than in front. Epigynum as shown in Fig. 20, 1.

Length about 3 mm. Length of cephalothorax 1.3 mm. Length of tib.+pat. IV 1.63 mm., the length of tib.+pat. I the same or very nearly so.

Locality.—Utah: Logan Canyon.

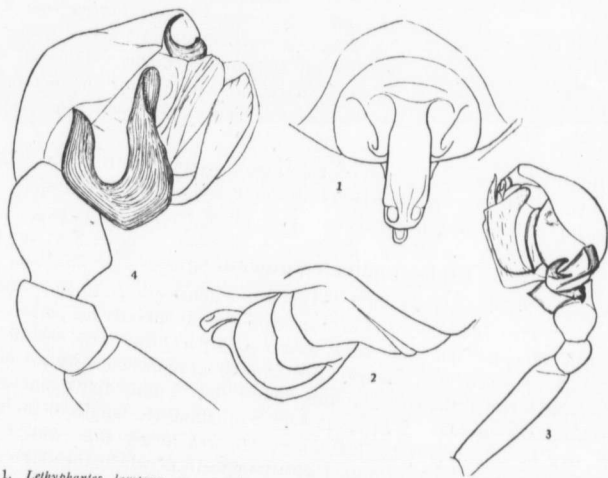


Fig. 20. 1. *Lepthyphantes lamprus*, sp. n., epigynum, ventral view. x74. 2. The same, side view. x74. 3. *Bathyphantes phylax*, sp. n., left male palpus, ectal view. x44. 4. *Microneta ula* sp. n., right male palpus, ectal view. x175.

Bathyphantes phylax, sp. nov.

Male.—Cephalothorax dusky over a yellowish ground. Legs yellowish, slightly darkened, less so distad of the patellae. Cephalorax longer than wide in about the ratio 9:7. Head highest caudad of eyes, convex; sides rather steep and clypeus subvertical with head a little bulging forward above it. Lateral