

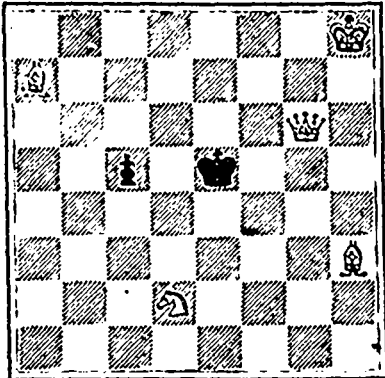
CHESS.

Solution to Problem No. 100.—Q to QKt2. Solved by C. W. L., J. W. Wallace and Mrs. H. Mosoley.

INTERNATIONAL CORRESPONDENCE TOURNAY.

Americans won 28, Canadians 17, games to play 15.

PROBLEM No. 102. BLACK 2 pieces.



WHITE 5 pieces. White to play and mate in 2 moves.

GAME No. 83.

Played in the International Correspondence match between Dr. T. F. Leech, of Judson, Ind., and Mr. R. Short, Advocate, Montreal.

KING'S BISHOP'S OPENING.

- WHITE T. F. Leech. BLACK R. Short. 1 P to K4 P to K4 2 B to QB4 Kt to KB3 (a) 3 Kt to KB3 (b) Kt takes P 4 Kt takes P P to Q4 5 Q to K2 B to QB4 6 P to Q3 P takes B (c) 7 Q takes Kt (d) Castles 8 Q takes BP Q to K2 9 P to Q4 B takes P (e) 10 Q takes B Kt to B3 11 Q to B3 Q takes Kt ch 12 Q takes Q Kt takes Q 13 Castles B to B4 14 P to KB4 Kt to B3 15 Kt to R3 KR to K 16 B to Q2 R to K7 17 R to B2 QR to K 18 K to B Kt to Q5 19 R takes R R takes R 20 B to B3 R to K5 21 B takes Kt R takes B 22 P to KKt3 R to Q7 (f) 23 R to K B to R6 ch 24 K to Kt R to Kt7 oh 25 K to R P to KB3 26 R to QB R to K7 27 K to Kt B to K7 28 P to QB4 B to K5 29 R to Q P to QR3 30 P to QB5 P to Kt7 ch 31 K to B R takes RP 32 R to Q7 R takes KtP 33 R takes BP R takes QRP Resigns.

NOTES.

a This is regarded by most authorities as the strongest defence possible to the King's Bishop's game.

b White does not appear to have a satisfactory game after this move as it allows Black to capture the KP; if the QKt is played to B3, Black can, with advantage, in that event also take the P.

b The continuation given by the authorities is—6—B takes P ch; 7 K to Q, 7 Castles; if White now takes Kt with P, P takes B ch, withdrawing the B, next move, and if White instead retires his B, Black plays B to Q5. Should White play 7 K to B; 7 B to Kt3; 8 B to Kt3, 8 Q to K2;

9 B takes P, 9 Q takes Kt, 10 Q takes Kt, 10 Q takes Q; 11 B takes Q, 11 Castles.

d We should prefer P takes Kt, then if Black plays 7 P to QKt4, 8 Kt takes KBP, &c, and should ho Castle, White can safely capture the doubled Pawn.

e Well played, Black now wins back the Pawn lost, with the superior game.

f Black plays the ending in fine style.—Gazette.

DRAUGHTS-CHECKERS

The proprietors of THE CRITIC offer two prizes—to consist of books on Checkers—to those subscribers who shall send in the greatest number of correct solutions during the current year. No entrance fee required.

Will the checker editors of Boston, Mass., Weekly Globe and of the West Lothian Courier, Bathgate, Scotland, oblige by causing the exchanges to be addressed directly to W. Forsyth, 36 Grafton Street, this city? If they will do so it will much facilitate the work of our checker editor.

SOLUTION.

PROBLEM 136.—Black men 3, 5, 7, 17, 18; white men 12, 14, 21, 24, 27; black to play and win. 18-22 31-27 23-18 3-7 27 23 24 20 14 10 8 3 22-26 27-23 18-15 7-10 23 19 1-15 11 21 14 14 7 26-31 7-16 15-6 6-2 19 15 20 11 11 8 b. wins. VAR. I. 20 10 12 3 3 10 21 14 3-8 23-18 18-9 9-20 black wins.

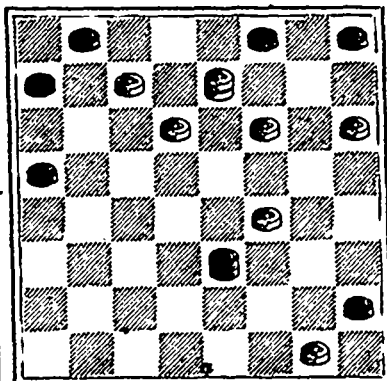
GAME XXXII.

"Double Corner" contributed by Mr. S. Granville from an old clipping. The game is very curious, but we question its soundness.

9-14 9-14 12-16 7-10 22 18 26 22 21 17 22 18 5-9 14-18 16-20 15-22 25 22 23 14 17 13 25 18 11-16 16-23 3-7 19-23 24 19 27 18 14 9 18 4 8-11 10-26 1-5 23-32 30 25 31 22 15 10 14 7 11-15 7-16 6-15 drawn. 18 11 32 27 9 6 14-18 16-19 2-9 22 15 18 14 13 6

PROBLEM No. 138.

Black men 1, 3, 4, 5, 13, 28, kg. 23.



White men 6, 10, 11, 12, 19, 32, kg. 7. White to play and win.

This a most unique position. We have yet to see its twin or counterpart. At first glance most players would think white to be hopelessly beaten. This problem should form an excellent lesson to young players, showing them that a careful research may often be repaid by entirely unlooked-for

results. We believe that this position is from the Glasgow, Scotland, Herald, but would be pleased to receive definite information as to when and where it was first published and who originated it.

Blank forms, (suitable for both Chess and Checkers), for copying down problems, positions, endings, etc. Fifty for 25c, post free. Small sheets, numbered, and with appropriate headings, for recording games. Twenty five for 15c.

NEW GOODS ARRIVING DAILY FOR FALL AND WINTER, 1889.

Variety of Styles and Excellence of Quality. Unsungassed.

ROBT. STANFORD, MERCHANT TAILOR, 156 Hollis St., Halifax, N. S.

Do You Read THE COSMOPOLITAN,

THAT BRIGHT, SPARKLING YOUNG MAGAZINE?

The Cheapest Illustrated Monthly in the World.

25 CENTS A NUMBER. \$2.40 PER YEAR.

ENLARGED OCTOBER, 1889, TO 128 PAGES.

THE COSMOPOLITAN is literally what the New York Times calls it, "At its price, the brightest, most varied and best edited of the Magazines."

SUBSCRIBE--(AN UNUSUAL OPPORTUNITY)--SUBSCRIBE FOR NEW SUBSCRIBERS, FOR ONE YEAR ONLY.

The Cosmopolitan, per year \$2.40 The Critic, per year 1.50 The price of the two publications 3.90 We will furnish both for only 3.00

This offer is only to new subscribers to THE COSMOPOLITAN, and only for one year.

"It has more articles in each number that are readable, and fewer uninteresting pages, than any of its contemporaries."—Boston Journal.

"THE COSMOPOLITAN" FURNISHES FOR THE FIRST TIME IN MAGAZINE LITERATURE,

A Splendidly Illustrated periodical at a price hitherto deemed impossible

TRY IT FOR A YEAR.

It will be a liberal educator to every member of the household. It will make the nights pass pleasantly. It will give you more for the money than you can obtain in any other form.

Do you want a first-class Magazine, giving annually 1536 pages by the ablest writers, with more than 1500 illustrations, by the cleverest artists—as readable a Magazine as money can make—a Magazine that makes a specialty of live subjects?

"The marvel is how the publishers can give so much for the money."—Philadelphia Evening Call.

Send \$3.00 to this Office, and secure both The Cosmopolitan and The Critic

JOHN SILVER & CO., Importers & Dealers in British, Foreign & Home Manufactured DRY GOODS.

The Old Stand, 176 & 178 Granville St., and 2 Buckingham St., Halifax, N. S. ESTABLISHED 1845.

A Splendidly Assorted Stock. New Goods by every Steam. Ring up TELEPHONE 497 for prompt execution of orders

Canadian Enterprise.

The Ladies' Bureau of Information and the Business Men's Employment-Exchange, of 85 Hollis St., was first established in Winnipeg in '74. Since which time offices have been opened in all leading business centres between the oceans. The main object of this institution is to provide Canadian homes for Canadian people, to assist those willing to assist themselves, to protect the employed, to provide a directory of all available situations open with business houses, for the benefit of our patrons. So intensely Canadian in our system that our American offices are managed by Canadians. Circulars fully explaining can be had on application. Telephone order, (134 Prince Wm. St., St. John), 85 Hollis St.