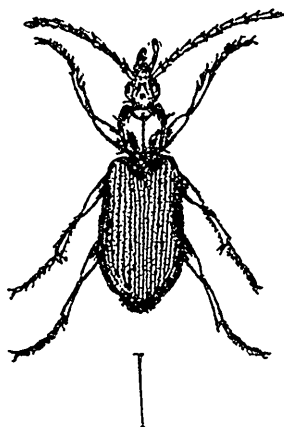


longiori, subcordato, canaliculato, valde basi foveis oblongis impressis, margine laterali postice reflexo. Long. .375in.



Dark with a greenish tint, not shining, beneath reddish brown passing into dirty yellow on the prosternum and gula; first joint of antennæ, mouth-parts and legs testaceo-rufous; prothorax obcordate, scarcely sinuate in front of posterior angles, which are obliquely cut off and slightly rounded, finely channelled at middle, with the anterior angular impression almost obsolete. Head dark bronzy green, sometimes with a small punchform impression at the middle above the frontal impressions. Elytra moderately convex, furrows well-marked, not punctate, interspaces punctulate.

Var. α . Prothorax brown, lighter than head and wing covers.

Var. β . Head and thorax black, underside dark brown.

On being shown a specimen. Dr. Horn declared he doubted the American origin of this species, but as I have individuals from Ste. Rose and Ile Perrot, P.Q., both rather out-of-the-way places and somewhat distant from each other, I venture to describe it as new.

I wish to dedicate it to Geo. H. Horn, M.D., of Phila., the distinguished American coleopterist, who well deserves such an honor.