

\$3.25; 26, \$3.40; 28, 3.85; 29, \$4.15; 10 $\frac{1}{4}$ , \$4.15 per 100 lbs. Fleur de Lis—28-gauge, \$4; 26, \$3.80 per 100 lbs. Demand very active.

**Tank Plate.**—3-16-inch, \$2.40 per 100 lbs.

**Tool Steel.**—Jowett's special pink label, 10 $\frac{1}{2}$ c. Cammel-Laird, 16c. "H.R.D." high speed tool steel, 65c.

**Tin.**—The feeling in tin is firm, and the price 32 to 33c. per lb.

**Wheelbarrows.**—Navy, steel wheel, Jewel pattern, knocked down, \$21.60 per dozen; set up, \$22.60. Pan Canadian, navy, steel tray, steel wheel, \$3.30 each; Pan American, steel tray, steel wheel, \$4.25 each.

**Zinc Spelter.**—A very active movement continues, and a large business is being done. Price very firm at \$5.75 to \$6 per 100 lbs.

#### CAMP SUPPLIES.

**Beans.**—Hand picked, \$2; prime, \$1.90.

**Beets.**—85c. a bag.

**Butter.**—Dairy prints, 21 to 22c.; creamery rolls, 27 to 28c.

**Canned Goods.**—Peas, \$1.00 to \$1.50; tomatoes, 3s, 85c. to 95c.; pumpkins, 3s, 80 to 85c.; corn, 75 to 85c.; peaches, 2s, white, \$1.50 to \$1.60; yellow, \$1.90 to \$1.95; strawberries, 2s, heavy syrup, \$1.90 to \$1.95; raspberries, 2s, \$1.90 to \$1.95.

**Carrots.**—60c. and 65c. a bag.

**Cheese.**—Large, 12 $\frac{1}{2}$ c.; twins, 13c.

**Coffee.**—Rio, green, 10 to 12 $\frac{1}{2}$ c.; Mocha, 21 to 23c.; Java, 20 to 31c.; Santos, 11 to 15c.

**Dried Fruits.**—Raisins, Valencia, 5 $\frac{1}{2}$  to 6c.; seeded, 1-lb. packets, fancy, 7 $\frac{1}{2}$  to 8c.; 16-oz. packets, choice, 7 to 7 $\frac{1}{2}$ c.; 12-oz. packets, choice, 7c.; Sultanas, good, 5 to 6c.; fine, 6 to 7c.; choice, 7 to 8c.; fancy, 8 to 9c.; Filiatras currants, 6 $\frac{1}{2}$  to 7c.; Vostizzas, 8 $\frac{1}{2}$  to 9c.; uncleaned currants,  $\frac{1}{2}$ c. lower than cleaned. California Dried Fruits.—Evaporated apricots, 14 to 15c. per lb.; prunes, 60s to 70s, 7 to 7 $\frac{1}{2}$ c.; 90s to 100s, 6 $\frac{1}{2}$ c.; evaporated apples, 9 $\frac{1}{2}$ c.

**Eggs.**—Cold storage, 26 to 28c.; new laid, 33 to 35c. per dozen, in case lots.

**Flour.**—Manitoba Flour.—Quotations at Toronto are:—First patents, \$5.60; second patents, \$5.10; strong bakers', \$4.90; 90 per cent., Glasgow freights, 28s. 6d. Ontario Flour.—Winter wheat patents, for export, \$4.20 to \$4.25, in buyers' sacks outside.

**Lard.**—Tierces, 16c.; tub, 16 to 16 $\frac{1}{2}$ c.; pails, 16 $\frac{1}{2}$  to 16 $\frac{1}{2}$ c. per lb., market firm.

**Molasses.**—Barbadoes, barrels, 37 to 45c.; Porto Rico, 45 to 60c.; New Orleans, 30 to 33c. for medium.

**Onions.**—\$1.25 a bag.

**Potatoes.**—Best, 60 and 65c. a bag.

**Pork.**—Market uncertain. Short cut, \$28 per barrel; mess, \$26.50.

**Rice.**—B grade, 3 $\frac{1}{2}$ c. per lb.; Patna, 5 $\frac{1}{2}$  to 5 $\frac{3}{4}$ c.; Japan, 5 $\frac{1}{4}$  to 6c.

**Salmon.**—Fraser River, talls, \$2; flats, \$2; River Inlet, \$1.55 to \$1.75.

**Smoked and Dry Salt Meats.**—Long clear bacon, 13 $\frac{1}{2}$  to 14c., tons and cases; hams, large, 14 to 14 $\frac{1}{2}$ c.; small, 15 $\frac{1}{2}$  to 16c.; rolls, 14 $\frac{1}{2}$  to 14 $\frac{3}{4}$ c.; breakfast bacon, 17c.; backs (plain), 17 $\frac{1}{2}$  to 18c.; backs (peameal), 17 $\frac{1}{2}$  to 18c.; shoulder hams, 12c.; green meats out of pickle, 1c. less than smoked. Market steady.

**Spices.**—Allspice, 16 to 19c.; nutmegs, 30 to 75c.; cream tartar, 22 to 25c.; compound, 15 to 20c.; pepper, black, pure Singapore, 14 to 17c.; pepper, white, 20 to 30c.

**Sugar.**—Granulated, \$4.85 per 100 lbs. in barrels; Acadia, \$4.75; yellow, \$4.45; bags, 5c. lower; bright coffee, \$4.65; bags, 5c. less.

**Syrup.**—Corn syrup, special bright, 3 $\frac{1}{2}$ c. per lb.

**Teas.**—Japans, 20 to 35c. per lb.; Young Hysons, 16 to 35c.; Ceylons, medium, 16 to 45c.

**Turnips.**—45c. a bag.

\* \* \*

Winnipeg, December 7th, 1909.

Winter weather has set in in earnest in Winnipeg, and outside activity is practically at an end for a few months. Consequently business with the supply dealers is quiet. The chief concern of the contractors now is the rushing of interior work. Plumbers and steamfitters are very busy, as apart from work on large buildings this is the season of the year when they have their harvest.

Lumber for finishing work is active and there is a great deal of finishing in Winnipeg to be done this winter. It is learned that some of the leading architects are already working on plans of large buildings to be erected next season, and the outlook generally for the coming year would seem to be very bright. The season just closed has been a splendid one for builders and contractors, and the feeling is that 1910 will be even better. There will be plenty of money available for new buildings, and dealers are placing large orders for early delivery.

Quotations on the local markets are as follows:—

**Anvils.**—Per pound, 10 to 12 $\frac{1}{2}$ c.; Buckworth anvils, 80 lbs., and up, 10 $\frac{1}{2}$ c.; anvil and vice combined, each, \$5.50.

**Axes.**—Chopping axes, per dozen, \$6 to \$9; double bits, \$12.10 per dozen.

**Barbed Wire.**—4 point and 2 point, common, \$3.15 per cwt.; Baker, \$3.20; Waukegan, \$3.30.

**Bar Iron.**—\$2.50 to \$2.60.

**Bars.**—Crow, \$4 per 100 pounds.

**Beams and Channels.**—\$3 to \$3.10 per 100 up to 15-inch.

**Boards.**—No. 1 Common Pine, 8 in. to 12 in., \$38 to \$45; siding, No. 2 White Pine, 6 in., \$55; cull red or white pine or spruce, \$24; No. 1 Clear Cedar, 6 in., 8 to 16 ft., \$60; Nos. 1 and 2 British Columbia spruce, 4 to 6 in., \$55; No. 3, \$45.

**Bricks.**—\$10, \$11, \$12 per M, three grades.

**Building Paper.**—4 $\frac{1}{2}$  to 7c. per pound. No. 1 tarred, 84c. per roll; plain, 60c.; No. 2 tarred, 62 $\frac{1}{2}$ c.; plain, 56c.

**Coal and Coke.**—Anthracite, egg, stove or chestnut coal, \$0.75 large lots to \$10.50 ton lots, net; Alleghany soft coal; carload lots, basis, Winnipeg, f.o.b., cars, \$6 per ton; canal coal, \$10.50 per ton; Galt coal, \$2 f.o.b., carload lots, \$9 single ton; coke, single ton, \$7 at yard; large lots, special rates. American coke, \$11 to \$11.50 a ton; Crow's Nest, \$11 a ton.

**Copper Wire.**—Coopered market wire, No. 7, \$4 per 100 lbs.; No. 6, \$4; No. 10, \$4.06; No. 12, \$4.20; No. 14, \$4.40; No. 16, \$4.70.

**Copper.**—Tinned, boiler, 26 $\frac{1}{2}$ c.; planished, 29 $\frac{1}{2}$ c.; boiler and T. K. pits, plain, tinned, 45 per cent. discount.

"QUEEN'S



HEAD"

## Galvanized Iron

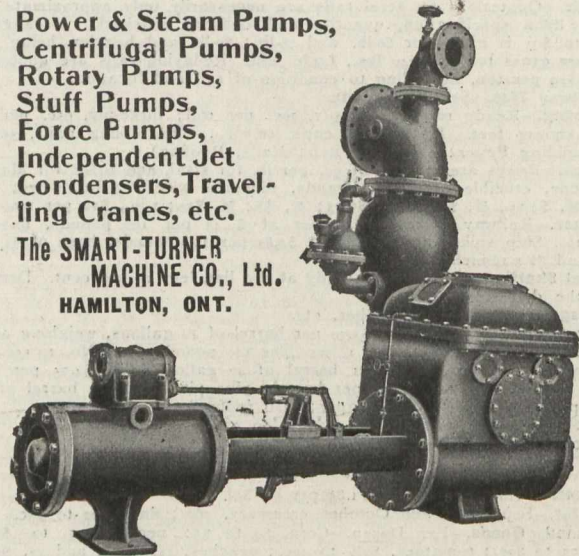
The World's Standard for half a Century.

John Lysaght, Limited  
Makers, Bristol

A. C. Leslie & Co., Ltd.  
Montreal

Power & Steam Pumps,  
Centrifugal Pumps,  
Rotary Pumps,  
Stuff Pumps,  
Force Pumps,  
Independent Jet  
Condensers, Travel-  
ling Cranes, etc.

The SMART-TURNER  
MACHINE CO., Ltd.  
HAMILTON, ONT.



**Cement.**—\$2.25 to \$2.50 per barrel, in cotton bags.

**Chain.**—Coil, proof,  $\frac{1}{4}$ -inch, \$7; 5-16-inch, \$5.50;  $\frac{3}{8}$ -inch, \$4.90; 7-16-inch, \$4.75;  $\frac{1}{2}$ -inch, \$4.40;  $\frac{5}{8}$ -inch, \$4.20;  $\frac{3}{4}$ -inch, \$4.05; logging chain, 5-16-inch, \$6.50;  $\frac{3}{8}$ -inch, \$6;  $\frac{1}{2}$ -inch, \$8.50; jack iron, single, per dozen yards, 15c. to 75c.; double, 25c. to \$1; trace-chains, per dozen, \$5.25 to \$6.

**Dynamite.**—\$11 to \$13 per case.

**Hair.**—Plasterers', 80 to 90c. per bale.

**Hinges.**—Heavy T and strap, per 100 lbs., \$6 to \$7.50; light, do., 65 per cent.; screw hook and hinge, 6 to 10 inches, 5 $\frac{1}{2}$ c. per lb.; 12 inches up, per lb., 4 $\frac{1}{2}$ c.

**Galvanized Iron.**—Apollo, 10 $\frac{1}{4}$ , \$4.90; 28, \$4.70; 26, \$4.30; 22, \$4.10; 24, \$4.10; 20, \$4; 18, \$3.95; 16, \$3.90; Queen's Head, 28, \$4.90; 26, \$4.70; 24, \$4.30; 22, \$4.30; 20, \$4.10 per cwt.

**Iron.**—Swedish iron, 100 lbs., \$4.75 base; sheet, black, 14 to 24 gauge, \$3.75; 24-gauge, \$3.90; 26-gauge, \$4; 28-gauge, \$4.10. Galvanized—American, 18 to 20-gauge, \$4.40; 22 to 24-gauge, \$4.65; 26-gauge, \$4.65; 28-gauge, \$4.90; 30-gauge, \$5.15 per 100 lbs. Queen's Head, 22 to 24-gauge, \$4.65; 26-gauge English, or 30-gauge American, \$4.90; 30-gauge American, \$5.15; Fleur de Lis, 22 to 24-gauge, \$4.50; 28-gauge American, \$4.75; 30-gauge American, \$5.

**Lead Wool.**—\$10.50 per hundred, \$200 per ton, f.o.b. Toronto.

**Lumber.**—No. 1 pine, spruce, tamarac, British Columbia fir and cedar—2x4, 2x6, 2x8, 8 to 16 feet, \$26.00; 2x20 up to 32 feet, \$36.50.

**Nails.**—\$4 to \$4.25 per 100. Wire base, 2.85; cut base, \$2.90.

**Picks.**—Clay, \$5 per dozen; pick mattocks, \$6 per dozen; clevises, 7c. per lb.

**Pipe.**—Iron, black, per 100 feet,  $\frac{1}{4}$ -inch, \$2.50;  $\frac{3}{8}$ -inch, \$2.80;  $\frac{1}{2}$ -inch, \$3.40;  $\frac{3}{4}$ -inch, \$4.60; 1-inch, \$6.60; 1 $\frac{1}{4}$ -inch, \$9; 1 $\frac{1}{2}$ -inch, \$10.75; 2-inch, \$14.40; galvanized,  $\frac{1}{2}$ -inch, \$4.25;  $\frac{3}{4}$ -inch, \$5.75; 1-inch, \$8.35; 1 $\frac{1}{4}$ -inch, \$11.35; 1 $\frac{1}{2}$ -inch, \$13.60; 2-inch, \$18.10. Lead, 6 $\frac{1}{2}$ c. per lb.

**Pitch.**—Pine, \$6.50 per barrel; in less than barrel lots, 4c. per lb.; roofing pitch, \$1 per cwt.

**Plaster.**—Per barrel, \$3.

**Roofing Paper.**—60 to 67 $\frac{1}{2}$ c. per roll.

**Rope.**—Cotton,  $\frac{1}{4}$  to  $\frac{1}{2}$ -in. and larger, 23c. lb.; deep sea, 16 $\frac{1}{2}$ c.; lath yarn, 9 $\frac{1}{2}$  to 9 $\frac{3}{4}$ c.; pure Manila, per lb., 13 $\frac{1}{2}$ c.; British Manila, 11 $\frac{1}{2}$ c.; sisal, 10 $\frac{1}{2}$ c.

**Spikes.**—Basis as follows:—1 $\frac{1}{4}$  x 5 and 6, \$4.75; 5-16 x 5 and 6, \$4.40;  $\frac{3}{8}$  x 6, 7 and 8, \$4.25;  $\frac{1}{2}$  x 8, 9, 10, and 12, \$4.05; 25c. extra on other sizes.

**Steel Plates, Rolled.**—3-16-in., \$3.35 base; machinery, \$3 base; share, \$4.50 base; share crucible, \$5.50; cast share steel, \$7.50; toe calk, \$4.50 base; tire steel, \$3 abse; cast tool steel, lb., 9 to 12 $\frac{1}{2}$ c.

**Staples.**—Fence, \$3.40 per 100 lbs.

**Timber.**—Rough, 8 x 2 to 14 x 16 up to 32 feet, \$34; 6 x 20, 8 x 20, up to 32 feet, \$38; dressed, \$37.50 to \$48.25.

Coal.—8 $\frac{1}{2}$  to 15c. per pound.