

A Community School

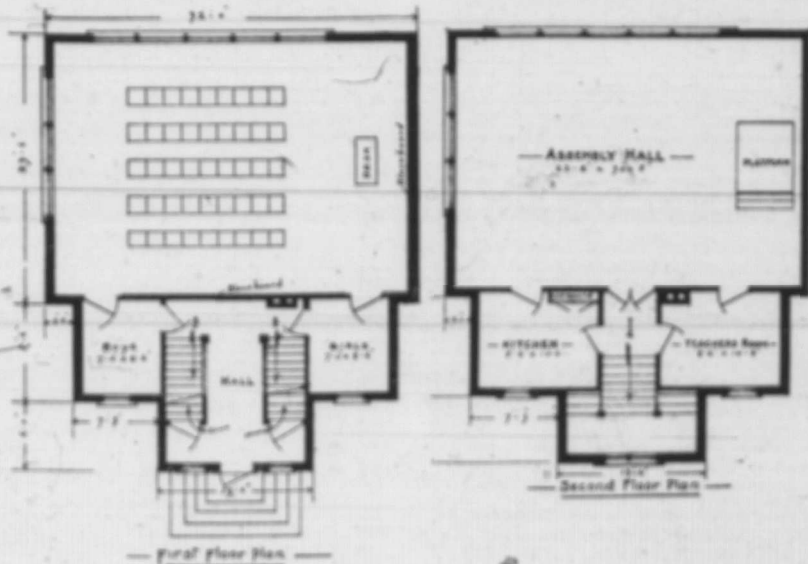
A Building that will Serve both as Schoolhouse and Community Center

It was not with the needs of juvenile education alone in mind that this building was designed for the use of rural school boards. The Guide has always been deeply interested in promoting the community spirit in rural districts, and the natural focus for that community life is the public school building. So this one-roomed school was designed with a hall which is accessible from the vestibule, making it possible for meetings to be held in the building without interfering in any way with the school proper.

This was done because the school room is not a suitable place for such gatherings. All but the larger desks are thoroughly uncomfortable for adults to sit in and the school books are apt to get lost or destroyed. But the greatest objection to using the school room for public gatherings is the hopelessly dirty condition in which it is almost invariably left. Cake and pie plastered about

of refreshments. As it was necessary to economize space as much as possible this kitchen is very tiny but there is a built-in cupboard between it and the hall, and above the lower part of this cupboard is a counter where trays can be filled, for the waiters to carry away, without entering the kitchen at all. It is thought that this one feature will add greatly to the convenience of serving refreshments to large gatherings.

In order, too, that this hall may not be altogether waste space except on such special occasions, this cupboard has been built to open both ways, so that it can be fitted out with domestic science equipment and used in the teaching of this subject, or the holding of public demonstrations. At the other end of the hall is a similar cupboard planned to hold tools and supplies for manual training, and there is a closet at this end of the room where the benches can be piled when not in use.



the room and mixed with tobacco juice, is not a very inspiring sight for the teacher and pupils, in the cold grey dawn of the morning after.

Hall for Meeting

So a hall has been added with a kitchen at the end for the preparation

It is planned to have sanitary closets in the basement, to which separate entrances have been arranged.

Equipped with good blackboards, individual desks, a full set of maps and globes and a first class library this would make a model school building for any rural community.

SANITARY EQUIPMENT

Practical Sewage Disposal Without Water or Sewer. Inexpensive to Operate, Absolutely Odorless. The Unsanitary Outhouse Need No Longer Be Tolerated.

It provides the same convenience, comfort and privacy as does an up-to-date water toilet. Sold under a strong guarantee. Endorsed by Medical Officers and Boards of Health throughout the country. Free plans and specifications furnished by our Engineering Dept.

Write us for Illustrated Catalogue

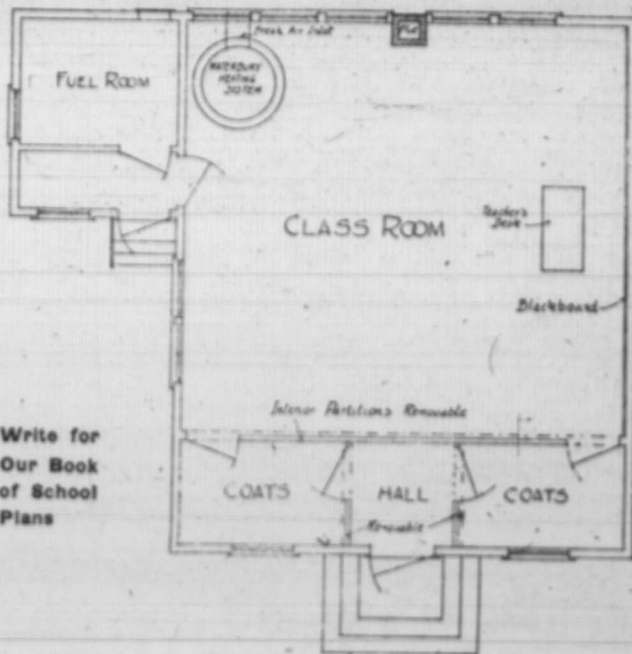
KAUSTINE CO. OF WESTERN CANADA

709 MERCHANTS BANK, WINNIPEG

THE KAUSTINE SUPPLY CO.
OF ALBERTA
P.O. Box 190, Lethbridge, Alta.

HARRIS ENGINEERING CO.
Regina, Sask.

Free School Plans



Write for
Our Book
of School
Plans

School Trustees may secure without charge complete Blueprints, Specifications in details, and an Itemized List of Actual Quantities required to construct any one of our 300 School Buildings.

NO EXTRAS

NO WASTE

NO WORRY

Because you have the benefit of the experience of Hundreds of Boards of Trustees who have actually built by these plans.

The Waterman-Waterbury Mfg. Co. Ltd.
REGINA - - - SASK.

WANTED

Live, Energetic Agents

for a new and progressive Life Assurance Company whose policies are based on the

SCIENTIFIC SYSTEM

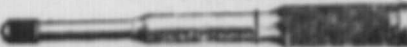
and are therefore easy to sell. We tell you of our 15 powerful reasons why our policies are superior to others.

Do YOU Want a Profitable Agency? Write us for particulars.

The Northwestern Life Assurance Co.
Canada's Only Scientific Life Company

BANK OF MONTREAL BUILDING, WINNIPEG

The author of "The Farmer and The Interests" says, "When I homesteaded on the prairie 33 years ago, the farmer got just about half of the value of his production. If he produced \$700 worth from a quarter section of land he retained \$350. Today he retains about 35 per cent." He then gives the remedy for this condition of affairs. 75c postpaid.—Book Dept., Grain Growers' Guide, Winnipeg.



Free—Mr. Punch Automatic Drill

It works by a spiral twist. You simply place the drill point and push the handle backwards after each stroke. In the handle there are eight points of different sizes. Each size is contained in a compartment by itself, and the number is printed over the hole in which it is contained. As shown in the illustration. The drilling price range is also from 1-16 to 11-64 of an inch. This useful tool will be sent free and postage prepaid to anyone who will collect four yearly subscriptions (new or renewal) to The Grain Growers' Guide, at \$1.50 and send the money collected and the names and addresses of the subscribers to The Guide office, or, if you can collect a two-year subscription at \$3.00, it will count the same as two yearly subscriptions. Mail your subscription to—

Circulation Department
GRAIN GROWERS' GUIDE, WINNIPEG

WHEN WRITING TO ADVERTISERS
PLEASE MENTION THE GUIDE

BUY YOUR LUMBER

And Building Materials Now
Before the Market Advances

G.O.G. Lumber is shipped direct from the mill to you. No expensive extra handling—no middle profit. Our grades are absolutely guaranteed to be what the customer asks for. If you do not require a carload, join with your neighbor and get the benefit of carlot prices. We can supply everything needed in a building, from draughting the plans to the last piece of interior trim. We supply barn equipment, also heating and electric-lighting plants. No order too small for too big for us to handle.

Send for the new G.O.G. Lumber and Building Supply Catalog—just out. It's FREE.

The Grain Growers' Guide
Agency at:
New Westminster,
British Columbia

Branches at:
REGINA, SASK.
CALGARY, ALTA.
FT. WILLIAM, ONT.

Grain Co. Ltd.
HEAD OFFICE Winnipeg, Man.