

Capitol Cylinder Oil

For Steam Traction Engines
and Steam Plants



Delivers more power, and makes the engine run better and longer with less wear and tear, because its friction-reducing properties are exactly fitted to the requirements of steam traction engines and steam plants.

**Traction Engines,
Wagons, Etc.**

Mica Axle Grease makes the wheel as nearly frictionless as possible and reduces the wear on axle and box. It ends axle troubles, saves energy in the horse, and when used on axles of traction engines economizes fuel and power.

**Reapers,
Threshers,
Plows, Harrows**

Granite Harvester Oil insures better work from the new machine and lengthens the life of the old. Wherever bearings are loose or boxes worn it takes up the play and acts like a cushion. Changes of weather do not affect it.

**Gasolene
and
Kerosene
Engines**

Standard Gas Engine Oil is the only oil you need. It provides perfect lubrication under high temperatures without appreciable carbon deposits on rings or cylinders, and is equally good for the external bearings.

Every dealer everywhere. If not at yours, write for descriptive circulars to

The Imperial Oil Company, Limited

The right protection

You ought to have roofs made of the real, natural waterproofer—Trinidad Lake asphalt—for every building on your farm.

Genasco Ready Roofing

is made of Trinidad Lake asphalt. It protects against rain, snow, sun, air, heat, cold, and fire because it doesn't crack, rot, rust, or blow off; and it lasts longer than any other roofing. That's the roofing that saves you time, labor, and money.

Easily applied by any intelligent farm-hand. Write for samples and the Good Roof Guide Book. Ask your dealer for Genasco, and look for the hemisphere trade-mark. Mineral or smooth surface. A written guarantee—if you think it necessary.

THE BARBER ASPHALT PAVING COMPANY

Largest producers of asphalt, and largest manufacturers of ready-roofing in the world.

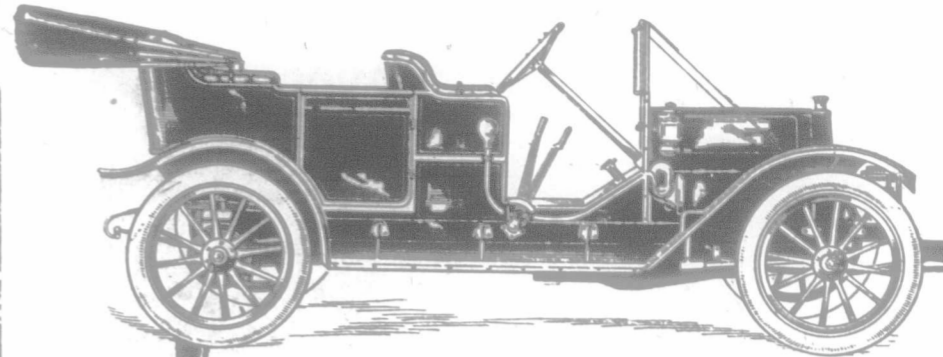
PHILADELPHIA

New York San Francisco Chicago



Cross-section, Genasco Smooth-surface Ready Roofing
Trinidad Lake Asphalt
Asphalt saturated Wool Felt
Trinidad Lake Asphalt

F. H. McGAVIN CO., LTD., WINNIPEG, MAN.



THE CAR FOR COMFORT

Dominion \$1850 Limited

Special attention has been given to the important feature of comfort in the building of the Dominion "Limited."

You know how important it is to select an easy-riding car, and how many an auto trip is spoiled because of the jolts and jars given the passengers.

On the Dominion "Limited," we have worked out a perfectly balanced spring suspension. Long, flexible, full scroll elliptic springs in the rear, two inches wide, and in the front, semi-elliptic, take out all jolts and jars.

The powerful, four-cylinder motor works perfectly without noise or vibration, relieving the passengers of the annoyance of a jerky, shaky engine.

The wheel base is long, the frame low, and the wheels are large, all of which factors count greatly in securing that even, gliding sensation that makes motoring a pleasure.

The seats are heavily upholstered with finest leather, and there is plenty of foot-room for passengers, both front and rear. The rear seat is very wide, and will hold three passengers with comfort and convenience to each. There is room in the tonneau for an extra folding seat, if desired.

A Fine Opportunity for Dealers

The Dominion line is fast becoming the best selling line of cars in the country. We would be pleased to hear from live, progressive dealers who wish to handle the Dominion line in their vicinity. Write us for terms and details.

DOMINION MOTORS, Limited

38 DOMINION BOULEVARD

WALKERVILLE - ONTARIO

We also manufacture motor cars for commercial purposes.

THE CANADIAN BANK OF COMMERCE

HEAD OFFICE, TORONTO

CAPITAL, \$10,000,000 REST, \$6,000,000

B. E. WALKER, C.V.O., LL.D., President ALEXANDER LAIRD, General Manager
A. H. IRELAND, Superintendent of Branches

BRANCHES IN EVERY PROVINCE OF CANADA AND IN
THE UNITED STATES AND GREAT BRITAIN

BRANCHES IN SASKATCHEWAN

BRODERICK	LASHBURN	REGINA
CANORA	LLOYDMINSTER	SASKATOON
DELISLE	MELFORT	SHELLBROOK
DRINKWATER	MELVILLE	TUGASKE
ELBOW	MILESTONE	VONDA
ELFROS	MOOSE JAW	WADENA
HAWARDEN	MOOSOMIN	WATROUS
HERBERT	NOKOMIS	WATSON
HUMBOLDT	NORTH BATTLEFORD	WEYBURN
KAMSACK	OUTLOOK	WILCOX
LANGHAM	PRINCE ALBERT	YELLOWGRASS
LANIGAN	RADISSON	

FARMERS' BANKING

Every facility afforded Farmers and Ranchers for the transaction of their banking business. Notes discounted and sales notes collected.

ACCOUNTS MAY BE OPENED AND CONDUCTED BY MAIL
A GENERAL BANKING BUSINESS TRANSACTED