

BOOKS

Suitable for Easter Gifts

Cold Dust - Daily Food - Kept for the Masters' Use - Words of Comfort and Hope.

Each in a neat box (32 mo) in white and gold or purple and silver. Each 35c.

Daily Strength for Daily Needs.

White and gold covers (boxed), \$1.25. White and red covers, \$1.00.

Daily Light on the Daily Path

A Devotional Text Book for every day in the year. Cloth, 32mo, 75c.; leather, 32mo, 80c.; leather, boxed, \$1.25.

Daily Round.

Leather (clear type), \$1.50, \$2, \$2.50 each.

Holy Living or Dying.

Cloth, 35c., \$1.35, \$2.50.

Christian Year.

Leather, 50c., \$2, \$2.25, \$3.75.

Imitation of Christ.

Cloth, 35c., ornamental cover, 50c.; white and gold, leather, 75c.

The Changed Cross.

And other religious Poems. Cloth, 35c.; Leather, \$1.

Pressed Flowers from the Holy Land.

Gathered and pressed in Palestine by Rev. H. B. Greene. 50c.

Book Marks.

Printed on satin, 20c. Also

Purple and White Ribbon

With silver heart, anchor and cross. 60c. each.

Bannerettes.

Very dainty designs. The following are the titles of a few :-

- "The Twenty-Third Psalm."
- "The Voice of Jesus."
- "Lean Hard."
- "Baby's Smile."
- "Nearer my God to Thee."

Any of the above books sent prepaid on receipt of price.

The Church of England Publishing Co., Limited,
CHURCH BOOK ROOM.
17 Richmond St. West, Toronto

Edgehill, Church School for Girls WINDSOR, NOVA SCOTIA Incorporated 1891.

The Bishop of Nova Scotia, Chairman Board of Trustees.
Miss Lefroy, of Cheltenham Ladies' College, England, Principal.
Nine Resident Experienced Governesses from England. Housekeeper, Matron and Nurse.
Board and Tuition Fees, including French, Latin or German or Greek, Daily Callisthenics, Class Singing and Needlework. \$225 per annum, or \$75 per term.
Music, Singing, Painting, Drawing, &c., are extras. Preparation for the Universities.
Easter term begins Wednesday, March 27th, 1901.
For Calendar apply to DR. HIND.

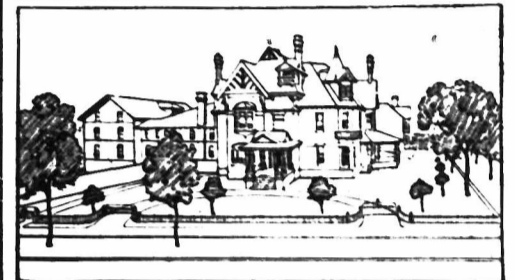
RIDLEY COLLEGE

ST. CATHARINES, ONT.

A Canadian Church School for Boys. The new Preparatory School for Junior Boys is now in full operation.
For calendar and full information apply to REV. J. O. MILLER, M.A., Principal.

Hellmuth Ladies' College

LONDON, ONT. CIRCULARS



St. Margaret's College, TORONTO

A Boarding and Day School for Girls. For Prospectus apply to MRS. GEORGE DICKSON, Lady Principal

Church - - Extension Association

341 Spadina Avenue, Toronto

Open daily from 2 p.m. to 6.00 p.m. Saturdays 9.00 to 9.30. Surplices made to order from \$3 up. Garments for Men, Women and Children, new and second-hand, at low prices. Orders taken for all kinds of Church needlework Also Books, Publications, Sacred Pictures.

IN MEMORIAN TABLETS

Our specialty is memorial brass work, tablets, lecterns, pulpits and collection plates. Altar rails, &c.

The Keith & Fitzsimmons Co., Ltd.
111 King West, Toronto.

LUXFER
Electro-glazed
Church Windows
Decorative Glass.
Write for prices
LUXFER PRISM Co. Limited
100 King W. Toronto.

The Yorkville Laundry

45 ELM STREET

H. D. PALSER, Proprietor
Telephone 1580
ALL HAND WORK



"Glen Mawr" MISS VEALS' SCHOOL 651 SPADINA AVE. TORONTO.

Art, Music, Matriculation & General English Courses
EARNEST, PROGRESSIVE, THOROUGH.

Rolleston House,

170 Bloor St. West, Toronto
Resident and Day School for Girls. Pupils prepared for the Universities.

Re-Opens Monday, Jan. 14th, 1901
For Prospectus apply to MRS. NEVILLE.
Easter Term begins Monday April 15th, 1901.

Bishop Strachan School for Girls

President - The Lord Bishop of Toronto
Preparation for the Universities and also Elementary work.

Apply for Calendar to
MISS ACRES, Lady Principal,
Wykeham Hall, Toronto.

Bishop Bethune College, Oshawa, Ontario

UNDER THE CHARGE OF
The Sisters of St. John the Divine
Visitor, the Lord Bishop of Toronto.

For terms and particulars apply to the
SISTER IN CHARGE, or to
The Sisters of St. John the Divine
MAJOR STREET, TORONTO

Lent Term begins 10th February, 1901.

The Harding Hall Girls' School

Limited, London, Ont.
Residential and day school; Matriculation and Preparatory courses.
For Prospectus apply to
MRS. J. E. WELLS.

CHURCH WINDOWS
SIMPLE & ORNATE.
MEMORIALS
A SPECIALTY.
MCCAUSLAND
TORONTO

FAVORABLY KNOWN SINCE 1826. BELLS
HAVE FURNISHED 25,000
CHURCH, SCHOOL & OTHER
G. MENEELY & CO. PUREST BEST
WEST-TROY, N. Y. GENUINE
BELL-METAL
CHIME & Etc. CATALOGUE & PRICES FREE

GEO. W. COOLEY

Importer of 567 Yonge St

High-Class Wines & Spirits for Medicinal use.

Telephone 9089. Sacramental Wine

TO OUR READERS

We ask our readers before making purchases to kindly look through our advertising columns with a view of purchasing from those houses who advertise with us, and when writing or ordering please mention The Canadian Churchman.

JONES AND WILLIS

Church Furniture Manufacturers
Metal, Wood, Stone and Textile Fabrics.
STAINED GLASS ARTISTS
43 Great Russell Street, LONDON, ENG.
Opposite British Museum.
Also at Birmingham and Liverpool

Toronto Stained Glass Works...

FAIRCLOTH & CO.
301 Yonge St., Toronto.
Ornamental Stained Glass for Churches and Private Dwellings.
Designs furnished. Prices low.

STAINED GLASS
MEMORIAL :::
::: WINDOWS
BRASSES AND DECORATIONS
Castle & Son
20 UNIVERSITY ST., MONTREAL

CHURCH BRASS WORK

Eagle and Rail Lecterns, Altar Vases, Ewer Candelsticks, Altar Desks, Crosses, Vesper Lights, Altar Rails, etc. Chandelier and Gas Fixtures.

CHADWICK BROTHERS
(Successors to J. A. Chadwick)
MANUFACTURERS
182 to 190 King William St. HAMILTON, ONT.

HARRINGTON'S
TUBULAR
CHIME BELLS
Lighter in Weight,
Sweeter in Tone,
Cheaper in Price,
than the Ordinary Bell.
COVENTRY, ENG.
Castle & Son
20 University St.
Montreal & Toronto

St. Augustine Wine

\$1.50 per Gallon
Direct Importer of High Grade Foreign Wines, &c.
All goods guaranteed pure and genuine.

J. C. MOOR 433 Yonge Street Toronto. Tel. 625

Church Brass Work
MEMORIAL BRASSES
RAILS VASES
PRITCHARD ANDREWS
CO. OF OTTAWA, LIMITED
133 Sparks St. OTTAWA

Now Is the time to subscribe for THE CANADIAN CHURCHMAN.

C
VOL. 27
A COI
BERE
348
THE I
THI
A picture w
stood. The
paper or the
r write.
MOORE & J
Can. Photo
Bureau, 16
St. West.
COW
Sold in 4 lb.
A
The Long
Christi
Patron -
The Chur
Gospel to the
Employs
- Education
- created sup
The Chil
A happil
the young i
gelization.
All cont
diocesan tre
Informat
FIRS
Stand.
Phone 2
DR
I am i
the home
at a much
If you ar
ticulars.
passed in
I also
known, t
without f
Absolu
Adc
Room 6, 1