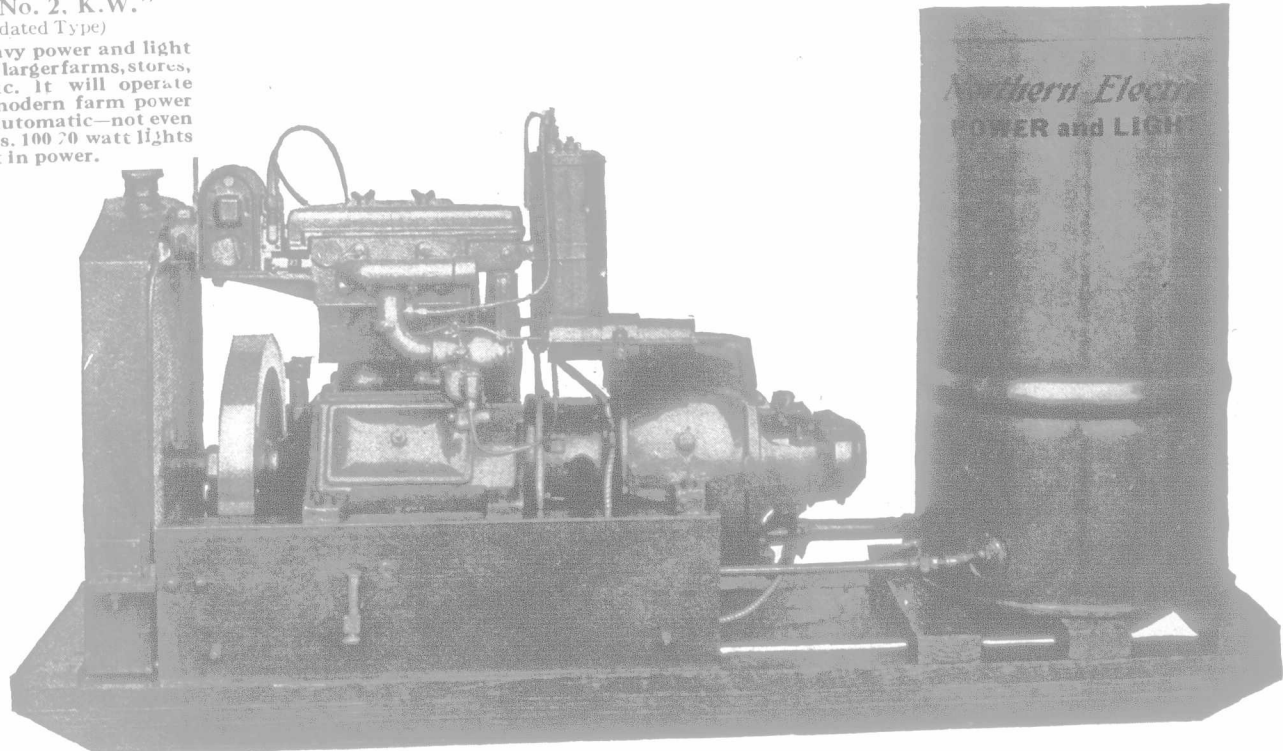


"MODEL No. 2. K.W."
(Consolidated Type)

Designed for heavy power and light work required by larger farms, stores, small hotels etc. It will operate practically all modern farm power requirements. Automatic—not even a button to press. 100 70 watt lights or its equivalent in power.



Drudgery on the Farm is like Autocracy to the World

—both are unnecessary evils. Drudgery is a menace to progress, a hindrance to liberty, and invariably responsible for the young folks quitting the farm. Now is the time to end drudgery and now is the time to investigate—

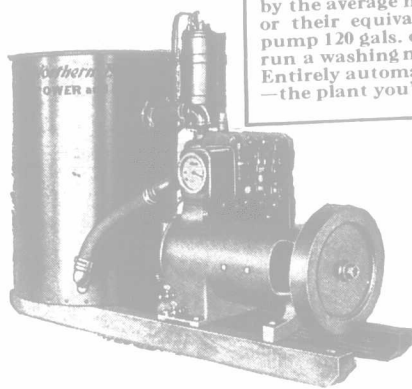
Northern Electric POWER and LIGHT

Learn what Northern Electric Power and Light can do for you; how electricity, properly and economically developed, will shake off the veil of drudgery that surrounds and isolates your farm. As your helper Northern Electric Power and Light will free you from many daily drudgeries. It will afford you plenty of time to study crops and stock; increases your earning power—all at a surprisingly low cost.

Farmers all over Canada are lighting their homes and out-buildings with Northern Electric Power and Light, operating water systems, milking machines, cream separators, grinders, etc. The womenfolks love electricity because it is so clean, because it saves time and work. They employ it to do their domestic chores such as operating washing machines, sewing machines, vacuum cleaners, toasters, fans, etc. Electricity on the farm is as practical as it is economical, aside from the comfort and convenience it brings.

"No. 1, NORTHERN"
(Consolidated Type)

Gives all the light and power needed by the average home—15 to 20 lights or their equivalent in power. Will pump 120 gals. of water per hour or run a washing machine, churn, etc. Entirely automatic in its operation—the plant you've been waiting for.



About the System

Northern Electric Power and Light is entirely automatic and guaranteed absolutely reliable. Like a good hired man, it starts when there is work to be done and stops only when the work is finished—plenty of power, plenty of light. Not even a button to press nor any thought nor care, excepting an occasional oiling and replenishing fuel. There is a Northern Electric Power and Light for every requirement; all types, all sizes, either direct connected or belt driven. From 15 to 1000 lights, or their equivalent in electric power for farm work. You will surely be interested in Northern Electric Power and Light. Valuable literature will be gladly sent free for the asking.

Investigate and then decide

Northern Electric Company LIMITED

Makers of The Nations Telephones

MONTREAL
HALIFAX
OTTAWA

TORONTO
LONDON
WINNIPEG

REGINA
CALGARY
VANCOUVER

FILL IN THIS COUPON AND RETURN TO

Northern Electric Company LIMITED L. F. A. 109
(address nearest house)

Dear Sirs,

I want to know more about Northern Electric Power and Light. Please send me further particulars and literature, on the understanding that I in no way obligate myself to purchase.

Name

P. O. Address

County..... Prov

St., West
1918
ter to
s of
awn to the
driving the
ed. After
ing up the
nd feasible
e car, and
ng. Also,
developed
d only run
ce, and in
erials, but
e first two
satisfactorily,
earn to do
is machine
hed or de-
the engine
5-inch face
nor which
er you can
gh to run
n the farm
and prove
e you that
day if you
s a chance
n to prove
CHMENT OFF
E NUMBER ON
ust
ING
strong,
Lbs.
70
70
70
70
70
ces with
; Third
\$2.00.
ronto