

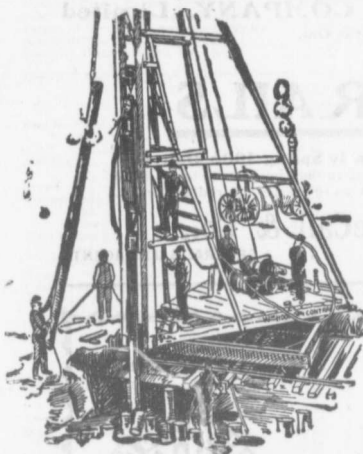
The Canadian Bridge Co., Limited

WALKERVILLE, ONT.

MANUFACTURERS OF

RAILWAY AND HIGHWAY BRIDGES

Locomotive Turn Tables,
Roofs, Steel Buildings and
Structural Iron Work of all descriptions



PILE DRIVING

Land or water by Steam Pile Drivers or Drop Hammers.

Portable Boilers
Hoisting Engines
Pumping Machinery

TO LET

Bridge Building, Trestle Work, Wharves,
Dams, Diving Submarine Work and
General Contracting.

WM. HOOD & SON

10 Richmond Sq. - MONTREAL

The Ontario Accident Insurance Co.

ACCIDENT, EMPLOYERS, ELEVATOR
AND GENERAL LIABILITY

104 St. Francois Xavier St. Montreal

DEBENTURES

Municipalities contemplating the issue of
Debentures will find it to their advantage
to communicate with

G. A. STIMSON & CO.

Investment Dealers
24 and 26 King St. W. TORONTO

HEADQUARTERS FOR

Pig Lead, Pig Tin, Solder,
and Manganese Anti-
Friction Babbitt Metal.

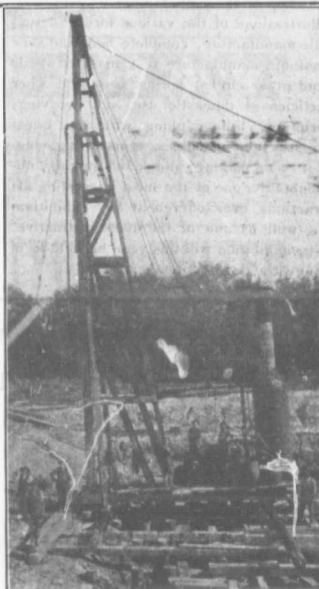
Syracuse Smelting Works
Montreal, Que.

M. BEATTY & SONS

WELLAND, ONT.

Dredges, Ditchers, Derricks, Steam
Shovels, Submarine Rock Drilling
Machinery, Mine Hoists, Hoisting
Engines, Centrifugal Pumps for
Water and Sand, Contractors'
Machinery, Stone Derricks, Clam
Shell Buckets, Coal Tubs, Concrete
Tubs.

Please mention this paper when cor-
responding with advertisers.



PILE DRIVING

and Foundation Work.

By 5-ton Automatic Steam Pile Hammer,
Water Jet or Drop Hammers, Dock Build-
ing, Submarine Work and Dredging.

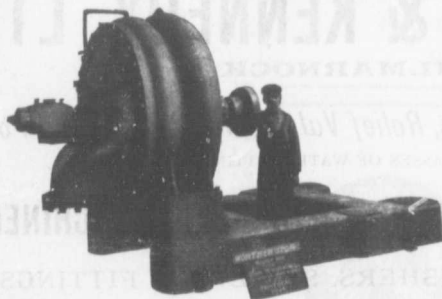
BUILDING MOVER AND WRECKER

General Contracting.

JNO. E. RUSSELL, - Toronto
908 Queen St. E. - Phone M. 2007.

WORTHINGTON PUMPS

FOR WATER WORKS SERVICES



"WORTHINGTON" TURBINE PUMPS

for heads up to 2,000 feet, are
Reliable, Durable, Efficient
and exceedingly simple

WE ALSO MANUFACTURE

Boilers, Tanks, Filters
Etc.

Worthington 2 Stage Turbine Pump for the Winnipeg
Water Works, Capacity 5,000,000 per 24 hours.

We Have Two Stage Pumps in Operation Delivering Against 160 Pounds Pressure

The John McDougall Caledonian Iron Works Co.,

ESTABLISHED 1852

Montreal.

Limited.