

CITY OF CHATHAM

WHAT CHATHAM IS

Chatham is the county town of Kent.* It is the geographical and commercial centre, not merely of the county, but also of a large area of territory adjacent to Kent. Situated on the Thames, served by six railway lines, the centre of a rich agricultural district, it is the chief shipping point of a populous and prosperous territory. Natural gas, secured from the Tilbury East gas field a few miles distant, provides cheap power for manufacturers, and cheap fuel. Residentially, Chatham, the Maple City, is an ideal place for a home. Its population is 12,039—and growing. The year 1912 saw an increase of nearly 1000. The assessment is \$7,295,444. Last year's increase in assessment was \$1,749,656.

WHY MANUFACTURERS LOCATE IN CHATHAM

In recent years, many outside manufacturers have established Canadian branches in Chatham. There are reasons—plenty of them—why Chatham, Ontario, should be favored as a factory site.

There are reasons, too, why the number of Chatham factories must continue to increase. Canada is a rapidly growing country. Its purchasing power is steadily increasing. At the present rate of progress, Canada will grow one hundred per cent. in the next decade. Manufacturers—both British and American—will inevitably find it profitable to establish Canadian branches in order to serve this growing population in the most convenient and economical way.

For such branch factories, Chatham is a logical site.

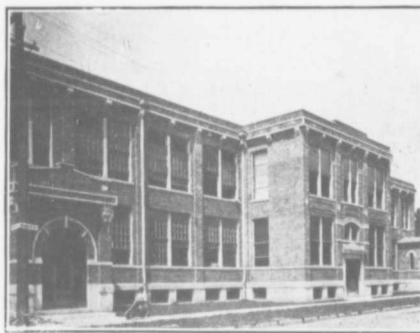


The Wm. Gray-Sons-Campbell, Limited, Carriage Factory

CHEAP POWER FOR MANUFACTURING.

An unlimited supply of natural gas, piped from the largest gas fields in Ontario, is available for Chatham manufacturers at 12 cents per 1000 cubic feet. With gas at this price, power can be generated at the rate of \$1.20 per 100 horse power for 10 hours.

An auxiliary power supply is ensured from the



American Industries Establish Branches Here.

Ontario Hydro-Electric system, which will be extended to Chatham in the course of the present year. This provides electric power from Niagara Falls at the actual cost of production and distribution.

Rondeau harbor, a few miles to the south, is one of the greatest coal depots in Ontario, ensuring to Chatham manufacturers, if they so desire, coal at the minimum of cost.

SPLENDID RAILWAY FACILITIES

Six lines of railway, five steam and one electric, provide cheap, quick and easy transportation facilities with all outside points. These railways include five trunk lines—the Grand Trunk, Canadian Pacific, Wabash, Michigan Central, and Pere Marquette. The Pere Marquette (north and south line) and the Chatham, Wallaceburg & Lake Erie electric line, connect all the steam roads and tap a populous and productive country territory.

The Canadian Northern (Western Ontario branch) and the Ontario Hydro-Electric radial line, both planned for early construction have been surveyed through Chatham, and will also serve our manufacturers.