

A Great New Industry Drawing Its Supplies from Farming Areas.
Just a little over three years ago this model plant at New Toronto started operations, packing Campbell's soups, pork and beans, spaghetti and tomato juice. It contains 112,000 sq. ft. of floor space, gives employment to 125 operatives and supports through its purchases many hundreds of the rural population,—a valuable addition to Canada's industrial organization.

rented premises ten years ago. Since then they have purchased a factory conveniently located and have spread their activities to the extent of using three times the floor space which they formerly rented. They have constantly improved their equipment with a view to improving their product and cutting the cost of production.

The E. B. Eddy Company Limited, Hull, paper manufacturers, report that during the ten years ended Dec. 31, 1933, they have expended \$3,636,000 in additions to and replacements of plant and equipment. Principal expenditures in their chronological order have been—new newsprint mill; renovation of sulphite mill; new steam plant; new plant railway line; relocation of tissue department; renovation of two specialty paper machines; new filtration plant; renovation of one specialty paper machine. In addition there have been continuous replacements of old types of equipment by modern machinery. During 1934, as well as continuing with replacements, work has been done on the modernization of the sulphite mill.

Ferranti Electric Limited, Mount Dennis, Toronto, erected in 1929 a complete new manufacturing plant at a cost, complete with equipment, of approximately \$400,000. The plant is carefully laid out to provide every modern facility for the manufacture of pole type and power transformers required by the steadily increasing use of electric energy. At the time the new plant was built they replaced considerable equipment. They have

provided testing and treating facilities for handling and purifying tank car quantities of transformer oil; vacuum and pressure impregnating tanks for the improved insulation of transformer coils, together with special baking and drying ovens for varnish treatment, and separate electrically heated vacuum and pressure equipment for compound treatment of coils. They have also provided up-to-date automatic winding machines; a special 350,000-volt testing transformer; improved machinery for tank making, etc.

Although expansion has been almost constant since they began operations twenty-five years ago, additions to the H. J. Heinz Company food plant at Leamington, Ont., in the past year were larger and more important than those completed in the preceding decade and it continues to hold the record as the world's largest tomato ketchup establishment. Its first product was pickles, which were made for a domestic market, but today a long list of foods are being produced for export as well as consumption in the Dominion. A building was recently completed for making vinegar. Another recent completion was a building that enlarges kitchen, filling and raw products receiving facilities. The erection of these structures called for the installation of additional equipment, while replacements have been on an important scale.

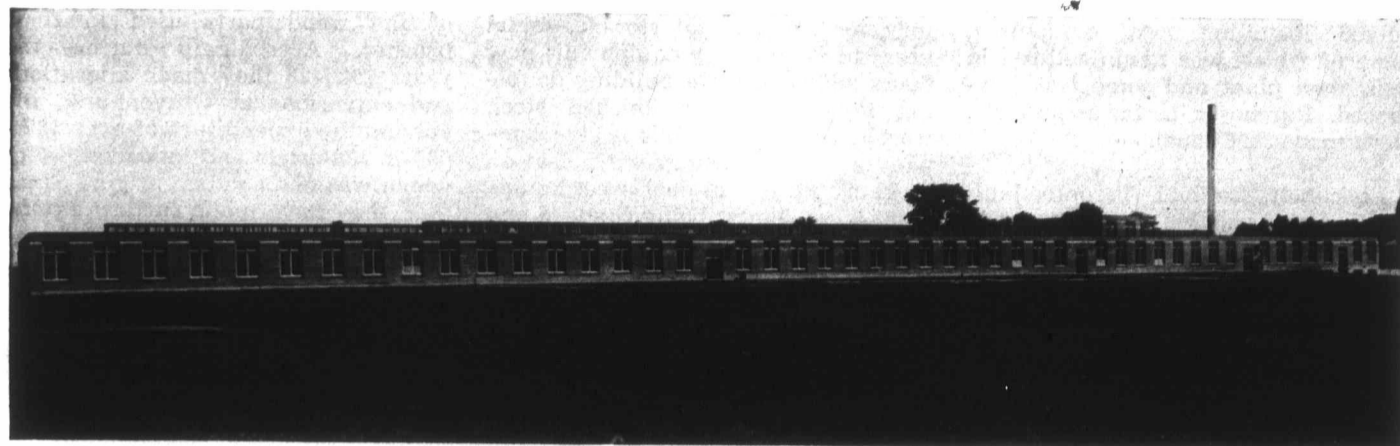
The Galt Art Metal Co. Limited, Galt, report that during the last ten years they have made two extensions to their plant, giving them double the

capacity they previously had. They have placed new machinery and equipment in these additions and have added several new products to their line of manufactures.

Norton Company of Canada Limited, Hamilton, manufacturers of grinding wheels and grinding machines, have increased their facilities several times during the last few years, the most important addition being one constructed in 1929 for the manufacture of Norton pulpstone in Canada. These stones are now in very general use in the newsprint manufacturing industry. The company are continually adding new equipment in an effort to improve their products generally and particularly in connection with one or two new products.

American Can Company, Hamilton, have made considerable progress during the past decade. They have erected a large modern factory at Simcoe, Ont., to take care of the requirements of the canning industry and have converted their Niagara Falls factory from a can factory to an equipment plant, making machinery and parts for closing machines in service in Canada. This factory also makes can-making equipment for the company's own use. In the same period large additions have been made to the Vancouver and Montreal factories, new and additional equipment being installed.

Canadian Bronze Powder Works Limited have recently added two one-storey buildings to their plant at Valleyfield, Que., which is the only indus-



A Recent Addition to the Canadian Textile Industry.
The unique looking plant of Powdrell & Alexander of Canada Limited at Cornwall, Ont. In it the company manufacture fine marquisettes, voiles and scrims. Normally 240 people are employed, the number being increased about 20 per cent during the last eight or ten months. The company started operations in August, 1933, with 250 looms and are an interesting and valuable addition to Canada's manufacturing capacity.

try in the British Empire making bronze powder. These are being used for polishing and sifting rooms and will give the plant additional production. They have also remodelled their entire plant, putting in new switchboards and installing new boilers and are now in a position to increase their production from 20 to 25 per cent. This will mean a gradual increase in the number of their employees.

Canadian Westinghouse Company Limited, state that while they have not erected any new buildings during the past few years, they have spent close to half a million dollars on installing a very large amount of new machine tool and manufacturing equipment for the manufacture of refrigerators, electric ranges and washing machines. They are continually replacing out of date equipment with new tools, etc., to improve their products.

Canadian Cannery Limited, Hamilton, have made numerous additions and expansions during the past ten years. Their chief expansion has been in the Province of Quebec, where they have built two new factories and remodelled two others. During the past year they have erected a new sawmill in Pembroke to take care of their shook requirements. Throughout the depression the Pembroke Shook Mills, a fully-owned subsidiary, was the only industry in Pembroke that operated continuously. It employs from 100 men in summer to 200 in the winter months.

Canadian Ingersoll-Rand Co. Limited, Montreal, state that on account of the large building extensions made during the war they have not since

found it necessary to increase their floor space. They have, however, installed each year one or two important new machines including a larger planer, a larger boring mill, some improved grinders, etc., this to take care of refinements in manufacturing and to provide tools for larger work.

Dominion Bridge Company, Limited, Montreal, carried out large extensions to their various plants between the years 1926 and 1928, thereby adding materially to their fabricating capacity. At their Lachine plant additions comprised a 100 x 157-ft. extension to the machine shop; a 120 x 138-ft. extension to the main shop; a 150 x 60-ft. extension to the girder shop and an extensive addition to the main office building, adding 50 per cent to the available accommodation. In 1929 they built an entirely new fabricating shop in Calgary, consisting of a building 460 x 70 ft. and 35 x 80 ft., and a new plant in Vancouver, 210 ft. wide by 662 ft. long. At the same time the Toronto plant was extended, 225 x 67 ft. and 105 x 111 ft. The new plants at Calgary and Vancouver were equipped with modern tools for the fabrication of steel buildings and bridges. Other equipment has been replaced from time to time in their various plants.

Empire Brass Mfg. Co. Limited, London, report no new building, with the exception of a storage shed, but they have put in new machines and revamped others, speeding up production considerably.

Gray Forgings & Stampings Limited, Toronto, bought in 1928 1¼ acres of land on the C.P.R. right-of-way between Lansdowne and Royce Avenues and erected a plant on it at a total expenditure of \$63,000. They

have spent in the past ten years \$38,000 in additional equipment or replacing equipment.

Hinde & Dauch Paper Co. of Canada, Limited, Toronto, have gone in extensively for enlargements during the past ten years. Their Toronto mill was extended in 1928 by about 200,000 square feet and capacity on paperboards increased from 50 to 200 tons a day by the installation of a new board machine. At Trenton, Ont., they have built a paper mill at a cost of \$800,000 for the manufacture of corrugated and light weight chipboards. This mill, with capacity of 95 tons per day, was completed in 1927 and is the only paper mill in Canada producing corrugated straw-board from wheat and oat straw. They have doubled the capacity of their Montreal plant for the manufacture of corrugated and solid fibre shipping cases.

Horton Steel Works, Limited, Fort Erie, manufacturers of steel tanks, doubled the capacity of their fabricating plant in 1927 by increasing the size of the main shop building in order to take care of additional work and to keep up with the trend of the times. They have installed in the enlarged plant several modern machines to enable them to improve their work and speed up production.

A. B. Jardine & Company, Limited, Hespeler, manufacturers of blacksmiths', machinists', boilermakers' and pipe fitters' tools and garage equipment, state that while they have not rebuilt or extended their plant in the past ten years, they have made considerable changes in the disposition of equipment in order to adapt same to the new products which they have developed in that time. This in-