

CONTINUED FROM PAGE 16

released July 1989), and it worked out as we hoped it would.

How did you pick the name The Grapes of Wrath?

We were in Kelowna [interior of British Columbia], that is were we

were based, and we had organised our first show. So we had to come up with a name, because we wanted to print up posters and put them around town, not that it would have made a huge difference. So we didn't have a name, but I had this movie book, and we just went through it, writing down movie

titles, and that seemed like the best one.

What influences your lyrics?

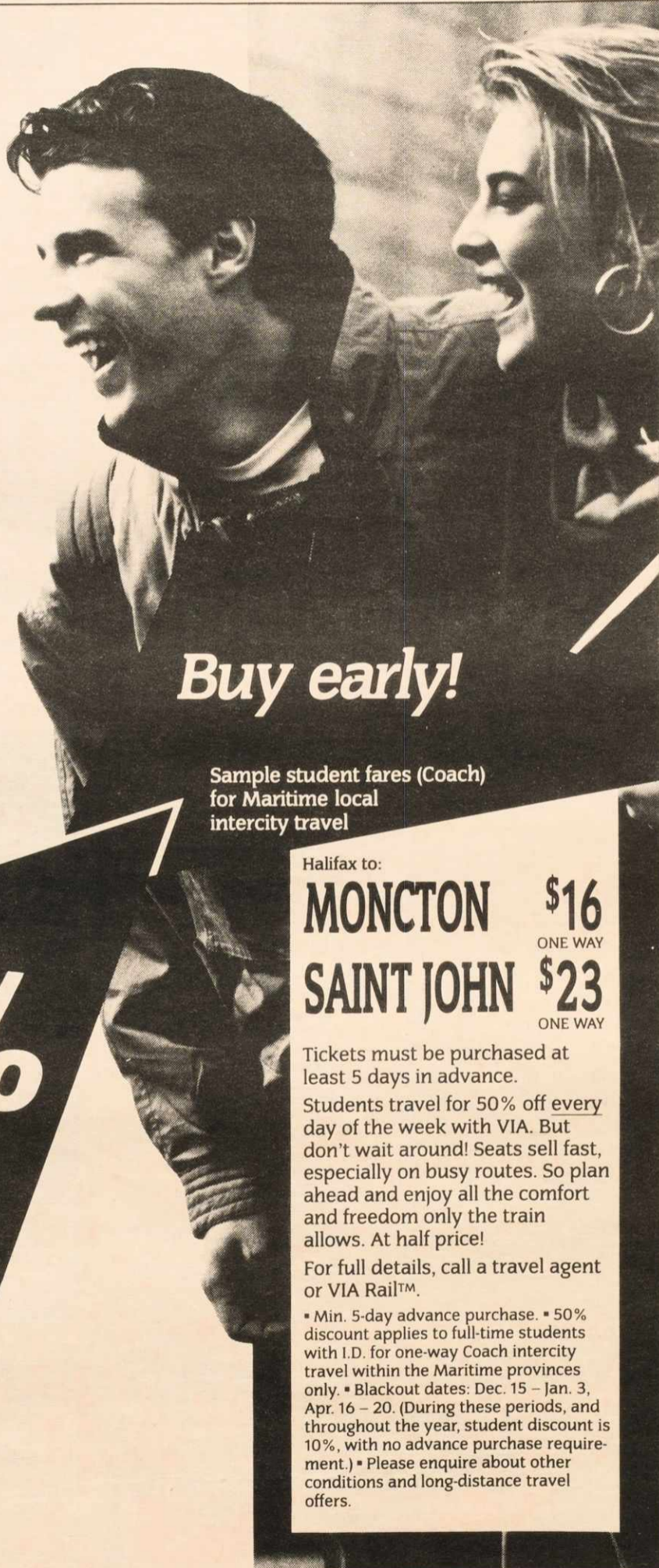
I think a lot of it comes from being on the road, it wasn't written on the road, but it was from coming back and sitting, then thinking of memories of the road. Like being in Spain and not being able to

make a phone call, because you just couldn't make it, or making a phone call, and it costing hundreds of dollars. So you remember these things and they come out in your lyrics.

The band played a good clean right set, performing songs from

their last three albums. The atmosphere in the McInnes Room was pretty mellow despite attempts by the band to get the young calm crowd moving. Kevin Kane and Tom Hooper invited the audience to sing along in such songs as Backward Town, but most attempts seemed to be in vain.

**Look
what
you save
when
you travel
by train!**



Buy early!

Sample student fares (Coach)
for Maritime local
intercity travel

Halifax to:	
MONCTON	\$16
	ONE WAY
SAINT JOHN	\$23
	ONE WAY

Tickets must be purchased at least 5 days in advance. Students travel for 50% off every day of the week with VIA. But don't wait around! Seats sell fast, especially on busy routes. So plan ahead and enjoy all the comfort and freedom only the train allows. At half price!

For full details, call a travel agent or VIA Rail™.

• Min. 5-day advance purchase. • 50% discount applies to full-time students with I.D. for one-way Coach intercity travel within the Maritime provinces only. • Blackout dates: Dec. 15 - Jan. 3, Apr. 16 - 20. (During these periods, and throughout the year, student discount is 10%, with no advance purchase requirement.) • Please enquire about other conditions and long-distance travel offers.

50%
7 DAYS A WEEK

TAKE A LOOK AT THE TRAIN TODAY



**DESPERATELY
SEEKING
PHOTOS...**

THE DALHOUSIE WOMEN'S GROUP AND DAL PHOTO ARE HOSTING A PHOTO EXHIBIT FOR THE WEEK OF REFLECTION.

WE'RE LOOKING FOR INTERESTING PHOTOS OF WOMEN FOR DISPLAY DURING THE WEEK.

**DEADLINE FOR SUBMISSIONS:
THURSDAY,
NOV. 7**

BRING SUBMISSIONS TO THE DAL PHOTO OFFICE
RM 320, SUB

FOR MORE INFO:
MARIA PATRIQUIN
494-2509