

The Canadian Entomologist.

VOL. X.

LONDON, ONT., JUNE, 1878.

No. 6

THE ACHEMON SPHINX—*Philampelus achemon* Drury.

BY THE EDITOR.

The Achemon Sphinx is not common in Ontario; occasionally, but rarely, we have found the larva both on the Grape-vine and Virginia Creeper (*Ampelopsis quinquefolia*), and once or twice captured the perfect insect.

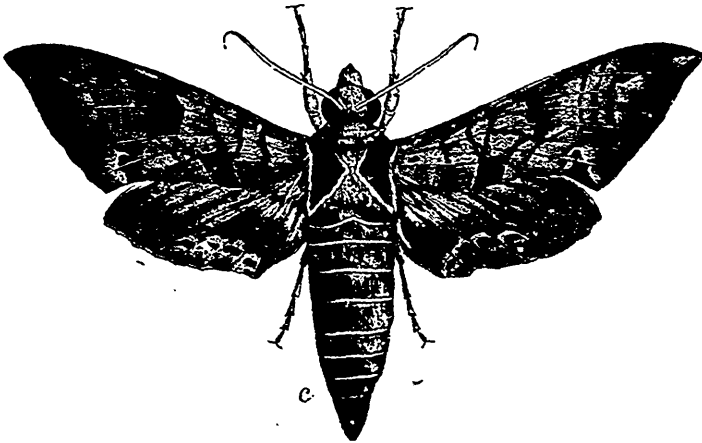


Fig. 4.

The moth (fig. 4) is a handsome one, and having the usual strong and rapid flight of the Sphinges, is not easily captured. It may be met with on the wing late in June, about dusk, hovering like a humming-bird over flowers and sipping their sweets through its long proboscis. Its color is brownish-gray, variegated with light brown, and with the dark spots