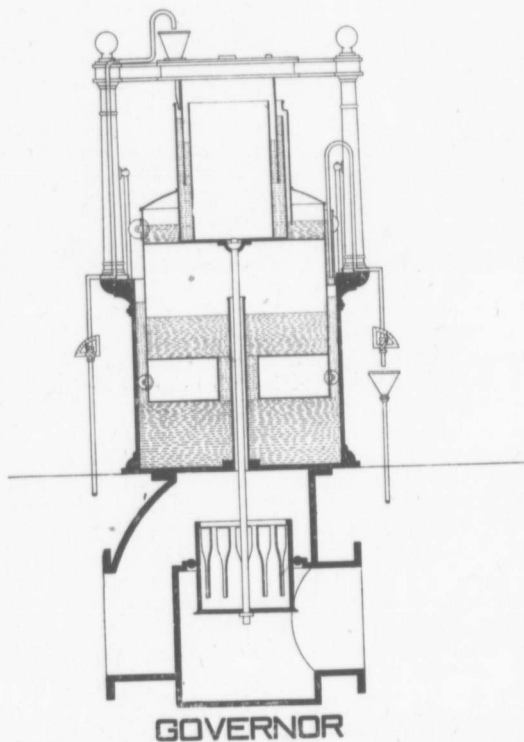


given in the day time, and twenty to thirty tenths as required during the first few hours of darkness.

Just a word now as to the distribution. This in a gas works of any size is a department quite apart from the manufacturing



plant, and is usually under the supervision of a qualified engineer conversant with main laying in all its branches. The fall and size of the mains have to be thought out, and a watch kept on leakage and renewals, besides the constant pumping