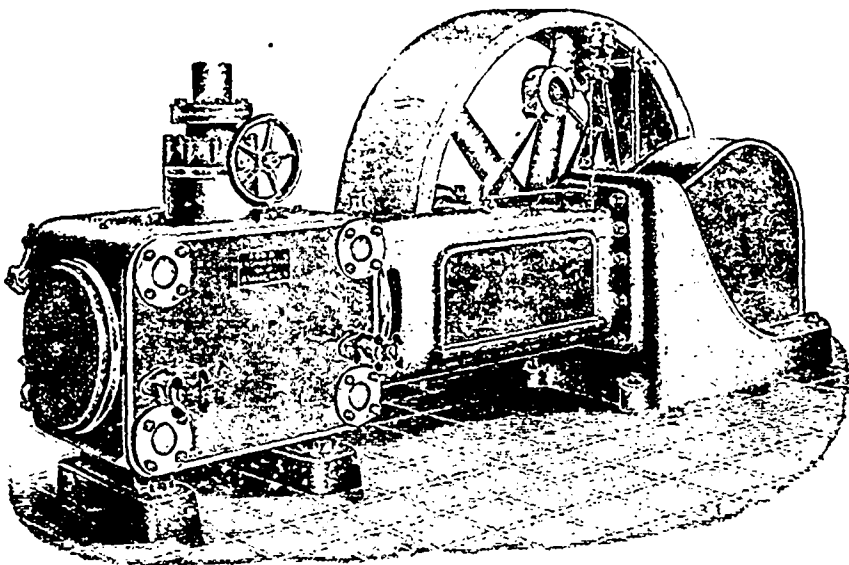


# OUR CORLISS ENGINES



Are fitted with Robb-Armstrong Corliss valve gear, which has the following good points:

**POSITIVELY DRIVEN  
ENCASED IN OIL  
RUNS NOISELESSLY  
MINIMUM FRICTION  
MINIMUM WEAR**

## ROBB ENGINEERING CO., Limited, AMHERST, N.S.

DISTRICT OFFICES } 320 Ossington Avenue, Toronto; Wm. McKay, Manager.  
} Bell Telephone Building, Montreal; Watson Jack, Manager.  
} 365 Carlton Street, Winnipeg; J. F. Porter, Manager.

### LEARN TO WRITE "ADS."

There is no more promising field to-day than that of advertisement writing. Many firms are looking for competent men. We offer exceptional opportunity to reliable, intelligent young men to learn this business—practical experience and expert training—with all expenses paid. Address Business Manager, CANADIAN MANUFACTURER, Toronto.



### DEEP WELL PUMPS

Steam Geared or Electrically Driven.

Deep Well Pumping Systems for Cities, Railroad, Mines, Factories, etc.

**DOWNIE PUMP CO., Downieville, Pa., U.S.A.**



OUR  
**"UNIVERSAL"**  
PORTABLE, RADIAL  
HAND-POWER  
MILLING MACHINE

For use in awkward and isolated places. Works in any position and at any angle.

SIX STANDARD SIZES  
FOUR SPECIAL DESIGNS

No. 1	drills up to	$\frac{1}{2}$ in diam.
No. 2	" "	$\frac{3}{4}$ "
No. 3	" "	1 "
No. 4	" "	1 $\frac{1}{4}$ "
No. 5	" "	1 $\frac{1}{2}$ "
No. 6	" "	1 $\frac{3}{4}$ "

ASK FOR CIRCULARS.

**W. B. McLEAN & CO.**

ENGINEERS AND MACHINERY MERCHANTS

301 St. James St., MONTREAL



**"Imperial"**  
Pneumatic Tools

**"MADE IN CANADA"**

DRILLS

CHIPPERS

RIVETERS

MOTOR HOISTS

### RAND AIR COMPRESSORS

Are reliable and effective and can always be depended on to do the work for which they are designed.

**Canadian Rand Company**

LIMITED

MONTREAL, QUE.

Toronto,

Halifax,

Monro,

Vancouver,

Roslin.

When writing to Advertisers kindly mention THE CANADIAN MANUFACTURER.