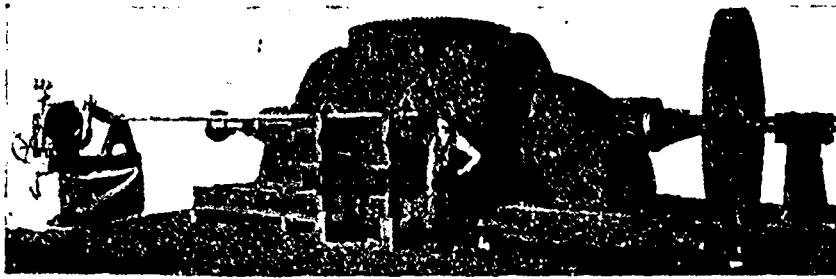


MCCORMICK TURBINES

State your Requirements and send for Catalogue



Estimates Furnished for Complete Power Plants, and Results Guaranteed

Represents a pair of 30-inch McCormick Turbines, with Governor and Fly-Wheel for regulating speed. The Turbine Shaft is direct-connected to a 750 k.w. Generator.

Four Outfits like this, developing 5,000 h.p., and one pair of 55 inch of 1,150 h.p., furnished the Sacramento Electric, Gas & Railway Co., Folsom, Cal. Power is transmitted 24 miles.

S. MORGAN SMITH CO.

YORK, PA., U.S.A.

TRUITT REGULATING LAMP AND SOCKET



Cheapest and most economical regulating lamp in existence. No coils to burn out, no key or switch required. With one lamp and socket four different candle-powers can be obtained - 1, 8, 16, or 24 c.p.

Write for Prices and Agents.

SOLE AGENTS FOR CANADA

NESS, McLAREN & BATE, 419 JAMES STREET - MONTREAL.

Tiny Lihtan Enclosed Arc Lamp

"The Greatest Competitor of the Incandescent Gas Lamp."

Cheap TO BUY TO OPERATE

FOR SALE BY . . .

- W. A. Johnston Electric Co., Toronto, Canada.
- H. B. Coho, 143 Liberty St., New York City.
- Sawyer Elec. Co., Sawyer Building, Philadelphia, Pa.
- Kingsmay, Samuel & Co., Baltimore, Md.
- Doubleday-Hill Elec. Co., Pittsburg, Pa.
- Los Angeles Elec. Co., Los Angeles, California.

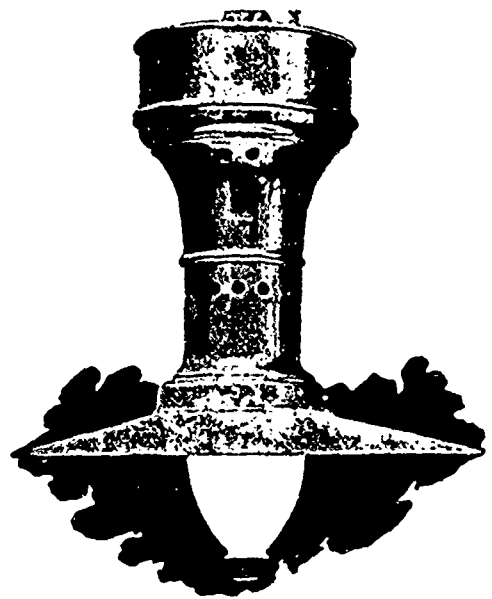
WRITE FOR PRICES AND CIRCULAR

Manufactured by . . .

THE SAFFORD ARC LAMP MFG. CO.

BUFFALO, N.Y.

18" LONG.



2 1/2 AMPERES. 110 VOLTS. 50 HOURS LIFE.



When a man sits down to think . . .

That's when we like to talk to him, for it takes but a moment to convince a thinking man of the many advantages of our

SELF OILING HIGH SPEED IDEAL ENGINE.

It is especially suited for Electrical Plants, using either belted drives or direct connection. Then the

WHEELLOCK SLOW SPEED ENGINE

is admirably adapted for Electric Lighting, Street Railway Plants and all Factory Services.

Write for Estimates of Steam Plant, Catalogue, etc.

The GOLDIE & McCULLOCH CO., Limited GALT, ONT.