

CONTRACTORS TO ADMIRALTY WAR OFFICE AND COLONIAL GOVERNMENTS

Allan, Whyte & Co.

CLYDE PATENT WIRE ROPE WORKS,
Rutherglen, Glasgow, Scotland

WIRE ROPES

For Mining, Engineering and Shipping: For Hoisting and Haulage in Collieries and Mines: For Cableways and Aerial Ropeways: For Dredgers and Steam Shovels: Specially Flexible Ropes for Winches and Fast Hoists, Coal Towers and Cranes.

OF THE HIGHEST QUALITY

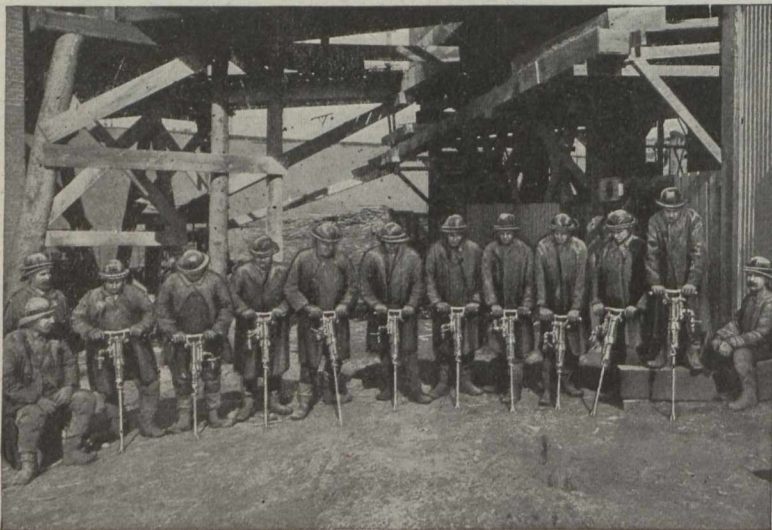
made from special grades of Wire drawn to our specifications and carefully tested before being used. They are at work in all parts of Canada from Vancouver to Halifax and are everywhere recognized as the best on the market. Complete stocks held in all parts. Orders executed and quotations furnished by:

Nova Scotia: Wm. Stairs, Son & Morrow, Ltd., Halifax. New Brunswick: W. H. Thorne & Co., Ltd., St. John.
Quebec, Ontario, Manitoba and Saskatchewan: Drummond McCall & Co., Montreal, Toronto and Winnipeg.
Alberta and British Columbia: McLennan, McFeely & Co., Ltd., Vancouver.

Highest Quality. Satisfaction in Use. Prompt Delivery. Keen Prices.

CABLES: "Ropery, Rutherglen." CODES: Western Union, A. B. C. (4th and 5th Editions), A. I., Liebers and Private.

SULLIVAN ROTATORS AT THE WOODBURY SHAFT.



At Ironwood, Michigan,

SULLIVAN ROTATORS were used in sinking the Woodbury Shaft of the Newport Mining Company, which has been advanced at an unusually rapid rate.

The shaft reached a depth of 2150 feet on Feb. 25, having been sunk at a rate of 181 ft. per month since Mar. 1, 1915; since August, the rock encountered has been granite.

An interesting feature of the equipment was the header, or "airship," used to supply air to the drills and to hoist them during shooting.

The picture shows ten SULLIVAN ROTATORS with the drilling crew, at the collar of the shaft. A description of the drilling methods and equipment in use was published in Mine and Quarry, No. 630. Ask for it!

SULLIVAN MACHINERY COMPANY

122 So. Michigan Ave. - Chicago

MONTREAL BOSTON COBALT NELSON SPOKANE VANCOUVER LONDON