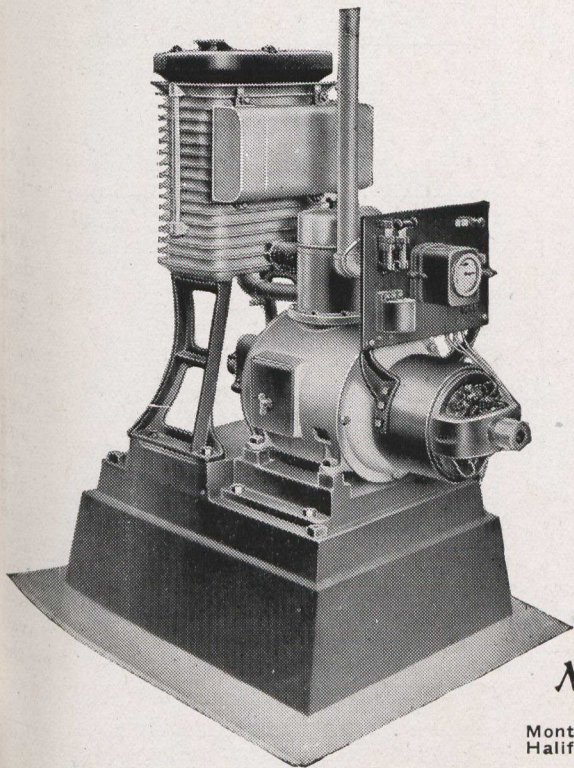


# Northern Electric

## POWER AND LIGHT



Electric Plants for Every Service  
350 to 5,000 watts.

Especially adapted to camps—saw-mills—  
construction work—stores—farms and all  
country houses.

This cut shows the Utility model  $\frac{3}{4}$  K.W.  
usually furnished with storage battery, but  
obtainable as a one-piece generating unit.

Its features include: Bosch Magneto—  
S.K.F. Ball Bearings—Electric Governor—  
and concealed Flywheel—it is self-cranking  
and stops itself when battery is charged.

*Northern Electric Company*  
LIMITED

Montreal  
Halifax

Toronto  
London

Regina  
Calgary

Edmonton  
Vancouver  
Winnipeg

## Foresters' Equipment

MOSQUITO AND INSECT PROOF TENTS  
WATER AND MILDEW PROOF BAGS  
FROST PROOF SLEEPING BAGS  
ALL "WOODS" QUALITY

## Woods Manufacturing Co.

DEPT. D.

OTTAWA