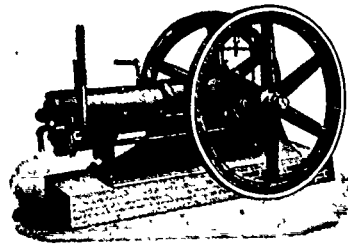
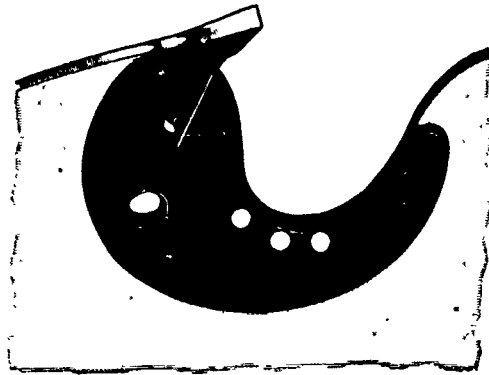
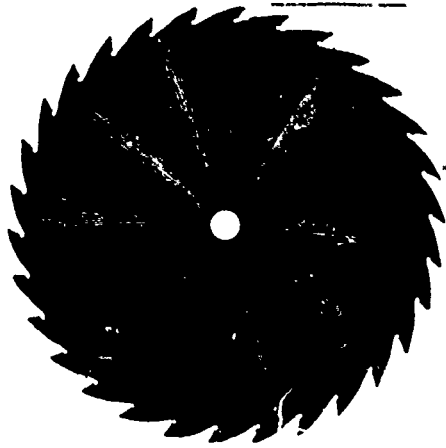


CHAMPION SAW & GAS ENGINE COMPANY

Solid and Inserted-Tooth Circular Saws, Gang, Drag and Cross-Cut Saws
GAS OR GASOLINE ENGINES



CHAMPION GAS ENGINES

Have no Superior.
Simple in Construction.
Symmetrical in Appearance.
Economical in Fuel.
Easily Operated.

Send for Circulars

Beaver Falls, Pa., U.S.A.

Saw Mills

Portable and Stationary

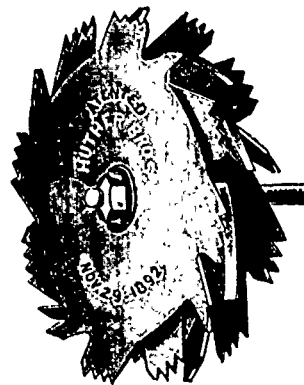
Mill Dogs, Edgers and Mill Supplies
High Grade Portable and
Stationary Engines and Boilers

SEND FOR CATALOGUES

The Robt. Bell Engine & Thresher Co., Limited
SEAFORTH, ONT., CAN.

HUTHER BROS. PATENT GROOVER OR DADO HEAD

For cutting any width groove from 1/4-inch to 2 inches or over



Can be used on any Circular Saw Mandrel.

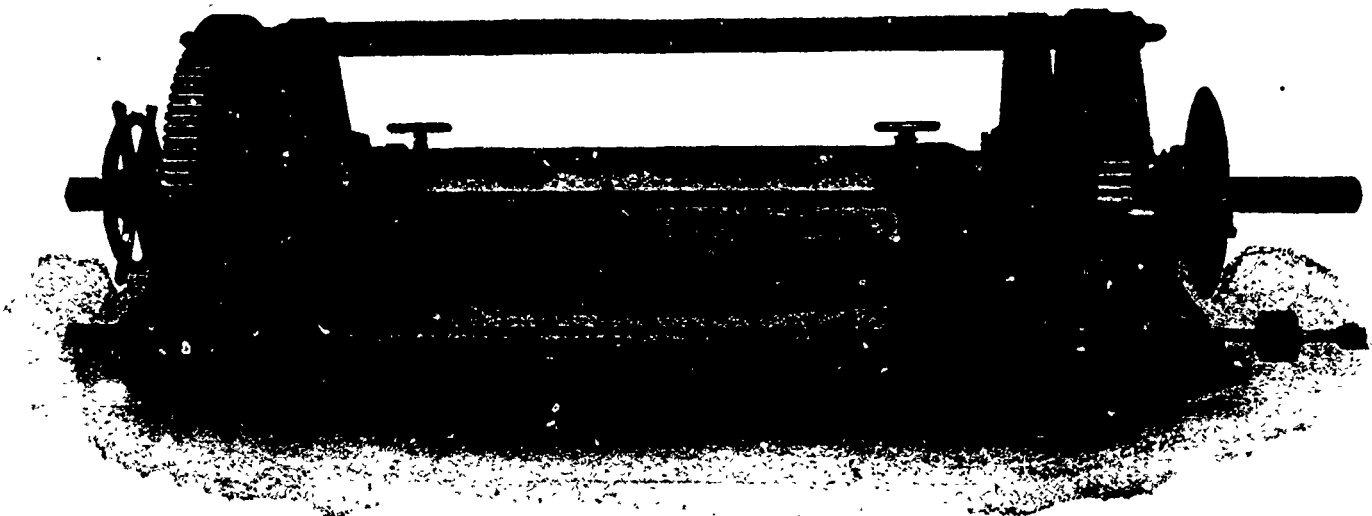
Will cut a perfect groove with or across the grain.

This is the only Dado Head on the market that gives entire satisfaction on all classes of work. No screw adjustment. For different width grooves, simply remove or add inside cutters. Sold by builders and dealers of woodworking machinery in all parts of the United States. Will send on approval, in competition with any other make on the market; if not the best return at our expense. HUTHER BROS., Platt Street, ROCHESTER, N.Y., manufacturers of Circular Saws, Morgan Pattern Lock-Corner Box Cutters, Concave Saws, etc.

Our Celebrated

Rotary Cutting Veneer Machines

made in over sixty sizes, have stood the test and proved equal to any proposition to reduce logs into thin lumber and veneers.



The product is high grade.
The output is great.
The cost of operating and maintenance is reduced to a minimum.
Quite a combination, is it not?

Timber and mill owners should get in early.
Buy a Coe Veneer Cutting and Drying outfit and prepare to supply thin lumber and veneers which have a healthy growing demand. More money in it than sawing your logs into lumber.

WRITE US.

THE COE MANUFACTURING COMPANY, Painesville, Ohio, U. S. A.

Established 1852.

Largest Builders of Veneer Cutting Machinery in the world.