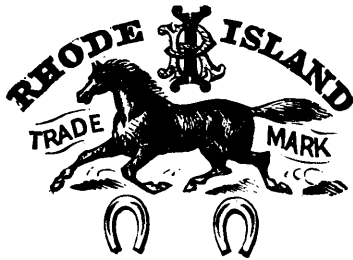


The Leading Manufacturers.



We are manufacturing above celebrated make of

**HORSE SHOES,**

made from selected **Wrought scrap Iron**, which for general excellence, both as regards quality and uniformity, are unsurpassed.

The **Rhode Island horse shoes** are preferred over all others. They are used entirely by the principal Farriers and Horse Railway Companies throughout the United States.

Orders solicited, which will be promptly executed.

We also manufacture every description of Nails, Tacks, Brads, &c. Railway and Pressed Spikes.

**PILLOW, HERSEY & CO., Montreal.**

Brown Brothers,

ACCOUNT-BOOK MANUFACTURERS

Stationers, Book-Binders, etc.,

66 and 68 King Street East, Toronto Ontario.

**ACCOUNT-BOOKS FOR BANKS, INSURANCE Companies, Merchants, etc.,** made to order of the best materials and for style, durability and cheapness unsurpassed.

A large stock of Account-Books and General Stationery constantly on hand. 3-ly

The Leading Manufacturers

**BARBER & HARRIS,**

Manufacturers of

**The Canadian Turbine**

GREATLY IMPROVED FOR THE TRADE OF 1877.

Warranted to give 80 per cent. of useful effect. The best practical Turbine in the market.

Also manufacturers of

**Improved Grist & Saw Mill Machinery**

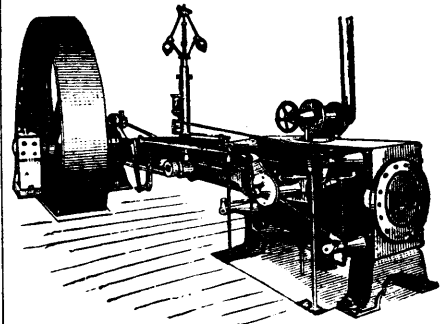
Cheap, light and effective.

High Pressure Steam Engines save 25 per cent in fuel by using our condensing heater and pump.

Send for particulars to

**BARBER & HARRIS,**  
MEAFORD, ONT.

The Leading Manufacturers.

**CORLISS ENGINE.**

For economy and mechanical construction, accessibility of all its parts, and regularity of speed. It has no rival. Send for catalogue. Manufactured by

**INGLES & HUNTER, Guelph.**

**CENTENNIAL MEDALS.**

ST. CATHARINES SAW WORK

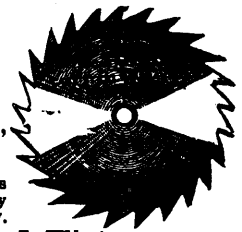
AWARDED THE

**ONLY GOLD MEDAL FOR SAWS AT PHILADELPHIA,**Also an **INTERNATIONAL MEDAL,**

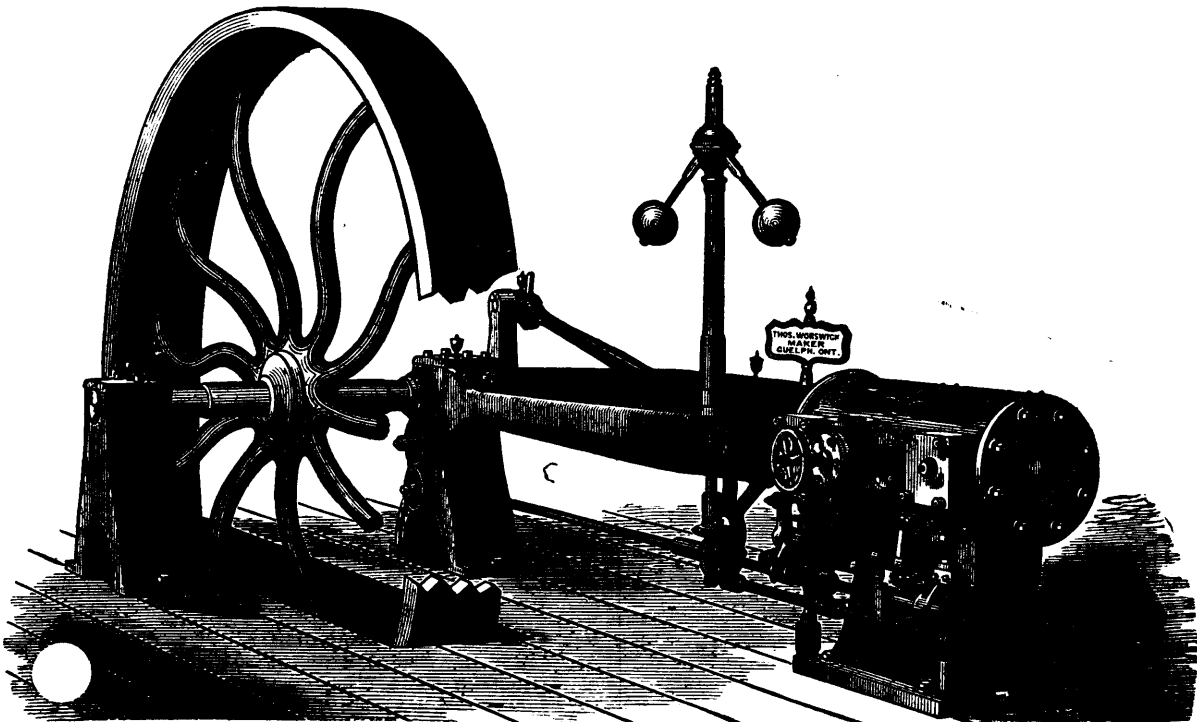
Fully establishing the well-known reputation of our goods. We manufacture all kinds of Saws at prices equally as low as the same quality of goods can be produced by any other manufacturer. Patronize home production, and keep your money in the country.

**R. H. SMITH & CO.,** Successors to J. Flint,

**St. Catharines, Ontario.**

**The Worswick Engine Company..(Limited)**

MANUFACTURERS OF  
**VARIABLE CUT-OFF ENGINES**  
Upright and Horizontal Slide Valve Engines,



*Machinists' Tools. Armstrong's Celebrated Heaters,  
WORSWICK'S PATENT FEED PUMP,  
Shafts, Pulleys, Hangers and General Machinery.*

**CAPITAL: \$100,000.00.**

The Worswick Variable Cut-off Engine will give one Horse Power per hour on three pounds of good soft coal. Without doubt, these Engines are the most economical on Fuel now made. Send for circular.

**THE WORSWICK ENGINE CO. GUELPH ONT.**