

A. B. C. & A. 1 Codes Used.

Telegraphic Address, Latch, Haymills

LATCH & BATCHELOR, L't'd.

AMALGAMATED WITH
WEBSTER & HORSFALL,

(ESTABLISHED 1730)

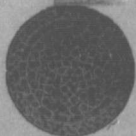
Works : **HAYMILLS, BIRMINGHAM, ENGLAND.**

AGENT: **H. M. WYLDE,** P O Box, 529 **HALIFAX N. S.**

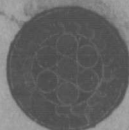
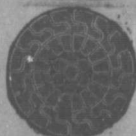
Patentees and Manufacturers of

Locked Coil and Flattened Strand WIRE ROPES.

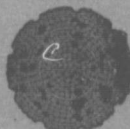
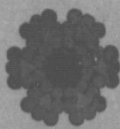
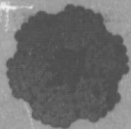
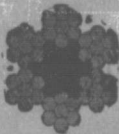
Manufacturers of all Kinds of WIRE ROPES for
**Mines, Tramways, Aerial Ropeways, Suspension
Bridges, Cranes, Elevators, Transmission of
Power, Steam Ploughing and General
Engineering Purposes.**



Locked Coil Winding Cable.



Locked Coil Aerial Cable or Colliery Guide.



Lang's Lay or ordinary Patent Flattened Strand Winding or Hauling. Patent Flattened Strand. (non spinning)

DRAWERS OF all Sections **STEEL-WIRE.**
HIGH CLASS

for Ropes, Springs, Pianos, Needles, Fish-Hooks

Binding, Armatures and all other Purposes.