

steam in marine power plants; marine superheaters.

Whiting Corporation. — The Whiting Foundry Equipment Co., of Harvey, Ill., and the American Foundry Equipment Co., of New York, N.Y., have been consolidated as Whiting Corporation, with authorized capital of \$5,000,000. J. H. Whiting, President, Whiting Foundry Equipment Co., becomes Chairman of the Board, and V. E. Minich, President, American Foundry Equipment Co., Sand Mixing Machine Co., and Foundry Equipment Manufacturers Association, becomes President. As the lines of manu-

facture of the component companies do not overlap, it is the intention to maintain all present manufacturing facilities. The Whiting plant at Harvey will retain the manufacture of cranes, cupolas, hoists, tumbling mills, core ovens and all other items of the Whiting line, together with sand blast equipment and dust arresters. Sand cutting machines, charging trucks, core machines and steel flasks will comprise the bulk of work at the new American Co.'s plant at 2935 West 47th St., Chicago, under the direction of E. A. Rich, Jr. Moulding machines, jolts, flask specialties and pattern

mounting materials will continue to be manufactured at the American Co.'s plant at York, Pa., in charge of R. S. Buch. The plans include maintaining and enlarging the present offices of the American Foundry Equipment Co., 366 Madison Ave., New York, as the eastern sales and export office of the combined lines.

Wilt Twist Drill Co. of Canada, Walkerville, Ont., has published an elaborate catalogue of drills, reamers, and cutters, giving descriptions of the different styles and types, with suggestions for their proper uses.

Taylor & Arnold Engineering Company, Ltd.

— AGENTS FOR —

Farnley Stay-Bolt Iron
Brown Bayleys Spring Steel
Armco Welding Wire
Manitoba Steel Foundries, Limited
Otis Steel Company, Etc.

Montreal Toronto Winnipeg

WALTER LAMBERT

Naval Architect, Marine Surveyor

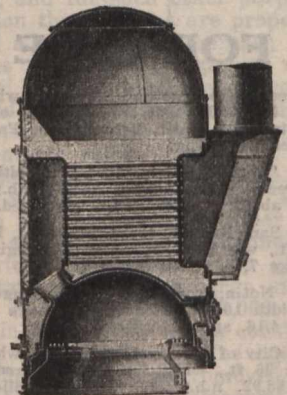
14 Place Royale Phone Main 4199 Montreal

Sole Canadian Agent for

Loveridge Marine Equipment.
Frameless Wooden Ship Construction.
Fleming & Ferguson, Ltd., Dredgers
Cochran Boilers.

FOR SALE — Twin Screw Steel Tug, 500 H.P., with Passenger Accommodation, \$100,000.

Single Screw Wood Tug, 200 H.P., \$17,000.



The Cochran Donkey
Boiler, Coal or
Oil Fired.